

BE
FIRE *wise*

Fire Safety Education Resource

for Years 7 and 8



BE
FIRE *wise*



Why should I teach my students to be FireWise?

Fire is a killer. Far too many lives are lost in New Zealand every year as a result of fires that could have been prevented. Fire and Emergency New Zealand is committed to significantly reducing the number of fires and their devastating consequences and needs your help to achieve this.

Young people are one of the most at risk groups, but may also be the key to reaching our goal. They can adapt their behaviour quickly and also influence their parents or caregivers to become more fire conscious – but only if they get the right advice and information.

This education resource provides information that can achieve this goal. It has been developed in consultation with teachers, students and fire safety experts. It is linked to the *New Zealand Curriculum: Draft for Consultation 2006*.

What is Be Fire Wise?

Be FireWise is a fire safety education resource for Years 7 and 8 that can be used as a context for teaching and learning or as a stand alone unit of work.

The resource:

- ▶ has been designed to be used flexibly, catering for a variety of interests and abilities, and is linked to the New Zealand curriculum.
- ▶ builds on the Year 1 and 2 Get FireWise programme that introduces younger students to essential fire safety messages and skills.

It will help students learn about:

- ▶ the nature and dangers of fire
- ▶ essential fire safety behaviour that could save lives in a fire emergency
- ▶ steps they can take to prevent fires from happening.

What's in this resource?

To support this **Be Firewise** programme there are resources for both teachers and students. The teachers resources includes unit plans, curriculum links, activities, fact and resource sheets and media clips. The students resources has interactive games, fact sheets, media clips and quizzes. These resources can be found at www.fireandemergency.nz/getfirewise

Before you use the resource

- ▶ Advise parents or caregivers that the class will be undertaking a fire safety education programme – a sample letter outlining the programme can be downloaded from the teachers' folder on the website. Encourage parents and caregivers to become involved in the programme.
- ▶ Arrange a visit from a local firefighter who is trained to support you in your teaching programme. You'll find details in the teachers' resource folder of how to contact your local fire station to arrange a visit. **Certain aspects of the programme must be covered by all students before the visit by the firefighter.**

- ▶ Remember that some students may have personal experiences of the effects of fire emergencies and may find the topic distressing.
- ▶ The film clips in the resource include images that some students may find disturbing, so we advise you to view them before your students watch them. You may wish to give an introduction and provide information about some of the clips to your students.
- ▶ The film clip of Belinda's Story contains some particularly graphic images and for this reason it is only included on the teachers' resource folder. Specific guidance on introducing this clip is given in the Learn section of the teachers' resource folder.
- ▶ Be aware that teaching a fire safety programme may identify students for whom fire has an unhealthy fascination. Fire and Emergency New Zealand operates confidential one-on-one counselling for children and adults who light fires. Information about this programme can be obtained by searching Fire Awareness and Intervention Programme at www.fireandemergency.nz

Using the resource

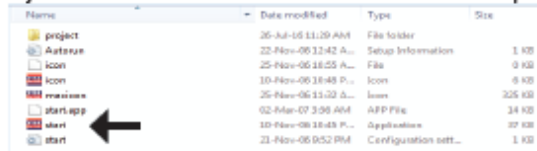
The resource has been designed to be used flexibly as a teacher directed units and lessons or for students to learn from independently. You can choose to have a combination of teacher directed and student led aspects to your programme of learning. Both the student and teachers' folders contain the key information on how to Be FireWise.

The materials in the teachers' resource folder can be downloaded and printed so that you can use them in your teaching and learning programmes.

Both folders can be loaded onto your school computers or intranet.

How to run the programme on a PC:

1. Visit www.fireandemergency.nz/getfirewise
2. Click on Year 7 and 8 - Be Firewise. The file will download for you.
3. Select either the **Student or Teacher folder**.
4. There are a range of files to click on, but you just need to click the **'Start'** file to run the programme.

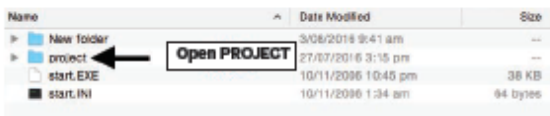


Name	Date modified	Type	Size
project	25-Jul-05 11:29 AM	File folder	
Autosave	22-Nov-06 12:42 A...	Setup Information	1 KB
icon	25-Nov-06 10:55 A...	File	0 KB
icon	10-Nov-06 10:48 P...	Icon	6 KB
maxicon	25-Nov-06 11:22 S...	Icon	325 KB
start.app	02-Mar-07 3:06 AM	APP File	14 KB
start	10-Nov-06 10:43 P...	Application	37 KB
start	21-Nov-06 05:2 PM	Configuration sett...	1 KB

How to run the programme on a Mac:

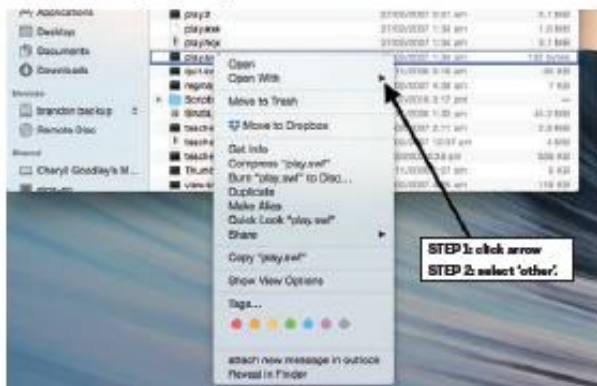
Running the programme on a Mac requires a few extra steps, as you will need to run the programme through the Google Chrome Browser. Below is a quick guide on how to do this.

1. Make sure you have the **Google Chrome browser** application on your computer
2. Visit www.fireandemergency.nz/getfirewise
3. Click on Year 7 and 8 - Be Firewise. The file will download for you.
4. Select either the **Student or Teacher folder**.
5. Open the folder titled **'project'**



Name	Date Modified	Size
New folder	3/08/2018 9:41 am	--
project	27/07/2016 3:15 pm	--
start.EXE	10/11/2006 10:45 pm	38 KB
start.INI	10/11/2006 1:34 am	64 bytes

- 4 In the project folder, right click the file '**play.swf**', select '**Open With**' from the dropdown menu that pops up, then **click 'Other'**



- 5 Select '**Google Chrome**' from the applications, ensuring you have selected '**All Applications**'



- 6 The programme should now start and display the below screen. **Click on the Item you would like to run.**



Note: Reference to CD-ROM in the programme

This programme used to be on CD-ROM so there are still references throughout the programme to CD-ROM, rather than the website links. We are in the process of updating this programme so apologies if this creates any confusion.

Acknowledgments

Fire and Emergency New Zealand would like to thank all the teachers, students, educationalists and firefighters who helped with the development of this resource, in particular:

Bay-Waikato fire region, Arapawa fire region, Blue Watch, Wellington Central Fire Station, National Rural Fire Authority.

Fire and Emergency New Zealand also gratefully acknowledges the support of Wormald in the delivery of the Be FireWise education programmes.

Be FireWise is a fire safety education resource for Years 7 and 8.

The resource contains resources for teachers, including unit plans, curriculum links, activities, fact and resource sheets and media clips. It also contains resources for students, with interactive games, fact sheets, media clips and quizzes.

**Enquiries about this resource and suggestions for improvements can be made to:
info@getfirewise.org.nz**



Educating NZ

Empowering Educators
He Whakamua o te Kaitiaki

Copyright © New Zealand Fire Service 2007

ISBN 1-877349-30-5

Produced by Educating NZ – Empowering Educators