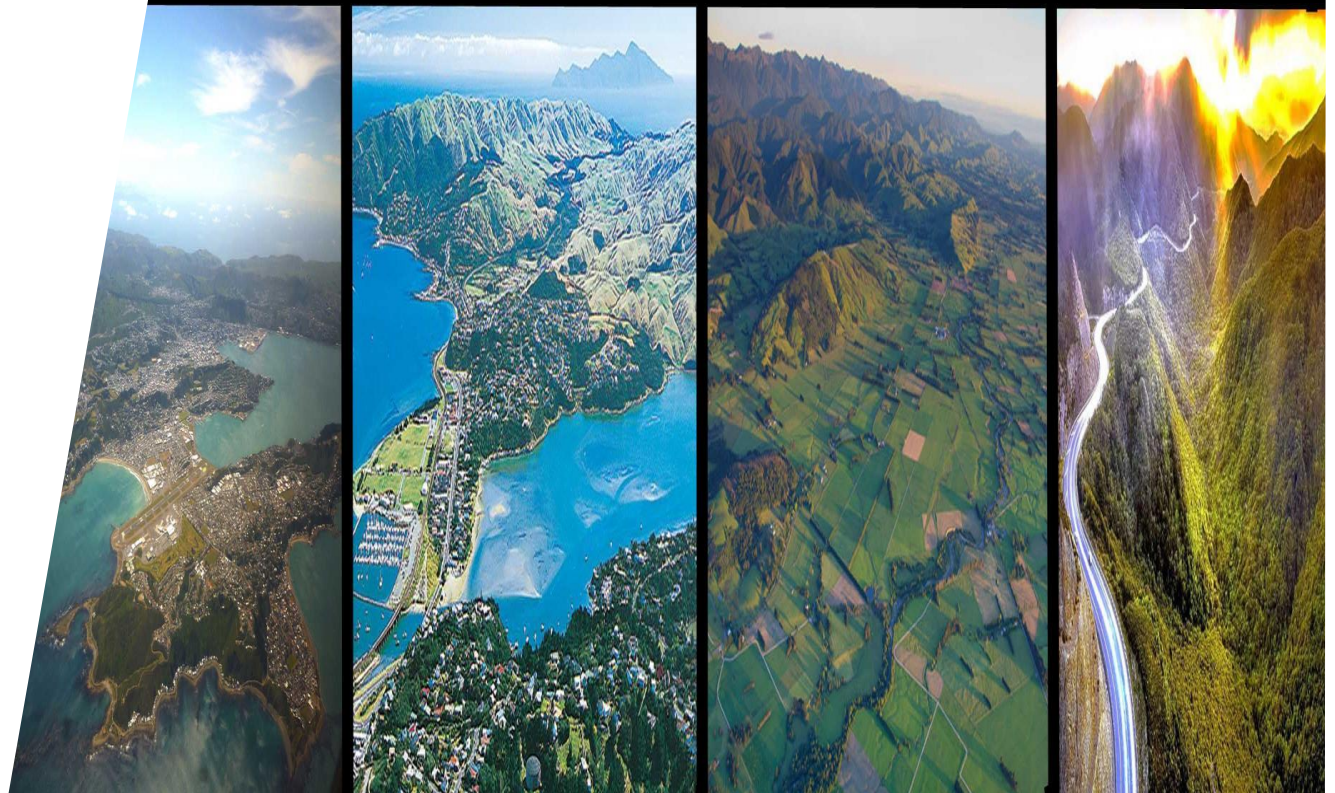


Fire Plan for Wellington

2024–2027



Document Title: Wellington [info type (subject)]

Published: 7 December 2023

Document review date: [published date + 3 years]

Status of this document

This document is issued by Fire and Emergency New Zealand.

Recommendations for change

The document, its content and specific processes are not to be altered except through Fire and Emergency New Zealand document management processes.

Requests or recommendations for changes to this material should be sent to [Content Owner].

© 19 July 2021 Fire and Emergency New Zealand

Contents

Introduction	1
How to use this document	1
Why do we have fire plans?	1
Content of the fire plans	1
Describe local fire risk conditions.....	1
Set out policy	1
Set out procedures	2
Take Fire and Emergency’s other requirements, agreements and policies into account.....	2
Cover the entire area	2
Set out Fire and Emergency’s fire control powers	2
Local area and zones	2
Local area	2
Zones	3
Consultation	3
Publish a notice	3
Consider submissions	3
Include a list of key stakeholders	3
Review and amendment.....	3
4 Rs of emergency management	4
Reduction	4
Readiness.....	5
Response	5
Recovery	5
Our commitment to working with Māori as tangata whenua	6
National Framework for Fire Control	6
Our policies.....	7
Fire risk conditions	7
Fire seasons	9
Open fire seasons	10
Restricted fire seasons	10
Prohibited fire seasons	10
Trigger thresholds for changing fire seasons	11
Prohibiting fires in open air (section 52)	11
Trigger thresholds for prohibiting fire in open air.....	12
Restricting and prohibiting activities (section 52)	12
Trigger thresholds for restricting or prohibiting activities under section 52	13
Activities and risk mitigation	13
Forestry operations	13
Powerline auto-reclosers	14
Hot works	14
Retail fireworks and pyrotechnics.....	14
Communicating changes in fire seasons and restrictions or prohibitions	15

Fire permits	16
Council by-laws, regional plans, legal covenants, or restrictions.....	16
When a permit is needed	16
Fire types	16
Authorised fire types, descriptions and conditions in a restricted fire season.....	17
Authorised fire types on public conservation land in a restricted fire season.....	20
Authorised fire types, descriptions and conditions in a prohibited fire season	22
Authorised fire types on public conservation land in a prohibited fire season	24
Permits in prohibited fire seasons or during prohibitions under section 52	24
Applying for a permit.....	24
Assessment.....	25
Mandatory conditions	25
Firebreaks	26
Fire hazard removal	27
Reporting fire hazards	27
Assessment of fire hazards.....	27
Initial review	27
Risk assessment matrix	28
Outcomes from the fire hazard assessment	29
Powers of entry	29
Fire hazard removal notice (section 65).....	30
Imminent danger notice (section 68).....	30
Regulatory compliance	30
Fire and Emergency's role	30
Contact Fire and Emergency.....	31
General enquiries and questions.....	31
Lodge a complaint	31
Fire hazards	31
Local contacts for this plan	31
Glossary	32
Wellington District Information	34
Area overview	35
Schedule of stakeholders	39
National-level stakeholders.....	39
Area-level and zone-level stakeholders	41
Zone information for the Wellington District	44
Wellington Province	44
Wairarapa Province	53
Thresholds	58
Zone Map.....	63
Public conservation land – [national parks etc]	64
Thresholds	64
Zone Map.....	66
NZ Defence Force	67
Scheduled Defence Areas.....	67

Document drafting information

Owner	Region Manager, Te Ūpoko
Steward	District Manager, Wellington District
Last reviewed	20231/01/2023
Review period	Every second year

Record of amendments

Version	Date	Author	Brief description of amendment
V0.1		Senior Risk Reduction Advisor	Zone Changes to suit districts weather varieties.
V0.2		Senior Risk Reduction Advisor	Trigger point changes to suite new zones

Approval

Full Name: Bruce Stubbs

Title: Region Manager, Te Ūpoko

Date:

Signature

Add another block of other signatures as required

Introduction

How to use this document

The front sections of this document cover:

- general information about fire plans
- the basics of Fire and Emergency New Zealand's fire control powers
- how we use these powers to reduce the risk of unwanted fires, particularly in the open air.

The back section, [<Local area> information](#), is for specific local information about this fire plan area. Fire plans must take the local fire risk conditions into account and not just apply a blanket standard across the country. All of our areas have different levels of risk, so what may be appropriate for one area of the country may not apply somewhere else.

Why do we have fire plans?

Fire plans are required by [section 22](#) of the [Fire and Emergency New Zealand Act 2017](#) (the Act) and the [Fire and Emergency New Zealand \(Fire Plans\) Regulations 2018](#).

According to [Regulation 5](#) of the Regulations, the purpose of a fire plan is to:

- provide transparency and predictability in relation to the use of Fire and Emergency's fire control powers under sections [52 to 58](#) and [62 to 68](#) of the [Fire and Emergency New Zealand Act 2017](#) in each local area; and
- ensure that the particular fire risk conditions in each local area are considered by Fire and Emergency when it establishes policies and procedures for, and exercises fire control powers within, that local area.

This means that we need to explain how we:

- set locally appropriate triggers for changing fire seasons for outdoor fires to:
 - require permits
 - prohibit fires
 - restrict activities that may cause unwanted fires
- apply our other powers to manage fire hazards or require firebreaks.

These explanations help people to understand what to expect, how to plan for this and what they need to do to comply with any requirements.

Content of the fire plans

Fire plans must do the following.

Describe local fire risk conditions

A fire plan must describe the particular fire risk conditions that exist or are likely to exist in the local area. This means that each fire plan:

- is accurate and relevant for its area
- can be broken down into specific zones within the area where fire risk conditions or control measures differ.

Set out policy

A fire plan must set out the policy for fire control in the local area. It must specify when and why we:

- restrict or prohibit fires in the outdoors
- restrict activities that may cause unwanted fires
- manage fire hazards
- require firebreaks.

Set out procedures

A fire plan must set out fire control procedures for the local area. These include:

- details of the processes that Fire and Emergency will follow
- factors that Fire and Emergency will consider when deciding to:
 - issue notices of prohibitions or restrictions for fire control under [section 52](#) of the Act
 - declare a prohibited or restricted fire season in relation to the local area, or a part of that area, under [section 56](#) of the Act
 - issue notices in relation to firebreaks under [section 62](#) of the Act
 - issue notices to remove or destroy vegetation or other things on land under [section 65](#) of the Act.

This means that our communities understand how we have come to those decisions, and that we can show that they are evidence-based decisions that don't impact on recreational and economic activities unnecessarily.

Take Fire and Emergency's other requirements, agreements and policies into account

A fire plan must be consistent with:

- Fire and Emergency's national strategy
- any local planning by Fire and Emergency for the local area
- any current operational service agreement and memorandum of understanding that Fire and Emergency has with other agencies or people relevant to the local area
- any relevant Fire and Emergency policies. The first part of this template highlights policies that impact our regulatory role, However, fire plans must comply with other Fire and Emergency internal policies, such as records management.

Cover the entire area

A fire plan must cover the entire local area that it relates to, but we can break each area down into smaller zones to manage them individually. This ensures that each fire plan is relevant to everywhere within its area.

Set out Fire and Emergency's fire control powers

Fire plans are not about how we fight fires in the local area, or the resources available to do so. This plan is about how, when and why Fire and Emergency will exercise its fire control powers to reduce the incidence of unwanted fires in the area.

Local area and zones

Local area

In these fire plans, local area is the area within each Local Advisory Committee's (LAC's) boundaries.

The Fire and Emergency New Zealand (Fire Plans) Regulations 2018 indicate that Fire and Emergency must prepare and issue a fire plan for each local area as soon as possible after the boundaries of the LAC for the local area are set.

In May 2019, the Board of Fire and Emergency New Zealand approved LAC boundaries aligned with the Civil Defence Emergency Management Group (CDEMG) boundaries as originally proposed and publicly consulted. There was one modification in the Hawke's Bay LAC area to include the Tararua District.

Zones

When dividing a local area into zones, we consider factors such as climatic conditions, geographical features, land use or territorial authority.

We also look at previous analyses of the wildfire threat.

Applying fire seasons to zones

When we apply fire seasons to a zone, we consider:

- whether they season make sense from a fire science point of view
- how we can communicate to the public where the boundaries are.

Consultation

Before issuing a fire plan for a local area, or an amended fire plan, Fire and Emergency must do the following:

Publish a notice

The notice should:

- outline the proposed plan
- say where you can see and read a copy of the plan
- say how you can make a submission on the plan and where to send your submissions
- give the closing date and time for submissions.

It must be published in the Gazette, or in a newspaper circulating in the local area, or a website.

Consider submissions

Fire and Emergency New Zealand must consider every submission received by the closing date and time for submissions.

Include a list of key stakeholders

A fire plan should include a list of key stakeholders in the local area and zone information. Stakeholders include those who:

- were involved in creating the plan
- should contribute to maintaining it and making relevant decisions.

Record stakeholder engagement

Fire and Emergency will record stakeholder engagement and their inputs in the stakeholder engagement plan for the fire plan.

Review and amendment

Fire and Emergency may amend a fire plan at any time.

However, we must review the fire plan for each local area at least once every 3 years, or if there are significant changes to the boundaries of the local area.

When we review the fire plan for a local area, we must either:

- confirm that the fire plan is still appropriate for that area
- amend the fire plan as necessary and consult on changes.

4 Rs of emergency management

The '4 Rs' sum up New Zealand's approach to emergency management – reduction, readiness, response and recovery.

Fire plans are a part of reduction space. Previous fire plans issued under the old rural fire authorities also included readiness and response. We now put that information in our other planning work and operational procedures.

The next sections outline the work Fire and Emergency does in each of the 4 Rs.



Reduction

Reduction means:

- identifying and analysing long-term risks to human life and property
- taking steps to eliminate these risks if practicable
- if not, reducing their impact and the likelihood of them occurring.

The first of Fire and Emergency's principal objectives is to reduce unwanted fires.

For Fire and Emergency, this work includes

- our National framework for fire control. This framework includes:
 - these fire plans
 - our fire control powers for reducing the likelihood of unwanted fire from the use of fire in the open air
 - our fire control powers for reducing the likelihood of other causes of wildfire by setting fire seasons, requiring fire permits, firebreaks and fire hazard removal

- evacuation procedures and evacuation schemes for buildings
- input into building design for fire safety, and our part in the building consent application process
- the national automatic fire alarm system
- influencing policies within standard-setting bodies and with central and local government
- public education campaigns around escape planning, fire safety, and smoke alarms.

Readiness

Readiness means developing operational systems and capabilities before an emergency occurs. These include self-help initiatives for the public, specific programmes for emergency services, lifeline utilities and other services.

For Fire and Emergency, this includes:

- establishing and maintaining our response capability (our fire stations and trained people) across the country
- the 111 call centre where the public can report fires and other emergencies
- contact lists and contracts with service providers that we can use in response
- tactical plans (how we plan to respond to a particular site or location)
- community planning
- work with local government around provision of water for firefighting

Response

Response means:

- attending incidents
- taking any actions from the time our communications centres are notified until to the incident controller moves the incident to recovery phase.

For Fire and Emergency, this includes:

- firefighting
- responding to hazardous substance incidents
- rescuing trapped people
- urban search and rescue.

It can also include responding to:

- medical emergencies
- maritime incidents
- other rescues
- weather events and disasters
- incidents where substances present a risk to people, property or the environment
- any other situation where we can assist.

Note: This fire plan is not a response-related plan.

Recovery

Recovery means helping people who have suffered loss and trauma to receive the appropriate support. It involves coordinated efforts and processes to bring about the immediate, medium-term and long-term recovery of a community following a major emergency.

For Fire and Emergency, this includes:

- during our immediate actions at emergencies, following good incident management practices that minimise the short-term and long-term impact and consequences of the original event
- helping those immediately affected by the emergency get the support they need, including making sure people suffering loss and trauma receive appropriate support from the relevant agency.

In addition, as a precursor to recovery, we:

- support and encourage communities to pre-plan for major events
- support recovery/clean-up activities to strengthen community resilience following an incident.

Our commitment to working with Māori as tangata whenua

Fire and Emergency recognises the status of Māori as tangata whenua and, as such, the importance of Māori communities as key stakeholders in Fire and Emergency's work.

We recognise:

- iwi and Māori as community leaders with an important role to play in preventing fires and other emergencies, building community resilience, and informing emergency response
- iwi as our partners in risk reduction as significant and growing land and forest owners
- Māori are disproportionately affected by unwanted fires, and that needs to change.

By committing to working with tangata whenua, we contribute to a safer environment not only for Māori but for all New Zealand communities.

We will do this by building strong relationships that enable us to engage with iwi and Māori as we design and deliver services. This will require us to engage in culturally appropriate ways. We will strengthen our cultural capability, diversity and inclusion, so that we better reflect and engage with the communities we serve.

National Framework for Fire Control

Not all fires are unwanted. New Zealand has a long history of using fire as a tool, for land management, cooking, recreation, comfort, and warmth.

The National Framework for Fire Control consists of policies, procedures and tools that enable Fire and Emergency to manage fires. The framework supports people to use fire safely where appropriate and restricts or prohibits its use when there is a risk of unwanted fire.

The public face of the framework is:

- the [Checkitsalright.nz](https://www.checkitsalright.nz) website
- the [fire permit application system](#)
- these fire plans
- additional information on our public website – [fireandemergency.nz](https://www.fireandemergency.nz).

Fire and Emergency can apply a number of statutory fire control powers to reduce risk:

- Setting fire seasons
- Prohibiting fire in open air or revoking the prohibition
- Prohibiting or restricting activities or revoking the prohibition or restriction
- Fire permitting
- Control of firebreaks

- Fire hazard removal

Our policies

This table sets out the current internal policies and supporting processes that guide our decisions and actions.

Policy	Detail
Fire seasons, prohibitions and restrictions policy	Relates to sections 52 to 58 of the Act and decisions to: <ul style="list-style-type: none"> declare or revoke a prohibited or restricted fire season prohibit fire in open air or revoke a prohibition prohibit or restrict activities that may cause a fire to start or spread and revoke prohibition or restriction.
Fire permitting policy	Supports the policy above and defines actions for: <ul style="list-style-type: none"> supporting a member of the public who is applying for a fire permit assessing a fire permit application granting or renewing a fire permit refusing to grant or renew a fire permit suspending or cancelling a fire permit operational decisions when responding to an alarm of fire in open air.
Fire hazard removal policy	Relates to sections 65 to 68 of the Act and decisions about what to do when: <ul style="list-style-type: none"> a potential fire hazard is reported to Fire and Emergency we assess a potential fire hazard we arrange for the removal or destruction of a confirmed fire hazard.
Regulatory compliance policy	Covers how we monitor and take action to identify and influence landowners and others to comply with the requirements of the Act and other relevant legislation. This covers activities which: <ul style="list-style-type: none"> reduce harm from unwanted fire support the safe use of fire as a land management tool and reduce harm if fire escapes control minimise avoidance of the Fire Emergency levy reduce non-compliance with any legislation or regulations under which Fire and Emergency New Zealand has a compliance function.
Firebreaks policy	Relates to sections 62 to 64 of the Act to support decisions and actions relating to requirements for landholders to: <ul style="list-style-type: none"> make and clear any firebreak on the landholder's land remove any vegetation or other thing from an existing firebreak.

Fire risk conditions

The Act defines the circumstances where we can use our fire control powers to prohibit fire and or restrict other activities as when:

- fire risk conditions exist or are likely to exist in the area; and
- the prohibition or restriction is necessary or desirable for fire control.

We also take these into account when setting fire seasons.

The Act defines fire risk conditions as weather or other conditions that will, or are likely to, endanger persons or property by increasing the risk of the outbreak or spreading of fire.

Decision-makers must be satisfied that:

- fire risk conditions, and potential ignition sources exist, or are likely to exist in the area
- these will endanger people or property by increasing the risk of outbreak or spread of fire.

They make decisions based on evidence, not for the convenience of Fire and Emergency.

This table sets out other conditions we consider to be fire risk conditions for the purposes of exercising our fire control powers.

Condition	Description
Fire weather science	The NZ Fire Danger Rating System includes measures such as: Build-up Index (BUI) Initial Spread Index (ISI) Fire Weather Index (FWI) Grass curing percentage Fine Fuel Moisture Code (FFMC) Drought code (DC).
Topography	Factors that influence how a fire spreads, including: steepness of slope direction fire is facing, i.e. aspect terrain features, e.g. gullies and chimneys.
Fuel behaviour models	The characteristics of fuel, or vegetation, that contribute to fire ignition and spread.
History of fires	History of recent fires and their ignition sources in the area, based on available fire data.
Socio-economic factors	Factors that influence the likelihood of fires being lit for cooking purposes and to dispose of rubbish in backyards, e.g. absentee owners and lifestyle blocks burning during holiday season. Expectations of the public to be able to light certain types of fires, e.g. cultural cooking fires.
Time of year	Time of year, e.g. land clearing forestry, land clearing hill and high country, late winter to spring.
Public knowledge – awareness of the risks	The expected public awareness of risks may be low, e.g. a large influx of visitors during summer holiday periods who may reasonably be expected to have little understanding of the risks of lighting fires in an area.
Proximity to property or other values	The closeness of property or other valuables to fire, for example: life values, e.g. size of land parcels in an urban area distance from commercial forestry.
Ability to respond effectively	Factors that contribute to our ability to respond to an out of control fire include: availability of response resources, i.e. people and equipment isolation accessibility issues availability of water supplies.

Condition	Description
Impacts from natural hazards	Natural hazards impacts are likely to influence resource availability and the likelihood of fires.
People	The presence of people increases the risk of fire.
Impact of other events that increase the risk of the outbreak or spread of fire	Events that increase the risk of potential fire, e.g. the rupture of an oil pipeline.

Fire seasons

Fire seasons are used to:

- inform people about the requirements for or restrictions on lighting fires in the open air
- manage the use of fire to protect communities from the consequences of unwanted fire.

There may be other legal requirements and regulatory approvals needed for a fire under other legislation, such as the [Resource Management Act 1991](#), or Council by-laws. It is your responsibility to comply with all other legislation and get all other necessary approvals.

Fire and Emergency can declare or revoke a prohibited or restricted fire season in an area. We use our fire seasons, prohibitions and restrictions policy and associated processes to manage this.

Fire seasons are applied to geographic zones based on:

- the fire environment (fuel types, fuel condition (curing/dryness), weather, topography, historic trends)
- fire climatic zones
- topographical boundaries/features (rivers, roads, coastlines, forest and national park boundaries)
- fire control considerations.

There are three types of fire season is in force at any time in an area or zone:

Open fire season



Open fire seasons are for periods when conditions enable people to safely use fire and manage the risks themselves. There is still a requirement to not cause or allow a fire to get out of control or leave a fire smouldering in a way that increases the likelihood of harm or damage arising from the start or spread of fire.

Restricted fire season



Lighting a fire is riskier than usual and you must get a fire permit. This permit may also have specific conditions to make sure you can light a fire safely and it will remain under control.

Prohibited fire season



Lighting fires in the open air is not permitted. Existing fire permits are suspended, though fire permits may still be granted in exceptional circumstances.

It is important that stakeholders know what the current fire season is and understand how they can comply with the requirements.

To see what the current fire season is within a local area (or zone within an area) go to checkitsalright.nz.

Open fire seasons

We use an open fire season when the fire danger is consistently low enough that Fire and Emergency does not need to apply additional controls on when people can light fires in the open air. To help you to use fire safely, we have a set of guidelines for fire types that you should follow even when there are no restrictions or prohibitions in place, see the [Authorised fire types, descriptions and conditions table](#) below for guidance.

Note that this does not mean that you can light fires anywhere you want to. You should still check the conditions at checkitsalright.nz and follow any advice provided.

Those lighting a fire have a duty of care to ensure that fire remains under control and is fully extinguished once complete. [Section 60 \(1\)](#) of the Act requires this: 'A person must not cause or allow a fire to get out of control and to spread to vegetation or property.'

Other legislation or regulatory requirements, such as local council or regional council by-laws or air quality plans, may apply additional restrictions, or not allow you to light a fire at all.

You must also have permission from the landowner or occupier to light a fire, even in an open fire season.

We still like to hear from you if you are lighting a large fire, e.g. for land management, so that we can share advice on how and when to light and use your fire safely. Go to our Fire Permit website firepermit.nz. Select **Lighting a fire in an open season** and complete the address info or use the map. Once the address information updates and confirms an Open fire season, select the **Notify Us of your fire** button at the bottom of the screen and complete the form.

This also helps us manage notifications about your fire that might be made by members of the public.

Restricted fire seasons

We use restricted fire seasons when the fire danger has increased enough that we need more control over where, when and how people use fire.

Requiring permits for particular types of fires in the open air lets us know where and when fire is being used. This means our fire brigades don't need to respond unnecessarily.

It also gives us an opportunity to advise how to light and use the fire safely. We can also apply conditions about when the fire can be lit, how big it can be, or any other requirements that reduce the chance of the fire escaping control. Go to firepermit.nz to check and apply

Note: When you get a permit, you must read and follow the conditions of that permit.

Prohibited fire seasons

When the fire danger reaches higher levels, we need to stop people from lighting fires that may escape. Fire behaviour during these conditions makes fires very difficult and dangerous to contain, control and extinguish.

Certain types of fires may still be used, but people need to be very careful with fire during these times. See the section on [Authorised fire types in a prohibited fire season](#).

Trigger thresholds for changing fire seasons

The New Zealand Fire Danger Rating System and its component Fire Weather System are a consistent, scientific way to monitor the fire danger in an area.

Trigger thresholds are based on relevant fire weather measurements and values. They are set in consultation with stakeholders for declaring restricted and prohibited fire seasons within the fire plan area or fire season zone within that area. The trigger thresholds identify when prevailing weather conditions create ongoing potential for problem fires.

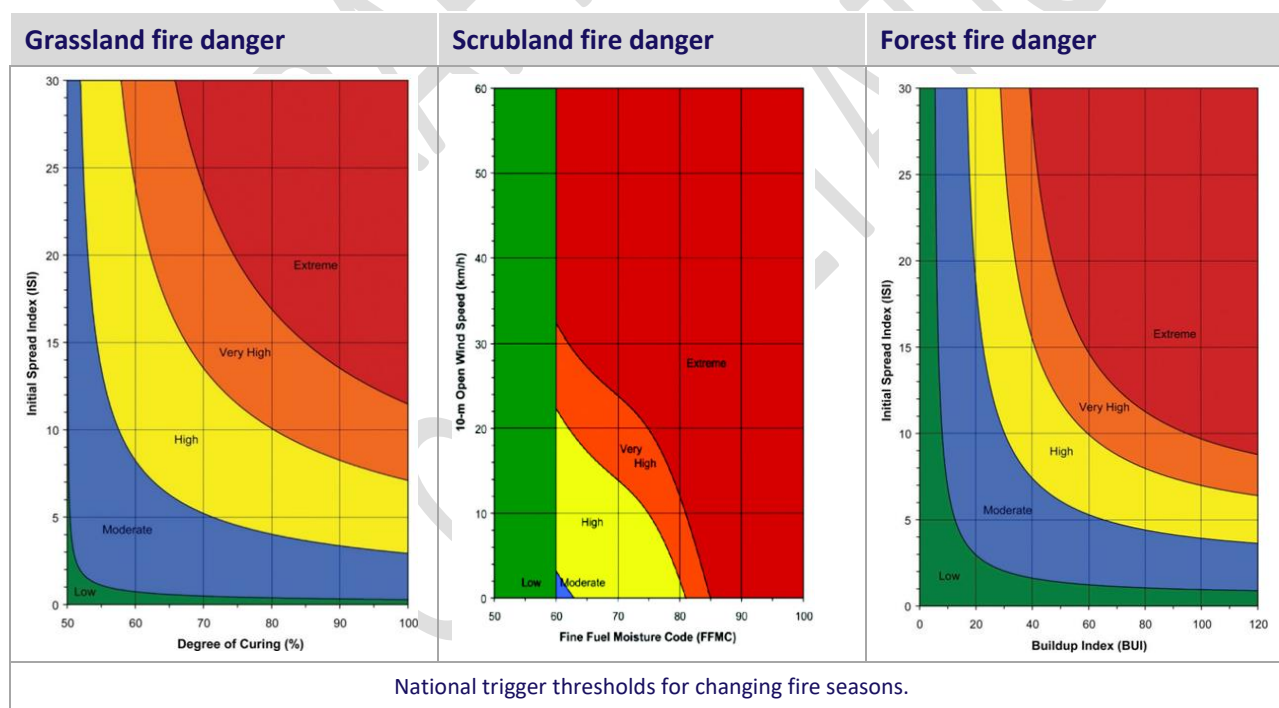
The trigger thresholds use:

- the Remote Automatic Weather Station (RAWS) climatology data for the fire plan area or zone.
- historical fire data for the fire plan area or zone.

Other factors, such as resource availability or other emergency events, may also influence a decision to declare or revoke a fire season earlier or later than the trigger threshold would indicate.

Forecast weather trends must be taken into consideration when declaring a change in fire season. An upcoming rain event may defer a change in fire season or forecast dry weather. Strong winds may indicate a need to change fire season days before the trigger threshold would otherwise be reached.

Locally agreed thresholds will be listed in the zone information in this document.



Prohibiting fires in open air (section 52)

Fire and Emergency may sometimes need to prohibit fires in the open air outside the usual fire season changes. We only use this control very rarely, in exceptional circumstances – for example:

- during large or multiple incidents that put firefighting resources under strain
- when extreme fire weather conditions occur during a restricted fire season, e.g. strong dry winds, high temperatures associated with very low humidity

- when emergency events occur, e.g. a rupture of the Marsden Point fuel pipeline, increasing the fire hazard in a specific area.

We can only prohibit fires in the open air when fire risk conditions exist or are likely to exist that indicate that the prohibition or restriction is necessary or desirable for fire control.

Fire and Emergency may also prohibit fires in the open air while any pandemic support legislation, such as the [Epidemic Preparedness \(COVID-19\) Notice 2020](#), is in force. Fire and Emergency can do this without needing to consider fire risk conditions or other factors. This might happen if our response capabilities are affected by any pandemic, and we aren't able to respond effectively if there is an unwanted fire.

Fire and Emergency can create temporary zones that are smaller than the zones in this fire plan for the purposes of limiting the impact of prohibiting fires in open air under [section 52](#) of the Fire and Emergency New Zealand Act 2017.

If someone breaches the ban, they can be charged under [section 54](#) of the Act.

Trigger thresholds for prohibiting fire in open air

We can use the same Fire Weather System trigger thresholds for prohibiting fires in the open air under [section 52](#) as we do for changing to a prohibited fire season, but use [section 52](#) when the fire risk conditions are not expected to last long enough to make changing to a prohibited fire season practical.

If Fire and Emergency has come to an agreement with stakeholders on other thresholds for when to implement a [section 52](#) prohibition of fire in open, these will be included in the zone information in this document.

Restricting and prohibiting activities (section 52)

Sometimes fire risk conditions are so high that certain activities may cause a fire to start or spread. These activities include:

- roadside mowing
- 'hot works' – cutting or welding operations outdoors using portable gas, disc grinder or arc welding equipment that produces sparks, flames or heat
- chainsaw use or scrub-cutting
- mowing, ploughing or harrowing fields
- use of retail fireworks and, in certain conditions, pyrotechnics (See the [Retail fireworks](#) and [Pyrotechnics](#) sections below)

[Section 52](#) of the Act allows us to prohibit or restrict one or more activities in an area or areas when we assess that:

- the activity (including access to an area) may cause a fire to start or spread and adequate controls are not available
- [fire risk conditions](#) exist or are likely to exist in the area
- the prohibition or restriction is necessary or desirable for fire control purposes
- it's not possible to adequately mitigate the assessed risk.

This table defines prohibition and restriction.

When an activity is...	It means the activity...
Prohibited	must not be undertaken at all by any person while the prohibition is in effect (except if it is an excluded activity that relates to the carrying out of essential services in the area).

When an activity is...	It means the activity...
Restricted	<p>can be undertaken subject to certain conditions, such as restrictions on:</p> <ul style="list-style-type: none"> • the times of the day • the manner in which it is undertaken.

If we have restricted or prohibited access to a location under [section 52](#), we can't prevent someone who lives or works in the location from entering. [Section 52](#) also doesn't prevent someone from carrying out essential services where it applies.

Essential services are:

- supplying and distributing of food, water, fuel, power, and other necessities
- maintaining transport and communication facilities that are essential to the well-being of the community
- maintaining the health of the community
- maintaining law and order, public safety, and the defence of New Zealand
- preserving property at immediate risk of destruction or damage.

Fire and Emergency can create temporary zones that are smaller than the zones in this fire plan for the purposes of limiting the impact of restricting or prohibiting activities under [section 52](#).

If someone fails to comply with the restriction or prohibition, they can be charged under [section 54](#) of the Fire and Emergency New Zealand Act 2017.

Trigger thresholds for restricting or prohibiting activities under section 52

Some industries have their own restrictions that they place on themselves when fire risk increases. However, we will use [section 52](#) to apply the restrictions or prohibitions to everyone within the zone when either:

- these voluntary restrictions are not enough to reduce the risk of a fire starting or spreading, or
- we need to restrict or prohibit the public from the same high risk activities.

Our policy for fire seasons, prohibitions and restrictions says that we only prohibit or restrict activities if:

- we have engaged with stakeholders
- they are unable to satisfactorily mitigate the identified risks.

Legally restricting or prohibiting activities can have a significant economic impact, so we won't do it without due consideration.

If we've agreed with stakeholders on set thresholds for implementing a [section 52](#) restriction or prohibition, we'll include these in the zone information in this document.

Activities and risk mitigation

Forestry operations

The New Zealand Forest Owners Association's [Forest fire risk management guidelines](#) (2018) have trigger point tables and fire prevention actions at different fire danger levels. Fire and Emergency supports these guidelines.

If local trigger values have been set, they will be listed in the zone information in this document. The NIWA's fire weather website www.fireweather.niwa.co.nz will be updated to display the levels decided locally.

Powerline auto-reclosers

Most power companies use a computer-controlled auto recloser system. This attempts to reconnect the power up to three times after a fault, before they send a technician. If a downed wire caused the fault, this creates three potential sparking events.

If local trigger values have been set, they will be listed in the zone information in this document. The NIWA's fire weather website www.fireweather.niwa.co.nz will be updated to display the levels decided locally.

To comply with the [Electricity \(Hazards from Trees\) Regulations 2003](#), power companies also take other risk reduction measures. These include trimming trees around power lines, reporting faults to the public, putting power lines underground, and giving guidance on tree planting.

Hot works

This includes activities such as welding, grinding, and metal cutting.

If local trigger values have been set, they will be listed in the zone information in this document. NIWA's fire weather website www.fireweather.niwa.co.nz will be updated to display the levels decided locally.

Fire and Emergency will work with Waka Kotahi (New Zealand Transport Agency) and local councils on roadside mowing issues during days with elevated fire danger and changing operations to suit conditions.

We will also work with Federated Farmers through the Land Management Forums to discuss the approach to fire measures, using machinery and equipment during high fire danger periods and the potential effect on local landholders.

Retail fireworks and pyrotechnics

Fire and Emergency does not regulate the use of fireworks or pyrotechnics when fire risk conditions are not elevated.

The term 'firework' is reserved for retail fireworks that are specifically sold to the public. A display of 'fireworks' does not require written agreement from Fire and Emergency. However, pyrotechnics are classed as a hazardous substance and must be under the control of a person who holds a certified handler compliance certificate for the substances they are working with. This person must get written approval from Fire and Emergency before they hold a display.

When fire risk conditions are elevated, Fire and Emergency can restrict or prohibit the use of fireworks, and in certain circumstances, pyrotechnics, as an activity under [section 52](#) of the Fire and Emergency New Zealand Act 2017.

Fireworks

Sale of fireworks is regulated by the [Hazardous Substances \(Fireworks\) Regulations 2001](#). Storage is regulated by the [Health and Safety at Work \(Hazardous Substances\) Regulations 2017](#).

Council by-laws may limit where and when fireworks may be used.

Whether fireworks should be banned is a decision for Government, and our work related to fireworks will continue to reflect decisions made by central Government.

Fire and Emergency is responsible for promoting fire safety, so we advise the public on using fireworks safely. We recommend people attend publicly organised displays where possible.

Pyrotechnics

Applications for indoor and outdoor pyrotechnic displays need to comply with sections [9.35](#) and [9.43](#) of the Health and Safety at Works (Hazardous Substances) Regulations 2017.

The person in charge of a pyrotechnics display must get written agreement from Fire and Emergency before holding the display.

The exception to requiring written agreement is for a class 1 category G pyrotechnic display. This is where the pyrotechnics are used for special effects (e.g. film set) and there is no intention to display them to the public.

Fire and Emergency is not an enforcement agency for hazardous substances.

Fire and Emergency's agreement or otherwise to a specific pyrotechnic display proceeding will be determined in accordance with Fire and Emergency's policy and standard operating procedures relating to the same.

Sometimes, after we consider the relevant risk conditions in a particular area, we may decide that, even where the requirements of the Health and Safety at Work (Hazardous Substances) Regulations 2017 could be met in terms of controlling fires igniting within an exclusion zone, the risk to the surrounding area outside of any exclusion zone nevertheless requires a prohibition or restriction of pyrotechnic displays generally under [section 52](#). However we are only likely to do this in situations where, for example, the terrain, weather and substrate are such that there is a risk of a pyrotechnic display causing fire to ignite outside of any exclusion zone in the area.

Communicating changes in fire seasons and restrictions or prohibitions

It's important that people planning to light fires in the open air know whether they can do so safely and legally. This means they need to know:

- the current fire season in the area
- whether any other prohibition applies
- whether a permit is required.

We notify our communities, stakeholders and partners of fire season changes and restrictions and prohibitions under [section 52](#) of the Act in several ways. These include:

- direct contact with our partners and stakeholders, including email
- local newspaper and radio ads
- social media and media
- email and text directly to permit holders
- on the Check It's Alright website checkitalright.nz.
- information available by phoning 0800 658 628
- with fire danger or fire season signs – we change these to reflect season status by adding 'Fire by permit only', 'Total fire ban' or similar messaging.

During periods of elevated and extreme fire danger days, we increase our communication of fire safety and prevention messages. This is to build awareness of the dangers of wildfires and promote positive behaviour changes. Since fire danger/fire risk conditions are locally specific, Districts will make local decisions about the best ways to communicate this to their communities.

We can also target messaging using traditional and digital media, such as social media and on-demand video, at affected areas at the most effective times.

When a fire season change affects public conservation land (PCL), we must also notify the Department of Conservation (DOC) if we intend to declare or revoke a prohibited or restricted fire season on public conservation land. This must also be followed up with a written notification.

Department of Conservation informs visitors of the controls or bans on lighting fires, including for cooking, warmth and campground fires, through notices and advertising.

Fire permits

The information included with a fire permit helps people understand how to light a fire safely and to reduce the risk of their fire burning out of control. Fire permits carry conditions which vary based on the type and size of the proposed fire, along with the current local fire risk conditions. To check and apply for a fire permit, visit [firepermit.nz](https://www.fireandemergency.govt.nz/firepermit).

Fire risk conditions vary by time and other factors such as fuel, weather and topography, so the acceptable conditions for burning are set for each fire permit.

We may also suspend or cancel fire permits in certain circumstances, such as:

- where fire risk conditions change
- for fire control purposes
- as fire seasons change or we imposed prohibitions.

Under [section 190\(8\)](#) of the Act, granting a fire permit does not impose any liability on Fire and Emergency.

Council by-laws, regional plans, legal covenants, or restrictions

Fire and Emergency must only consider the fire risk conditions when issuing permits. We can't apply other organisations' requirements, so even if we've issued a fire permit, you may still not be allowed to light your fire due to other requirements.

Even if you don't need a fire permit from us, due to an open fire season etc., you may not be able to light fires in some places. You must also follow council by-laws and regional plan rules relating to smoke and air pollution.

Managing smoke nuisance comes under local government jurisdiction and not Fire and Emergency's, unless the smoke is an immediate threat to life. However, we will still promote good practice and suggest alternatives.

There may also be legal covenants or restrictions which restrict the ability to light a fire in some areas, regardless of the fire season – for example, if there are power pylons or other infrastructure nearby.

You will also need private landowner or occupier approval before lighting a fire, even if Fire and Emergency has issued a fire permit.

If there is signage in a location that says to light no fires or equivalent, then you must follow those instructions.

Where relevant, information about applicable bylaws and regional plans is included in the area overview of this document.

When a permit is needed

The need for a fire permit is based on the:

- type of fire
- fire season, or restrictions or prohibitions on fires in the open air.

Fire types

Some fire types may be allowed in restricted and prohibited fire seasons by making them:

- authorised (no permit required)
- permit required

For more information on fire types, see [Open air fires – rules and permits](#) on the Fire and Emergency website [www.fireandemergency.nz](https://www.fireandemergency.govt.nz).

Authorised fire types, descriptions and conditions in a restricted fire season

This table lists the fire types that are authorised in a restricted season and the conditions for using them. As long as people using these fire types in a restricted season meet these conditions, they don't need to get a fire permit, because Fire and Emergency doesn't consider them to be fires in open air.

Fire type	Description and conditions
Gas-operated appliances	<p>Manufactured gas-operated appliances, such as barbecues, outdoor fireplaces and outdoor gas heaters.</p> <p>Find out more about the safe use of Gas BBQs, cookers and heaters.</p>
Charcoal barbecues or grills	<p>Barbecues or grills that use either charcoal briquettes or natural lump charcoal as their fuel source.</p> <p>Conditions</p> <ul style="list-style-type: none"> • Don't use on an apartment balcony, deck, under a roof overhang or within other enclosed areas. • You must have a suitable way to extinguish the fire within easy reach – a maximum of 5 metres away. • You must not leave the fire unsupervised while burning • If you cannot meet this condition, you must apply for a permit.
Open-top liquid fuel cooker	<p>Examples include (but are not limited to) portable smokers.</p> <p>These are usually small portable cooking devices that are liquid-fuelled with an open fuel container either under or in the cooking device.</p> <p>Conditions</p> <ul style="list-style-type: none"> • Must be on a non-combustible area/base. • You must have a suitable way to extinguish the fire within easy reach – a maximum of 5 metres away. • Don't light your fire within 3 metres of any part of a building, hedge, shelter belt or any other combustible material. • You must not leave the fire unsupervised while burning. • If you cannot meet these conditions, you must apply for a permit.
Non-pressurised liquid-fuelled heaters	<p>Examples include (but are not limited to) frost pot, smudge pot, diesel heater.</p> <p>Usually fuelled by diesel, vegetable oil, kerosene or waste oil.</p> <p>Conditions</p> <ul style="list-style-type: none"> • Must be at least 3 metres clear of any part of a building, hedge, shelter belt or any other combustible material. • Must be placed on a non-combustible surface, not directly on grass or wooden decks. • You must not use the heater in small, confined areas. • If refuelling, ensure heater has cooled down before refilling. • You must not leave the fire unsupervised while burning. • If you cannot meet these conditions, you must apply for a permit.
Permanent outdoor fireplace Wood-fired pizza oven/wood oven	<p>Purpose-built or manufactured woodburning fireplace/wood oven with an open front and a vertical smoke vent/chimney.</p> <p>Generally constructed of concrete, concrete blocks, stone, or bricks, fixed in place (not mobile/movable).</p>

Fire type	Description and conditions
	<p>Usually in home outdoor entertaining areas.</p> <p>Conditions</p> <ul style="list-style-type: none"> • Must have a non-combustible hearth or base that extends a minimum of 500 mm either side of the left and right edges and a minimum of 1 metre from the front edge of the fire box. This is to stop any burning material falling from the fire box landing onto anything combustible. • Smoke vent/chimneys must have a purpose-built manufactured cap, or maximum of 5 millimetre steel mesh fitted in the top to stop any hot ash or embers from escaping. • Firewood storage must be in areas not affected by heat from the fire and clear of any possible hot ash or ember-affected areas. • You must have a suitable way to extinguish the fire within easy reach – a maximum of 5 metres away. • You must not leave the fire unsupervised while burning, or • It must have a solid or mesh screen/door that prevents any burning material from escaping the fire box. • Fireplaces with external construction made of steel must be at least 1 metre clear of any part of a building, hedge, shelter belt or any other combustible material. • If you cannot meet these conditions, you must apply for a permit.
Movable/ portable free-standing front-loading fireplace.	<p>Examples include (but are not limited to) chiminea.</p> <p>A freestanding front-loading fireplace or oven, usually with a bulbous body – usually has a vertical smoke vent or chimney.</p> <p>Conditions</p> <ul style="list-style-type: none"> • Don't light your fire within 3 metres of any part of a building, hedge, shelter belt or any other combustible material. • You must have a suitable way to extinguish the fire within easy reach – a maximum of 5 metres away. • You must not leave the fire unsupervised while burning or • It must have a solid or mesh screen/door that prevents any burning material from escaping the fire box. • If you cannot meet these conditions, you must apply for a permit.
Cultural cooking fires	<p>Conditions</p> <p>Examples include hāngi, umu and lovo.</p> <p>Conditions</p> <ul style="list-style-type: none"> • Your fire area must be less than 4 square metres. • Don't light your fire within 5 metres of any part of a building, hedge, shelter belt or any other combustible material. • You must have a suitable way to extinguish it within easy reach – a maximum of 5 metres from your cultural fire. • You must not leave the fire unsupervised while burning. • On completion of cooking or the purpose required for cooking food the fires must be extinguished. • If you cannot meet these conditions, you must apply for a permit.

Fire type	Description and conditions
Braziers Fire pits/bowls (Recreational)	<p>Find out more about the safe use of Cultural cooking fires.</p> <p>Brazier: a container for hot coals – usually an upright standing or hanging metal bowl or box.</p> <p>Fire pit/bowl: a pit dug in the ground, made from stone, brick or metal, or a bowl on an upright stand.</p> <p>Conditions</p> <ul style="list-style-type: none"> • Your fire area must be less than 1 square metre. • Where hot embers/ash are able to escape, there must be a non-combustible base/tray that will contain these hot embers or ash, to prevent any risk of fire escaping. • Don't light your fire within 3 metres of any part of a building, hedge, shelter belt or any other combustible material. • You must have a suitable way to extinguish it within easy reach – a maximum of 5 metres from your brazier or fire pit/bowl. • You must not leave the fire unsupervised while burning. • If you cannot meet these conditions, you must apply for a permit.
Manufactured or drum incinerators	<p>A drum or container, with a mesh or solid lid designed to prevent the escape of hot ash or fire, often with a vertical smoke vent or chimney; designed exclusively for incineration.</p> <p>Conditions</p> <ul style="list-style-type: none"> • Don't light your fire within 5 metres of any part of a building, hedge, shelter belt or any other combustible material. • You must have a suitable way to extinguish it within easy reach – a maximum of 5 metres from your incinerator. • Smoke vent/chimneys must have a purpose-built manufactured cap or maximum of 5 millimetre steel mesh fitted in the top to stop any hot ash or embers from escaping. <p>If you cannot meet these conditions, you must apply for a permit.</p>

Authorised fire types on public conservation land in a restricted fire season

This table lists the fire types that are authorised on public conservation land (PCL) in a restricted fire season and the conditions for using them. As long as people using these fire types in a restricted season meet these conditions, they don't need to get a fire permit, because Fire and Emergency doesn't consider them to be fires in open air.

Fire type	Description and conditions
Gas-operated appliances	<p>Manufactured portable gas-operated appliances, such as butane tramping stoves, gas barbeques and outdoor gas heaters.</p> <p>Find out more about the safe use of barbeques and gas cylinders and outdoor gas-operated appliances.</p> <p>Conditions</p> <p>The gas-fire must not be:</p> <ul style="list-style-type: none"> lit if the appliance is not in full operational condition in accordance with the manufacturer's specifications lit unless on a flat, level surface, stable and solid enough to support the weight of the appliance plus any containers and food used during cooking lit unless at least one metre clear of all combustible material lit in conditions where wind or other factors may cause the fire to spread to surrounding flammable material left unsupervised while flame is present.
Pressurised liquid appliances	<p>Manufactured portable liquid cookers which use liquid under pressure to fuel the cooker. The type of liquid is not specific (e.g. White spirits, kerosene or methylated spirits) but the delivery mechanism is.</p> <p>Note: This excludes cookers using an open top, non-pressurised system.</p> <p>Conditions</p> <p>The pressurised liquid fire must not be:</p> <ul style="list-style-type: none"> lit if the appliance is not in full operational condition in accordance with the manufacturer's specifications lit unless it is on a flat, level surface, stable and solid enough to support the weight of all the appliance parts plus any containers and food used during cooking lit unless at least one metre clear of all combustible material lit in conditions where wind or other factors may cause the fire to spread to surrounding flammable material left unsupervised while flame is present and/or the liquid is still turned on.
Campfires in a permanent fireplace	<p>Positioned and constructed by the Department of Conservation (DOC) to minimise the threat of fire spread and located within formally established DOC overnight campsites or daytime amenity areas.</p> <p>Conditions</p> <p>The campfire in a permanent fireplace must not be:</p> <ul style="list-style-type: none"> lit if the fireplace has any damage that could allow the fire, hot embers, or ash to escape and spread beyond the constructed fireplace within three metres of any combustible material

Fire type	Description and conditions
	<ul style="list-style-type: none"> • lit where notices and advertising are present which specifically prohibit the lighting of fires • lit during a prohibited fire season • lit in conditions where wind or other factors may cause the fire to spread to surrounding flammable material • left unsupervised while burning and without the ashes being fully extinguished • used to burn rubbish.
Cooking and warming fires	<p>Small, open outdoor wood-burning fires are only permitted to be lit on PCL in remote areas and only if required for essential cooking or survival purposes. As a guide, remote areas for this purpose are considered to be at least 3km from the nearest public road, public vehicle easement accessway or publicly accessible jetty or wharf.</p> <p>Additionally, fires must not be lit in locations fitting the freedom camping criteria, as defined in the Freedom Camping Act (2011).</p> <p>Conditions</p> <p>The cooking and warmth fire must not be:</p> <ul style="list-style-type: none"> • more than 0.5 m diameter x 0.5 m height (including wood and flames) • within three metres of any tree or any place underneath overhanging vegetation; and • within three metres of any log or any dry vegetation • lit unless and until the ground surface within three metres of the site of the fire has been cleared of all combustible material • lit where notices and advertising are present which specifically prohibit the lighting of fires or specify the lighting of fires only in other types of receptacles or places • lit in National Parks which have bylaws prohibiting the lighting of wood burning fires in the open air • lit during a prohibited fire season • lit in conditions where wind or other factors may cause the fire to spread to surrounding flammable material • left unsupervised without the ashes being fully extinguished • used to burn rubbish. <p>Note: This only applies to small open fires (as described above). Solid fuel fires, front loaded portable fires, non-gas barbecues or chimineas are all prohibited fire types on Public Conservation Lands at all times.</p> <p>Find out more about the safe use of campfires.</p>

Authorised fire types, descriptions and conditions in a prohibited fire season

This table lists the fire types that are authorised in a prohibited season and the conditions for using them. As long as people using these fire types in a prohibited season meet these conditions, they don't need to get a fire permit, because Fire and Emergency doesn't consider them to be fires in open air.

Fire type	Description and conditions
Gas-operated appliances	<p>Manufactured gas-operated appliances, such as barbecues, gas outdoor fireplaces and outdoor gas heaters.</p> <p>Conditions</p> <p>Find out more about the safe use of Gas BBQs, cookers and heaters.</p>
Charcoal barbecues or grills	<p>Barbecues or grills that use either charcoal briquettes or natural lump charcoal as their fuel source.</p> <p>Conditions</p> <ul style="list-style-type: none"> • Don't use on an apartment balcony, deck, under a roof overhang or within other enclosed areas. • You must have a suitable way to extinguish the fire within easy reach – a maximum of 5 metres away. • You must not leave the fire unsupervised while burning. • If you cannot meet these conditions, you must apply for a permit.
Open top liquid fuel cooker	<p>Examples include (but are not limited to) portable smokers.</p> <p>These are usually small portable cooking devices that are liquid-fuelled with an open fuel container either under or in the cooking device.</p> <p>Conditions</p> <ul style="list-style-type: none"> • Must be on a non-combustible area/base. • You must have a suitable way to extinguish the fire within easy reach – a maximum of 5 metres away. • Don't light your fire within 3 metres of any part of a building, hedge, shelter belt or any other combustible material. • You must not leave the fire unsupervised while burning.
Non-pressurised liquid-fuelled heaters	<p>Examples include (but are not limited to) frost pot, smudge pot, diesel heater.</p> <p>Usually fuelled by diesel, vegetable oil, kerosene or waste oil.</p> <p>Conditions</p> <ul style="list-style-type: none"> • Must be at least 3 metres clear of any of any part of a building, hedge, shelter belt or any other combustible material. • Must be placed on a non-combustible surface, not directly on grass or wooden decks. • You must not use the heater in small, confined areas. • If refuelling, ensure heater has cooled down before refilling. • You must not leave the fire unsupervised while burning. • If you cannot meet these conditions, you must apply for a permit.

Fire type	Description and conditions
Permanent outdoor fireplace Wood-fire pizza oven/wood oven	<p>Purpose-built or manufactured woodburning fireplace/wood oven with an open front and a vertical smoke vent/chimney.</p> <p>Generally constructed of concrete, concrete blocks, stone, or bricks, fixed in place (not mobile/movable).</p> <p>Usually in home outdoor entertaining areas.</p> <p>Conditions</p> <ul style="list-style-type: none"> • Must have a non-combustible hearth or base that extends a minimum of 500 mm either side of the left and right edges and a minimum of 1 metre from the front edge of the fire box. This is to stop any burning material falling from the fire box landing onto anything combustible. • Smoke vent/chimneys must have a purpose-built manufactured cap, or maximum of 5 millimetre steel mesh fitted in the top to stop any hot ash or embers from escaping. • Firewood storage must be in areas not affected by heat from the fire and clear of any possible hot ash or ember-affected areas. • You must have a suitable way to extinguish the fire within easy reach – a maximum of 5 metres away. • You must not leave the fire unsupervised while burning, or • It must have a solid or mesh screen/door that prevents any burning material from escaping the fire box. • Fireplaces with external construction made of steel must be at least 1 metre clear of any of any part of a building, hedge, shelter belt or any other combustible material. <p>If you cannot meet these conditions, you must apply for a permit.</p>
Movable/ portable free-standing front-loading fireplace.	<p>Examples include (but are not limited to) chiminea.</p> <p>A freestanding front-loading fireplace or oven, usually with a bulbous body – usually has a vertical smoke vent or chimney.</p> <p>Conditions</p> <ul style="list-style-type: none"> • Don't light your fire within 3 metres of any part of a building, hedge, shelter belt or any other combustible material. • You must have a suitable way to extinguish that will easily reach it, a maximum of 5 metres away. • You must not leave the fire unsupervised while burning or • It must have a solid or mesh screen/door that prevents any burning material from escaping the fire box. <p>If you cannot meet these conditions, you must apply for a permit.</p>
Cultural cooking fires	<p>Examples include hāngi, umu and lovo.</p> <p>Conditions</p> <ul style="list-style-type: none"> • Your fire area must be less than 4 square metres. • Don't light your fire within 5 metres of any part of a building, hedge, shelter belt or any other combustible material. • You must have a suitable way to extinguish it within easy reach – a maximum of 5 metres from your cultural fire. • You must not leave the fire unsupervised while burning.

Fire type	Description and conditions
	<ul style="list-style-type: none"> On completion of cooking or the purpose required for cooking food the fires must be extinguished. <p>If you cannot meet these conditions, you must apply for a permit.</p> <p>Find out more about the safe use of cultural cooking fires – fireandemergency.nz > Traditional or cultural use of fire.</p>

Authorised fire types on public conservation land in a prohibited fire season

This table lists the fire types that are authorised on public conservation land (PCL) in a prohibited fire season and the conditions for using them. As long as people using these fire types in a prohibited season meet these conditions, they don't need to get a fire permit, because Fire and Emergency doesn't consider them to be fires in open air.

Fire type	Description and conditions
Gas-operated appliances	<p>Manufactured gas-operated appliances, such as barbeques, outdoor fireplaces and outdoor gas heaters.</p> <p>Find out more about the safe use of Gas BBQs, cookers and heaters.</p>

Permits in prohibited fire seasons or during prohibitions under section 52

Fire and Emergency may grant permits:

- during a prohibited fire season, or
- when there is a prohibition under [section 52](#) of the Act but the fire or activity is necessary to prevent, reduce, or overcome any hazard to life or because of any other serious emergency.

We may grant fire permits during a prohibited fire season if weather or other conditions have temporarily reduced the fire hazard, so as to make it apparently safe to light a fire.

Note: Fire and Emergency may grant permits for the purposes of assisting compliance with other legislation such as Bio-security measures. For example:

The Management Agency for the American Foulbrood (AFB) Pest Management Plan implements the Biosecurity (National American Foulbrood Pest Management Plan) Order 1998.

- Where AFB is discovered, beekeepers have an obligation within 7 days of becoming aware of that case to destroy all honeybees, bee products, and appliances associated with that infected honeybee colony by burning.
- If it's a PROHIBITED fire season – Fire and Emergency New Zealand will promptly (24hrs) produce a District Manager-approved special Fire Permit to Burn during a prohibited season, under biosecurity emergency response status.

Permits issued in a prohibited fire season (e.g. for biosecurity reasons) remain active when the fire season changes.

Applying for a permit

To check if a fire permit is required, use the website checkitsalright.nz. If you need a permit, this site will automatically take you to the fire permits website.

When you know you need a fire permit, you can apply:

- online through Fire and Emergency's fire permitting system – firepermit.nz
- over the phone – 0800 658 628. Your application is then completed in the online system on your behalf

- in person, by asking local Fire and Emergency fire permitting personnel for a fire permit
- by email or post, using the manual [fire permit application form](#). You can print and complete the form by hand or complete the editable pdf and send it back to us.

Assessment

The fire permit assessors will make a risk-based decision about whether a desk-based assessment or an on-site inspection of the burn location is required before deciding to grant or refuse the fire permit.

Note: Where an application has multiple burn locations, they must consider each location.

The assessor must inspect a permit applications if:

- they have insufficient information to make a desk-based assessment, or
- where any of the following apply to the proposed fire:
 - it is during a prohibited fire season
 - it requires a burn plan
 - it is in a location where the predominant fuel type is considered to be of high flammability
 - it is in a location that is adjacent to areas of significant commercial or environmental values
 - it involves multiple fires burning at the same time in different locations on a property
 - it is located on steep or complex terrain
 - it involves burning large amounts of material unless the applicant has a history of successfully managing similar fires.

The follow additional factors can be considered to be fire risk conditions or relevant fire control matters:

- The environment around the burn site
- The actual site area and boundaries of the proposed burn
- Other property and/or values at risk from a possible escaped fire
- Other relevant hazards
- Time of ignition, light-up sequence and method of the proposed fire
- Potential fire behaviour and rate of fire spread
- Firebreaks around the area to be burnt
- Resources available to carry out the burn safely and effectively
- The applicant's understanding of the risks associated with the proposed fire, and their ability to manage those risks effectively.

Prescribed burn plans may be required for complex and higher-risk burns, e.g. land clearing. They help the person proposing to burn to:

- go through a planning process
- consider how to undertake the proposed fire safely.

The applicant is responsible for developing the [prescribed burn plan](#). However, we can advise them what the plan should contain to carry out the proposed fire safely.

Mandatory conditions

Every permit must contain standard conditions that are required by the [Fire and Emergency New Zealand \(Fire Permits\) Regulations 2017](#) and cannot be removed. These are:

- You must not light a fire in fire risk conditions that make it likely that the fire will spread beyond the limits of the location or property specified in the permit as the location of the fire.
- If this permit was issued for a proposed fire in an area which is in a restricted fire season:

- it is suspended if we declare a prohibited fire season or prohibit fire in open air
- you must, immediately before lighting a fire, make reasonable efforts to confirm that, in the location of the fire:
 - no prohibited fire season is in place; and
 - no prohibition on the lighting of fires in open air is in place.

If the fire permit is issued when fire has been prohibited in open air ([section 52](#) (1) of the Act) the following condition must be included on the permit:

- immediately before lighting a fire you must make reasonable efforts to confirm that no restricted or prohibited fire season under [section 56](#) (1) of the Act is in place in the location of the fire. Use [Checkitsalright.nz](https://www.firepermit.nz).

The permit will also include a condition to notify the Communications Centre immediately before lighting the fire. For example:

- notify us before lighting the fire using the text code or email links provided or at <https://www.firepermit.nz/FENZ/Default.aspx>.
- call Southern fire communications on 03 341 0266.

For fire permits where the public are likely to notice the fire call 111, we prefer you notify us electronically.

For example, where the fire :

- is close to a road, or to other houses or buildings
- covers a large area, such as land clearing.

During an open fire season, you can notify us by contacting the [fire communications centre](#), or preferably by clicking **Lighting a fire in an open season** on [firepermit.nz](https://www.firepermit.nz) and completing the **Permit Activation** form.

These notifications are flagged within the call centre system, so if they get a 111 call, it's clear there is a permitted/controlled fire.

Firebreaks

Fire and Emergency has the authority under [section 62](#) of the Act to require landholders to make or clear firebreaks on the landholder's land, or keep them clear if we think it's needed for fire control. This can include green firebreaks of strips of low flammability or removing all vegetation down to mineral earth.

Sections [63–68](#) of the Act explain appeal provisions and compliance pathways.

We use our [Firebreaks policy and guideline](#) to apply the relevant science-based calculation to check if a fire break is the right solution. The policy guides us on working closely with affected landholders to work towards a voluntary solution.

Fire and Emergency has powers to:

- require compliance
- make or clear any firebreak
- issue an infringement notice if compliance is not reached voluntarily.

Note: This power relates to making and clearing firebreaks outside of incident response – before a fire happens. Our powers during response in [section 43](#) allow us to create firebreaks as needed to prevent the spread of fire.

Fire hazard removal

Sometimes, Fire and Emergency reasonably considers that vegetation, or some other thing, is a fire hazard, meaning that it is likely to endanger people or property by increasing the risk of outbreak or spread of fire. In these situations, we can require that the vegetation or thing be removed or destroyed.

We will work with affected people to fix the issue first, but we're authorised under [section 65](#) of the Act to legally require action. You then have one month to fix the problem, although you can appeal against the requirement. You must appeal within 14 days and your appeal will be handled through Fire and Emergency's dispute resolution scheme.

Our fire hazard removal powers apply to anything on the land, but not to anything on or inside a building. Local councils have the authority to address fire risk related to buildings, such as hoarding.

If it's urgent (an imminent danger) we can tell you, and immediately fix the problem ourselves to keep people and property safe.

Reporting fire hazards

Anyone who becomes aware of a fire hazard, or is worried that something is a fire hazard, can report it to Fire and Emergency.

To do this:

1. Go to [Fire hazards in your community](#).
2. Scroll down the page and choose **Submit a Fire Hazard Assessment Request**.
3. At the bottom of the page, under **Report a Potential Fire Hazard**, click **Start process**.
4. Complete the 'Potential Fire Hazard Advice' form.

Assessment of fire hazards

Fire and Emergency will assess whether there is a potential for the fuel to harm people or damage property if a fire starts. We will assess the likelihood of a fire starting and the consequences in terms of risk to human life, structures and other values.

We use an assessment tool to provide a structured framework for determining whether:

- it is appropriate for us to exercise our fire hazard removal powers under [sections 65–68](#) of the Act
- it is more appropriate to educate the complainant or occupier/owner of the location of the potential fire hazard on how to mitigate risks from fires
- to refer the matter to another jurisdiction
- no further action is required.

Initial review

The assessor starts by answering four key questions:

- Is the potential hazard:
 - trees close to power lines, or
 - hoarding inside a building?
- If yes, then the hazard is referred to the relevant lines company or local council for action.
- Is the material involved likely to pose a risk to life or property through ignition without spreading? This covers fuel types that are likely to endanger adjacent or downwind properties (either through creating significant health concerns or possible contamination damage), without spreading. This could be due to smoke toxicity or high intensity of burning.

- Is there sufficient material of appropriate type and composition to support a fire spreading to adjacent property or values? This captures the spread potential, taking into consideration the physical properties of the fuel as well as the general topography and onsite conditions. That includes continuity, size and shape, fuel load and flammability, as well as likely direction of fire travel.
- Is the burning material likely to produce enough heat to cause damage to property? Gives consideration to the fire having sufficient energy to actually cause damage to property if spread to it, or to compromise the health of property users.

Risk assessment matrix

If it's appropriate, we then use a risk assessment matrix. This involves:

- assigning a risk of ignition rating, where 'rare' is a low rating and 'almost certain' is a high rating
- assigning a likely consequence rating for each component, and using the highest value of:
 - human life at risk
 - structure at risk
 - other values at risk
- using the risk of ignition and likely consequence ratings to determine the risk assessment score in the matrix

		Likely consequence (highest consequence rating)				
		1	2	3	4	5
Risk of ignition rating	5	5	10	15	20	25
	4	4	8	12	16	20
	3	3	6	9	12	15
	2	2	4	6	8	10
	1	1	2	3	4	5

- using the risk assessment matrix score to determine the next course of action.

Score	Next course of action
1-5	No further action.
6, 8, 9	Consider providing information/education to occupier/owner/complainant on how to mitigate risks from fire.
10, 12	Provide information/education to occupier/owner/complainant on how to mitigate risks from fire.
15, 16	Consider issuing a <i>Fire hazard removal notice (s 65)</i> , otherwise provide information/education to the occupier/owner /complainant on how to mitigate risks from fire.
20, 25	May issue a voluntary compliance letter citing a timeframe to meet that compliance. Failure to comply means the assessor must issue a <i>Fire hazard removal notice (s 65)</i> . Consider if an <i>Imminent danger notice (s 68)</i> is appropriate.

Outcomes from the fire hazard assessment

The assessment will recommend one of the following courses of action:

1. No further action, because the vegetation or other thing does not present a fire hazard, or imminent danger. The matter may be referred to another agency, such as the local council if appropriate, e.g. hoarding or vermin infestation.
2. Providing education and information to the occupier or owner of the land, and/or to the complainant, on how to mitigate any risks from fire. We would do this where the notice threshold has not been reached but the assessment indicates that proactive action would be helpful.
3. Giving the occupier or owner of the land the opportunity to voluntarily mitigate the risk within an appropriate time period. We would do this if the threshold for issuing a Fire hazard removal notice ([section 65](#)) has been met. If the occupier or owner won't do this voluntarily, we will issue them with a Fire hazard removal notice ([section 65](#)). This notice gives them one month to remove or destroy the vegetation or other thing increasing the risk of the outbreak or spread of fire.
4. Give the owner or occupier of the land verbal notice that we are taking immediate action to remove or destroy any vegetation or other thing on the land that is a source of imminent danger under [section 68](#). We would only use this power when there is an 'almost certain' likelihood of a fire starting or spreading at any moment that would put life or property at risk.

Note: We will use this power very rarely.

Powers of entry

We will not enter private property without permission from the occupier other than to knock on the front door or other entry point to find and speak with an occupier.

If the occupier doesn't give us permission or we can't find them, we will attempt to assess the potential fire hazard from outside of the property. For example, we might view it from the roadside or from a neighbouring property if the neighbour consents to us entering their property.

If we need to, a Fire and Emergency inspector can enter and inspect land that is not a home or marae (or a building associated with a marae) to determine whether certain materials (including timber, dry plant cuttings and other flammable material) are being stored outside a building in a way that creates a fire hazard to the building, another building, or to any road or other public place (see [regulation 13\(4\)](#) of the [Fire and Emergency New Zealand \(Fire Safety, Evacuation Procedures, and Evacuation Schemes\) Regulations 2018](#)).

A Fire and Emergency inspector must obtain a warrant to enter and inspect land that is a home or marae (or a building associated with a marae).

We can take photographs of private land (or things on private land) from public land as long as we don't take pictures of an area or thing that a person can reasonably expect to be private (e.g. a photo that includes a view into a shower or a secluded area where someone is sunbathing).

Fire hazard removal notice (section 65)

A fire hazard removal notice ([section 65](#)) is formal written notification under [section 65](#) of the Act to an occupier or owner of land that they must remove or destroy the 'vegetation or other thing' that we've assessed as meeting the threshold for issuing a notice.

The notice:

- describes the vegetation or other thing that must be removed or destroyed, including a map if practicable identifying the specific location or extent of the vegetation or other thing
- explains the risk that Fire and Emergency reasonably considers that the vegetation or other thing presents
- specifies the actions that must be taken to mitigate the fire hazard risk, e.g. how much vegetation must be removed or destroyed.

Before we issue a fire hazard removal notice, we will always try to negotiate with the occupier or owner to give them an opportunity to fix the issue voluntarily.

The occupier of the land where the fire hazard is located is primarily responsible for removing or destroying it. If the land is unoccupied, then the responsibility passes to the owner of the land.

Occupier, in relation to any place or land, means any person in lawful occupation of that place or land; and includes any employee or other person acting under the authority of any person in lawful occupation of that place or land.

Imminent danger notice (section 68)

An Imminent danger notice is verbal notification under [section 68](#) of the Act to an occupier or owner of land that Fire and Emergency is going to enter the land and remove or destroy any vegetation or other thing on land that we consider is a source of imminent danger from fire to life, property, or any road.

Anyone receiving the verbal notice should be able to understand:

- that Fire and Emergency has decided that [description of fire hazard] is a source of imminent danger to [life, property, and/or road]
- why the fire hazard is a source of imminent danger
- that Fire and Emergency has arranged for the [removal or destruction] of the fire hazard under [section 68](#) of the Act by [name of contractor] on [date]
- any arrangements for the storage of items removed from the land, and the terms under which the owner/occupier can retrieve those items.

In the event of an actual fire, we can use all of our powers to deal with the emergency, including [sections 42 and 43](#) to remove vegetation or material without telling you.

Regulatory compliance

Fire and Emergency's role

The Act gives Fire and Emergency compliance and enforcement responsibilities, and powers to support interventions in cases of non-compliance. In line with this, we have developed a comprehensive [Risk Reduction Strategy](#), supported by a Regulatory compliance policy. Our [Regulatory compliance guide](#) has details of our approach to compliance.

Our compliance activities generally focus on education and awareness first, followed by issuing warnings. If compliance is still an issue, then we may use more formal enforcement powers.

If there are cases of serious or repeated non-compliance, we may use infringement notices or prosecute. For more information on our regulatory compliance policies and procedures and other relevant topics, visit [Regulatory compliance](#).

Contact Fire and Emergency

In case of an emergency please call 111

General enquiries and questions

- Recruitment/volunteering
- Fire safety information
- Fire permits and seasons
- Evacuation schemes
- Request for access to the site of an emergency.

[Submit a general enquiry or question](#) or call 04 496 3600.

Lodge a complaint

<https://www.fireandemergency.nz/contact-us/complaints/>

Fire hazards

- Complete [this online form](#)
- You can also call the Regulatory Compliance Group on 0800 336 942.

Local contacts for this plan

Local contacts specific to this fire plan are included with the area information in this document.

Glossary

4Rs – Reducing risk, ensuring response readiness, providing emergency response and making coordinated efforts to enable recovery following an emergency.

Build-up Index (BUI) – A component of the Fire Weather System. This index shows the amount of fuel available for combustion, indicating how the fire will develop after the initial spread. It is calculated using the Duff Moisture and Drought Code.

Duff Moisture Code (DMC) – A numerical rating of the average moisture content of loosely compacted organic layers of moderate depth. This code gives an indication of fuel consumption in moderate duff layers and medium-size woody material.

Firebreak – A natural or artificial physical barrier against the spread of fire from or into any area of continuous flammable material – e.g., a track bulldozed clear of all vegetation.

Fire control – Preventing, detecting, controlling, and putting out fire, and protecting persons and property from fire.

Fire control powers – Our ability to legally require people to stop doing things that increase the risk of a fire – e.g. restricting where and when they can use fire, requiring vegetation to be removed to prevent the spread of fire, etc.

Fire danger – A rating of how difficult a fire will be to control once it starts – e.g. low to extreme: low being easy to contain, extreme very difficult to contain.

Fire Danger Rating System - A relative class denoting the potential rates of spread, or suppression difficulty for specific combinations of temperature, relative humidity, drought effects and wind speed, indicating the relative evaluation of fire danger.

Fire environment – The surrounding conditions, influences, and modifying forces of topography, fuel, and weather that determine fire behaviour.

Fire hazard – Vegetation or other thing on the land that Fire and Emergency reasonably considers likely to endanger persons or property by increasing the risk of the outbreak or spread of fire.

Fire in open air – Fire that isn't in a fireplace in a building or structure or isn't in something else that Fire and Emergency says is not in the open air.

Fire risk conditions - Weather or other conditions that will, or are likely to, endanger persons or property by increasing the risk of the outbreak or spread of fire.

Fire seasons – Period when we restrict or prohibit the use of fire in the open air. Areas that are not in a Restricted or Prohibited fire season are in an Open fire season. Can also refer to the October to May period when fires are more likely.

Fire weather – Weather conditions which influence fire ignition, behaviour and suppression.

Fire Weather System – Numerical values that indicate weather and fuel conditions that influence fire behaviour, which feeds into the Fire Danger Rating System.

Grass curing (GC) – A component of the Fire Weather System. Grass goes through a natural process where after flowering/seeding it changes colour as it dies off. This process is known as 'curing.' The degree of curing (%) is the portion of dead grass vs live. Dead grass allows fire to spread easily.

Important Bird Areas (IBAs) – Sites recognised as internationally important for bird conservation and known to support key bird species and other biodiversity. Legal protection, management and monitoring of these crucial sites are all important targets for action. Many bird species may be effectively conserved by these means.

Land cover – What covers the land – trees, grasslands, scrub, residential property.

Land use – How the land is used – e.g. primary production (farming), forestry, residential, industrial.

Local area – The area within the boundaries of a local advisory committee that are set in accordance with [section 16](#) of the Act.

Primary production – Livestock farming for dairy, meat and wool. Horticulture, including kiwifruit, apples, avocados, grapes for wine production, vegetables, arable and seed crops, other horticultural crops, cut flowers, and other animal products. Also includes forestry, but this is dealt with separately in fire plans.

Public conservation land (PCL) – Land used for conservation purposes, including National Parks and forest parks. Often managed by Department of Conservation or the regional council.

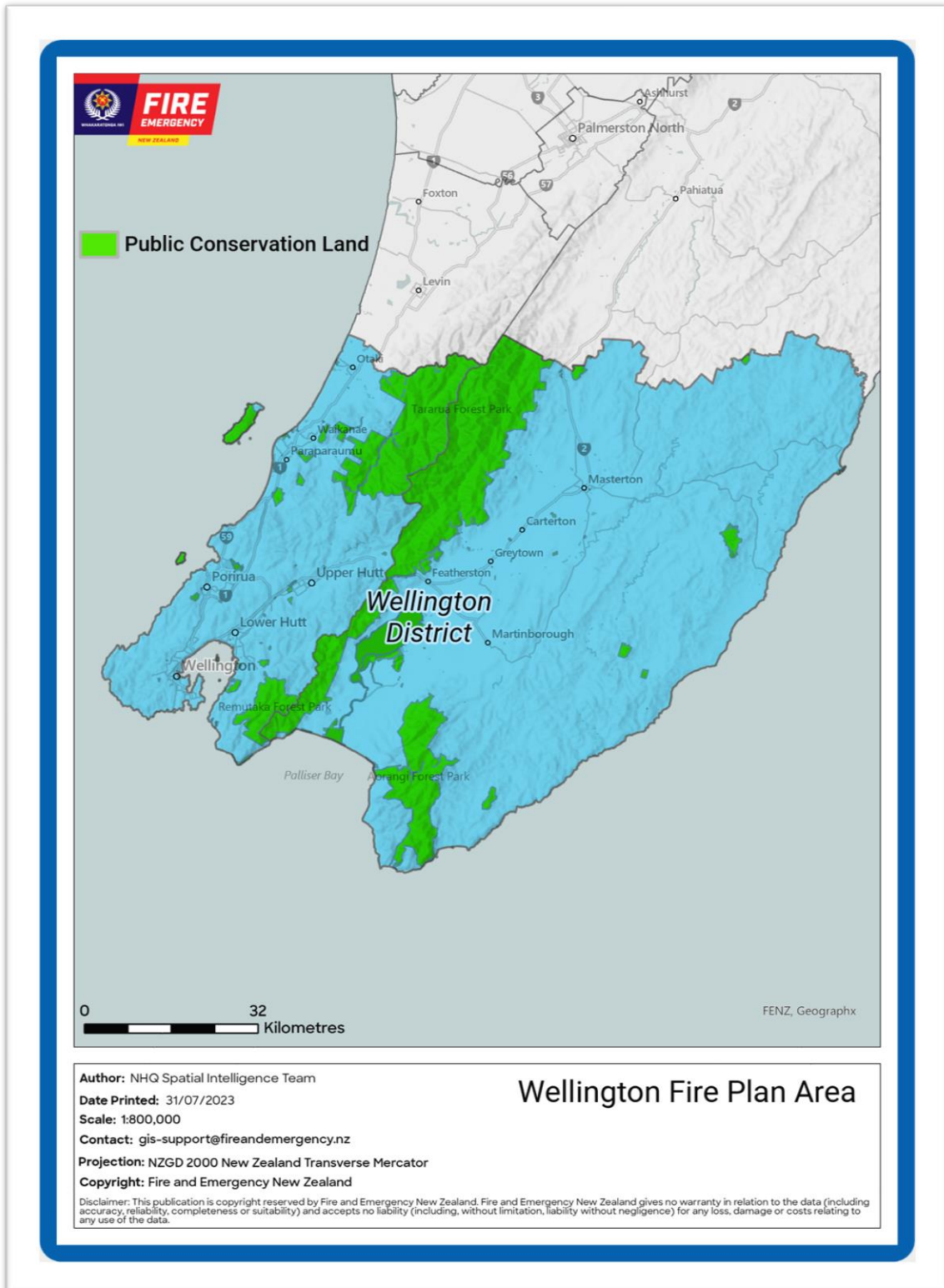
Remote Automatic Weather Station (RAWS) – Weather station that automatically provides the data used to determine weather and fuel conditions. Results are available from <https://fireweather.niwa.co.nz> and products such as Eco Connect.

Scientific Reserves – Per the [Reserves Act 1977](#), the principal purpose of these reserves is the protection and preservation in perpetuity of areas for scientific study, research, education and the benefit of the country.

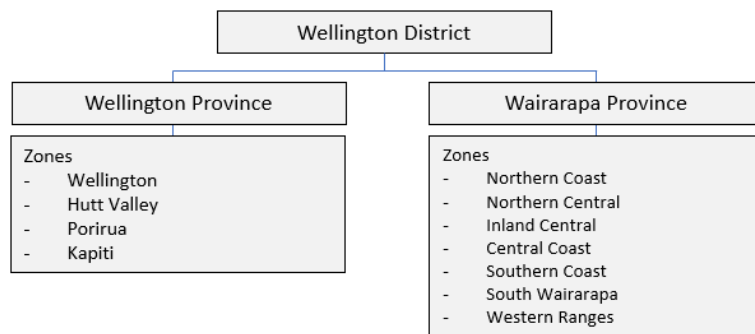
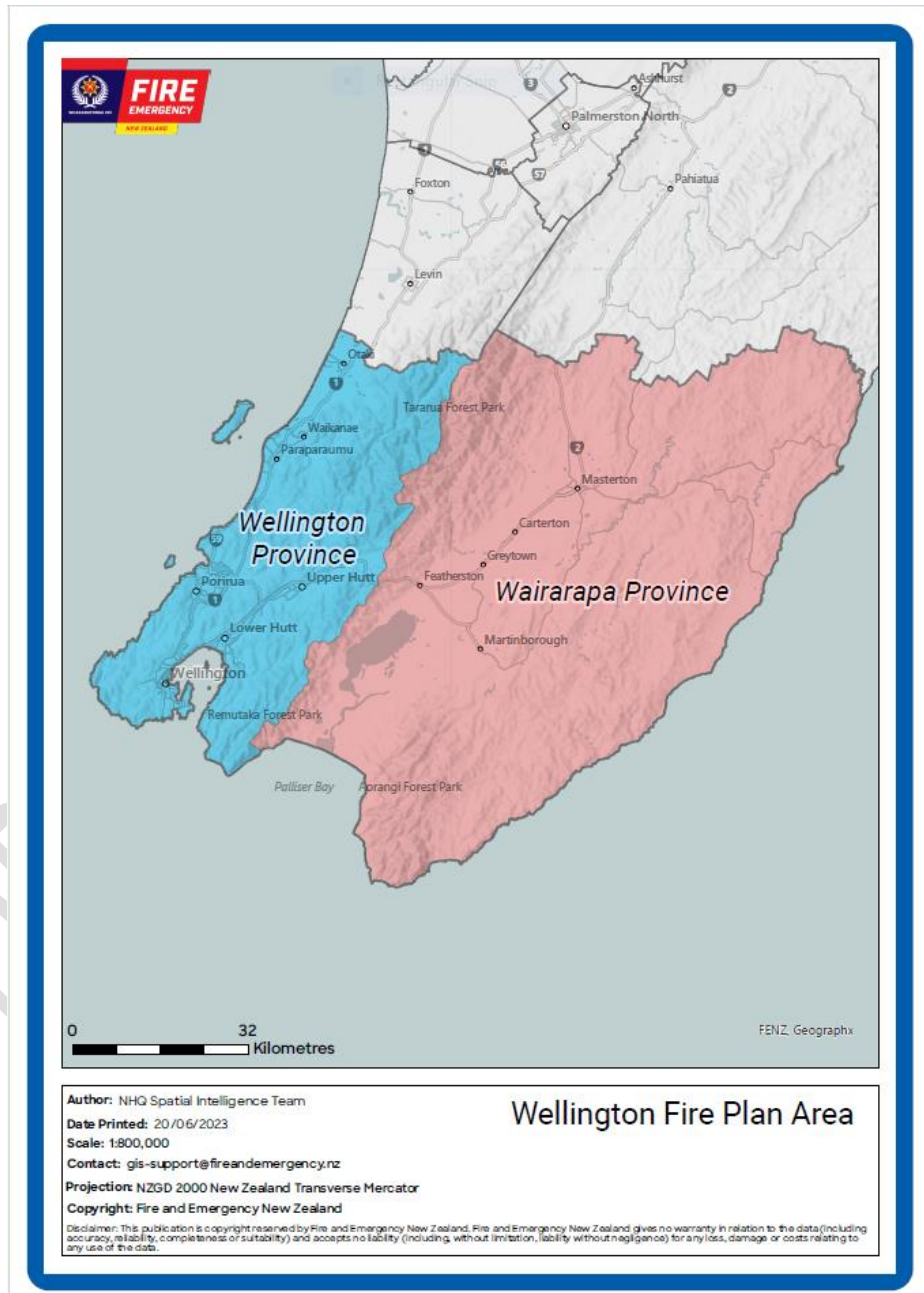
DRAFT FOR
CONSULTATION

Wellington District Information

This section contains the information specific to this fire plan area, including an overview of the area as a whole, and more detailed information for each of the zones within the area.



Area overview



Geography

For this fire plan, the boundaries are those of the Wellington Local Advisory Committee, which are the same as the boundaries of the Greater Wellington Regional Council. This is divided into the Wellington Province, including Kāpiti Coast District, Porirua, Upper Hutt, Lower Hutt, and Wellington cities, and the Wairarapa Province, including Masterton, Carterton, and South Wairarapa Districts.

The area's geography incorporates inland ranges, basins, coastal lowlands, islands, and beaches. The complex topography of the fire plan area means that we have separated the area into a number of zones, as there are significant climatic deviations.

The climate and weather of the area are strongly influenced by Cook Strait and rugged topography. The Wairarapa Province experiences more temperature and rainfall extremes than Wellington Province. Rainfall varies within the Wellington region by season.

The Wairarapa province covers 593,624 hectares, used intensively for agriculture, horticulture, and viticulture, particularly within the Ruamāhanga Valley, which places a high economic importance on land use. The eastern hill country supports sheep and beef farming and commercial forestry. Access within the eastern hill country is restricted, with some areas being very remote.

The entire area has a mix of both dense and sparsely populated areas. Major transport routes dissect the province including State Highways 2, 52 and 53, as well as the East Coast Rail link.

The Wellington Province is characterised by steep hills covered in vegetation and coastal areas with limited access. Land cover concentrations in the Wellington Province includes gorse and broom, indigenous forest, smaller areas of exotic forest, and coastal areas yielding high producing grass lands.

Potential fire behaviour in this zone increases due to the abundance of flammable vegetation (high vegetation fuel loads) such as, grass, gorse, and scrub, and the predominant dry and/or windy climate.

Population growth rates and land available for future housing means this is encroaching on areas used for agriculture creating an increased fire risk at the urban and rural interface.

The area sits on several fault lines. Two of the more significant faults are the Wellington Fault and the Wairarapa Fault. Each of these faults can cause a severe earthquake. Risks associated with this could result in severe impacts on business continuity and operational capability, including isolation, road closures, liquefaction, slips, bridge collapse and risk of fire due to utility services failure.

Climate change projections

Seasonal projections show that Paraparaumu is likely to experience 5 to 13 per cent more rainfall in winter by 2090, while Masterton is likely to experience up to 7 per cent less rainfall.

The frequency of extremely windy days in the area is likely to increase by 2 to 3 per cent by 2090. There may be an increase in westerly wind flow during winter and north-easterly wind flow during summer.

Predictions of impacts by season indicate an increase in rainfall for the Wellington Province, but a decrease in rainfall for Wairarapa Province, with temperature rises ranges from 0.7°C to 3.2°C.

Demographics

Demographics help us understand how our communities use fire, and the type of support they might need and how we communicate with them.

The Wellington region is a series of closely interlinked cities and is home to approximately 506,000 people. The Wellington Province has a projected growth rate of 15 per cent over the next 5 years with projections showing Wellington, Porirua and Kāpiti with the highest growth rates.

Zones

Some of the zones have been gathered into groups that are characteristically similar and/or in geographic proximity to each other. Each zone in the Wellington District Fire Plan has been described either individually or as a group of zones. The Wellington District fire plan area has 13 zones.

[Wellington Province](#) being broken into four zones.

- Wellington
- Hutt Valley
- Porirua
- Kapiti

The Wellington Zones have been created following Local Government boundaries.

The current Wellington District beach zones may appear on the current zone map but will be incorporated into the surrounding zones and managed by local councils as they see fit during the open fire seasons.

[Wairarapa Province](#) being broken into seven zones.

- Northern Coast
- Northern Central
- Inland Central
- Central Coast
- Southern Coast
- South Wairarapa
- Western Ranges

Both provinces in this fire plan have Public Conservation Land (Department of Conservation) which are controlled as a separate zone.

Each zone is described and its relevant trigger thresholds and other factors for changing fire seasons are listed in the zone information.

Further information on how Public Conservation Land is managed is described within the special risk Section on each zone.

Frequency of elevated fire danger

On average, the Wellington Province experiences:

- 3.5 of days of extreme fire danger.
- 5 of days of very high fire danger.

On average, the Wairarapa Province experiences:

- 7.1 days of extreme fire danger.
- 10.4 days of very high fire danger.

Fire danger in many parts of New Zealand is expected to increase due to higher temperatures, stronger winds, lower rainfall, and humidity associated with climate change. This fire plan considers this trend in very-high and extreme fire danger by monitoring information gathered from the relevant Remote Automated Weather

Station (RAWS) sites. The Wellington Province is very likely to experience decreasing fire danger, while the Wairarapa Province is very likely increasing. By 2090, the area is projected to have from 6 to 40 extra days per year where maximum temperatures exceed 25°C.

Wellington District Fire history

The known fire history for this district for wildfires or fires caused by activities regulated by our fire control powers includes but not limited to:

Year	Fire	Cause
2001	Avro Road * (16ha)	Arson
2006	Maringi *(200ha)	Chainsaw
2007	Waipuna * (5ha)	Powerlines in trees
2008	Kaikuri Two* (38ha)	Arson
2010	Whitrea Park (30ha)	Arson
2011	Young* (15ha)	Powerlines in trees
2013	Wire* (9ha)	Possible arson
2013	Kaikuri Three* (230ha)	Arson
2015	Whatarangi (45ha)	Mower strike
2015	Erindale* (38ha)	Chainsaw
2015	Whareama *(200ha)	Chainsaw
2015	Brookfield Lane	Beekeeper
2017	Castle Hill	Slash Burns
2020	Castle Hill	Slash Burns
2021	Palliser (21ha)	Camp Fire
2022	Evergreen (14ha)	Self-heating of vegetation

*Fires within a large area of commercial forests.

Schedule of stakeholders

This schedule of stakeholders includes those who should be involved in the creation of these fire plans and their amendments or consulted before making use of the powers of section 52 of the Fire and Emergency New Zealand Act 2017 or notified when this happens. Zone-level stakeholders are listed with each zone description.

When we say...	What we mean is...
Consult while amending plan	You will have the opportunity for input into the fire plan before it is released for public consultation. Can include workshops and other opportunities to contribute. Note: not all or any inputs are guaranteed to be used. Fire and Emergency NEW ZEALAND reserves the right to determine the best outcome for all communities.
Public consultation	You will have the opportunity to comment during the 4-week public consultation period.
Consult during decision making	The plan to change to a prohibited fire season or use section 52 will be discussed with you before it is implemented.
Notify of decision	You will be contacted directly when there is a change to a prohibited fire season, or when section 52 is implemented.
Notify using public channels	You will find out about the change in fire season etc. the same way as other members of the public.

National-level stakeholders

Stakeholders who have an interest in this fire plan area but are managed at national level.

Stakeholder	Fire plan development	Fire plan amendment	Changing fire season to prohibited	Section 52 fire prohibitions	Section 52 restrictions/prohibitions on activities
Department of Conservation	Consulted while creating plan	Consult while amending plan	Consult during decision making	Consult during decision making	Consult during decision making
NZ Defence Force	Consulted while creating plan	Consult while amending plan	Consult during decision making	Consult during decision making	Consult during decision making
Environmental Protection Authority	Consulted while creating plan	Consult while amending plan	Notify using public channels	Notify using public channels	Notify using public channels
Federated Farmers NZ	Public consultation	Consult while amending plan	Consult during decision making	Consult during decision making	Consult during decision making
Land Information NZ	Consulted while creating plan	Consult while amending plan	Notify using public channels	Notify using public channels	Notify using public channels

Stakeholder	Fire plan development	Fire plan amendment	Changing fire season to prohibited	Section 52 fire prohibitions	Section 52 restrictions/prohibitions on activities
Taituarā - Local Govt Professionals Aotearoa (SOLGM)	Consulted while creating plan	Consult while amending plan	Notify using public channels	Notify using public channels	Notify using public channels
Local Government NZ	Consulted while creating plan	Consult while amending plan	Notify using public channels	Notify using public channels	Notify using public channels
Forest Owners Association	Consulted while creating plan	Consult while amending plan	Consult during decision making	Consult during decision making	Consult during decision making
Ministry for Primary Industries - Te Uru Rākau and Crown Forestry	Consulted while creating plan	Consult while amending plan	Notify of decision	Notify of decision	Consult during decision making
NZ Farm Forestry Association	Public consultation	Consult while amending plan	Consult during decision making	Consult during decision making	Consult during decision making
Te Puni Kōkiri	Public consultation	Consult while amending plan	Notify using public channels	Notify using public channels	Notify using public channels
Ngā Whenua Rāhui	Public consultation	Consult while amending plan	Notify using public channels	Notify using public channels	Notify using public channels
Waka Kotahi NZ Transport Agency	Public consultation	Consult while amending plan	Notify using public channels	Notify using public channels	Consult during decision making
Ngā Pirihimana O Aotearoa New Zealand Police	Public consultation	Public consultation	Notify of decision	Notify using public channels	Notify using public channels

If your organisation should be involved in fire plans at a national level, please contact us.

Area-level and zone-level stakeholders

This list is for stakeholders who have an interest in the fire plan area or in specific zones. Fire and Emergency undertakes to consult as indicated for each zone's stakeholders.

Stakeholder	Fire plan development	Fire plan amendment	Changing fire season to prohibited	Section 52 fire prohibitions	Section 52 restrictions/prohibitions on activities
Department of Conservation	Consult while creating plan	Consult while amending plan	Notify of decision	Notify using public channels	Notify using public channels
NZ Defence Force (if present in area)	Consult while creating plan	Consult while amending plan	Notify of decision	Notify using public channels	Notify using public channels
JNL New Zealand.	Consult while creating plan	Consult while amending plan	Notify of decision	Notify using public channels	Notify using public channels
Forest Enterprises	Consult while creating plan	Consult while amending plan	Notify of decision	Notify using public channels	Notify using public channels
Forest 360	Consult while creating plan	Consult while amending plan	Notify of decision	Notify using public channels	Notify using public channels
PF Olsen	Consult while creating plan	Consult while amending plan	Notify of decision	Notify using public channels	Notify using public channels
Kāpiti Coast District Council	Consult while creating plan	Consult while amending plan	Notify of decision	Notify using public channels	Notify using public channels
Porirua City Council	Consult while creating plan	Consult while amending plan	Notify of decision	Notify using public channels	Notify using public channels
Wellington City Council	Consult while creating plan	Consult while amending plan	Notify of decision	Notify using public channels	Notify using public channels
Hutt City Council	Consult while creating plan	Consult while amending plan	Notify of decision	Notify using public channels	Notify using public channels
Upper Hutt City Council	Consult while creating plan	Consult while amending plan	Notify of decision	Notify using public channels	Notify using public channels

Stakeholder	Fire plan development	Fire plan amendment	Changing fire season to prohibited	Section 52 fire prohibitions	Section 52 restrictions/prohibitions on activities
Greater Wellington Regional Council	Consult while creating plan	Consult while amending plan	Notify of decision	Notify using public channels	Notify using public channels
Federated Farmers of New Zealand	Consult while creating plan	Consult while amending plan	Notify of decision	Notify using public channels	Notify using public channels
John Turkington Ltd	Consult while creating plan	Consult while amending plan	Notify of decision	Notify using public channels	Notify using public channels
NZ Farm Forestry Association	Consult while creating plan	Consult while amending plan	Notify of decision	Notify using public channels	Notify using public channels
Apiculture	Consult while creating plan	Consult while amending plan	Notify of decision	Notify using public channels	Notify using public channels
Muaūpoko	Consult while creating plan	Consult while amending plan	Notify of decision	Notify using public channels	Notify using public channels
Ngāti Raukawa ki te Tonga	Consult while creating plan	Consult while amending plan	Notify of decision	Notify using public channels	Notify using public channels
Ngāti Toa Rangatira	Consult while creating plan	Consult while amending plan	Notify of decision	Notify using public channels	Notify using public channels
Te Ātiawa ki Whakarongotai	Consult while creating plan	Consult while amending plan	Notify of decision	Notify using public channels	Notify using public channels
Te Ātiawa (Wellington)	Consult while creating plan	Consult while amending plan	Notify of decision	Notify using public channels	Notify using public channels
Taranaki Whānui ki te Upoko o Te Ika	Consult while creating plan	Consult while amending plan	Notify of decision	Notify using public channels	Notify using public channels
Masterton District Council	Consult while creating plan	Consult while amending plan	Notify of decision	Notify using public channels	Notify using public channels
Carterton District Council	Consult while creating plan	Consult while amending plan	Notify of decision	Notify using public channels	Notify using public channels
South Wairarapa District Council	Consult while creating plan	Consult while amending plan	Notify of decision	Notify using public channels	Notify using public channels

Stakeholder	Fire plan development	Fire plan amendment	Changing fire season to prohibited	Section 52 fire prohibitions	Section 52 restrictions/prohibitions on activities
NZ Federated Farmers Wairarapa Branch	Consult while creating plan	Consult while amending plan	Notify of decision	Notify using public channels	Notify using public channels
NZ Farm Forestry Association Wairarapa Branch	Consult while creating plan	Consult while amending plan	Notify of decision	Notify using public channels	Notify using public channels
Southern North Island Forestry Council	Consult while creating plan	Consult while amending plan	Notify of decision	Notify using public channels	Notify using public channels
Juken NZ Ltd	Consult while creating plan	Consult while amending plan	Notify of decision	Notify using public channels	Notify using public channels
Forest Enterprises Ltd	Consult while creating plan	Consult while amending plan	Notify of decision	Notify using public channels	Notify using public channels
PF Olsen Ltd	Consult while creating plan	Consult while amending plan	Notify of decision	Notify using public channels	Notify using public channels
Ernslaw One Ltd	Consult while creating plan	Consult while amending plan	Notify of decision	Notify using public channels	Notify using public channels
Forest 360 Ltd	Consult while creating plan	Consult while amending plan	Notify of decision	Notify using public channels	Notify using public channels
Farman Turkington Forest Ltd	Consult while creating plan	Consult while amending plan	Notify of decision	Notify using public channels	Notify using public channels
Comvita Ltd	Consult while creating plan	Consult while amending plan	Notify of decision	Notify using public channels	Notify using public channels
Ngāti Kahungunu ki Wairarapa	Consult while creating plan	Consult while amending plan	Notify of decision	Notify using public channels	Notify using public channels
Rangitāne O Wairarapa	Consult while creating plan	Consult while amending plan	Notify of decision	Notify using public channels	Notify using public channels
Public	Public consultation	Public consultation	Notify of decision	Notify using public channels	Notify using public channels

If your organisation should be involved in fire plans and has an interest across the whole fire plan area or in a specific zone, please contact us about being added to this list.

Zone information for the Wellington District

Wellington Province

Geography

Wellington is the capital city of New Zealand. It is located at the south-western tip of the North Island, between Cook Strait and the Remutaka Range, with Kāpiti Coast to the north. On the east, the Remutaka Range divides Wellington from the broad plains of the Wairarapa.

Wellington is the major population centre of the southern North Island and is the administrative centre of the Wellington District fire plan area.

The Wellington Province is characterised by steep hills covered in vegetation, interspersed with narrow streets with tightly packed wooden homes.

Wellington is more densely populated than most other cities in New Zealand due to the restricted amount of land that is available between its harbour and the surrounding hills. It has very few open areas in which to expand, and this has brought about the development of the suburban towns.

The Wellington Province contains a significant area of Public Conservation Land with 500 square kilometres of regional parks and forests.

The Wellington Harbour has three islands:

- Matiu/Somes Island
- Mākaro/Ward Island
- Mokopuna Island

Only Matiu/Somes Island is large enough for habitation.

The Wellington Province also incorporates Kapiti Island and Mana Island.

Demographics

Demographics help us understand how our communities use fire, and the type of support they might need and how we communicate with them.

Each city contains a large residential community with diverse demographics.

Wellington City has a disproportionate number of people in their 20's and 30's when compared to the rest of the region. Residents living in the central city area are the best educated and highest paid, compared to the rest of the country.

The Porirua basin is undergoing rapid growth with large areas of new housing and extensive subdivisions underway, including commercial subdivisions. In contrast to this, there are large concentrations of state housing containing at risk groups.

When compared to the rest of the province, there is a significant proportion of children making up the population of Porirua city.

Kāpiti Coast District contains the largest proportion of 65+ year old in the Wellington Province with a projected increase of 21 per cent in this group over the next 15 years. The demographic profile also shows an unusual situation in that it already has more elderly than children (0-14).

The Hutt Valley is a large spread-out area that consists of a coastal influence from the Wairarapa Province boundary in the south to the Petone foreshore within Wellington Harbour and to the summit of the Remutaka road in the north and consists of, inland valleys, and steep hilly terrain. The Hutt Valley has several larger towns and cities including Upper Hutt, Lower Hutt and Wainuiomata. It also has a

large and diverse population which includes the Trentham military camp and the Rimutaka prison. The Hutt Valley is undergoing both residential and commercial growth along with large areas of Urban/Rural interface and lifestyle blocks being developed. The surrounding fuel types consist of varying vegetation from coastal scrub to gorse, native bush, and commercial exotic forests. A large amount of residential housing has been and is still being built within the bush areas. There are some areas of the Hutt Valley that have limited or time-consuming access for fire appliances such as the coast road south of Wainuiomata, coastal areas south of Eastbourne and the Akatarawa Valley north of Upper Hutt.

Due to COVID-19, recreational areas that were previously infrequently visited have had a significant increase whilst international travel was unavailable. This trend has continued locally in spite international travel now being once again available.

Note: At the time of writing this plan, current Census data had not been released.

This table shows the changes in population over 14 years giving both a total change and an annualised rate.

Territorial Local Authority	Dep Index 2018	Population						
		2006	2013	2018	Est. 2020	Growth 2006-2020	Growth 2006-2020 %	Annual Growth %
Upper Hutt City	5.4	38,675	40,462	44,303	47,388	8,713	22.53%	1.61%
Lower Hutt City	6.6	97,567	98,144	104,383	111,645	9,853	10.10%	0.72%
Kapiti Coast District	5.1	46,200	49,104	53,673	55,503	9,303	20.3%	1.45%
Porirua City	5.1	48,546	51,717	56,559	60,600	12,054	19.55%	1.39%
Wellington City	4.5	179,462	190,899	202,693	216,095	13,406	7.47%	0.53%

The next two tables identify Ethnicity and Age. Note: the below data is obtained from the 2018 Census data.

Territorial Local Authority	URP Census 2018	European NZ %	Māori %	Pacific %	Asian %	All Other %
Upper Hutt City	44,303	82.46	15.69	5.72	8.55	3.11
Lower Hutt City	104,383	68.68	18.42	11.52	15.14	3.35
Kapiti Coast District	54,815	89.10	14.77	2.93	4.57	2.42
Wellington City	202,693	75.29	8.60	5.15	18.33	4.68
Porirua City	56,282	62.70	22.39	26.43	8.69	2.89

Note: Some percentages will total more than 100%, this is due to people identifying with more than one ethnicity.

Territorial Local Authority	Deprivation Index Census 2018	URP Census 2018	Age 0 to 9 %	Age 10 to 19 %	Age 20 to 64 %	Age 65 Over %
-----------------------------	-------------------------------	-----------------	--------------	----------------	----------------	---------------

Upper Hutt City	5.4	44,303	13.07	12.75	58.86	15.14
Lower Hutt City	6.6	104,383	13.73	12.72	59.86	13.49
Kapiti Coast District	5.1	54,815	11.24	11.54	51.03	26.05
Wellington City	4.5	202,693	10.64	12.69	66.09	10.59
Porirua City	7.3	56,282	16.22	14.51	57.81	11.51

Climate/weather The Wellington Province can be adversely affected by the varying weather patterns. The Western Zones can be affected by the North-western summer wind flow and the Southern Zones effected by the southern coastal weather patterns.

Because of its location in the Roaring Forties and its exposure to the winds blowing through Cook Strait, Wellington is the world's windiest city, with an average wind speed of 27 km/h.

The climate and weather of the Wellington Province is strongly influenced by the presence of Cook Strait and the rugged local topography. In general, the climate of the region reflects the general disturbed westerly flow with interspersed anticyclones, modified in specific places by the local topography. Wind conditions are the strongest around the southwestern tip of the region. The region as a whole is generally sunny and windy compared with other parts on New Zealand.

A marked reflection of the wind regime over the southwest part of the region is shown by the permanent eastward lean of much of the larger vegetation on exposed hillslopes and ridgetops.

Temperatures in the Wellington province varies strongly with elevation. Low lying areas around the coast have a median annual temperature of around 13.5°C where the air temperatures are significantly cooler higher in the Tararua and Remutaka Ranges.

Land cover/land use The topography of the Wellington, Porirua, Kāpiti, Hutt Valley zone consist of coastal, plains, rugged hill country and mountain ranges.

Wellington is more densely populated than most other cities in New Zealand due to the restricted amount of land between its harbour and the surrounding hills.

The Wellington Province has a mix of both dense and sparsely populated areas and provincial towns (Kāpiti, Porirua, Hutt Valley) are seeing considerable growth.

It has very few open areas in which to expand and this has brought about the development of the suburban towns.

The geography is complex in that it is divided into two distinct geographical areas by the Remutaka and Tararua Ranges.

There are large areas of Public Conservation Land managed by Department of Conservation.

There are large areas of commercial forest among the more inaccessible areas of the Wellington district, with a large portion of them being owned by the Wellington Regional Council.

Wellington Regional Council have recently retired several formally sheep and beef farms to return to native forest parks. These parks will be open to the public and with the increased grass growth there will be an increase in the fire risk during the drier

months. Wellington Regional Council have been working with Fire and Emergency to mitigate the risks and establish trigger points for limited public access and/or park closures during very high or extreme fire danger.

Gorse and broom are predominant on the low-lying hills on the southern point of the Wellington coast and the eastern hills in the Hutt Valley.

The Public Conservation Land and areas of exotic forest usually have limited access.

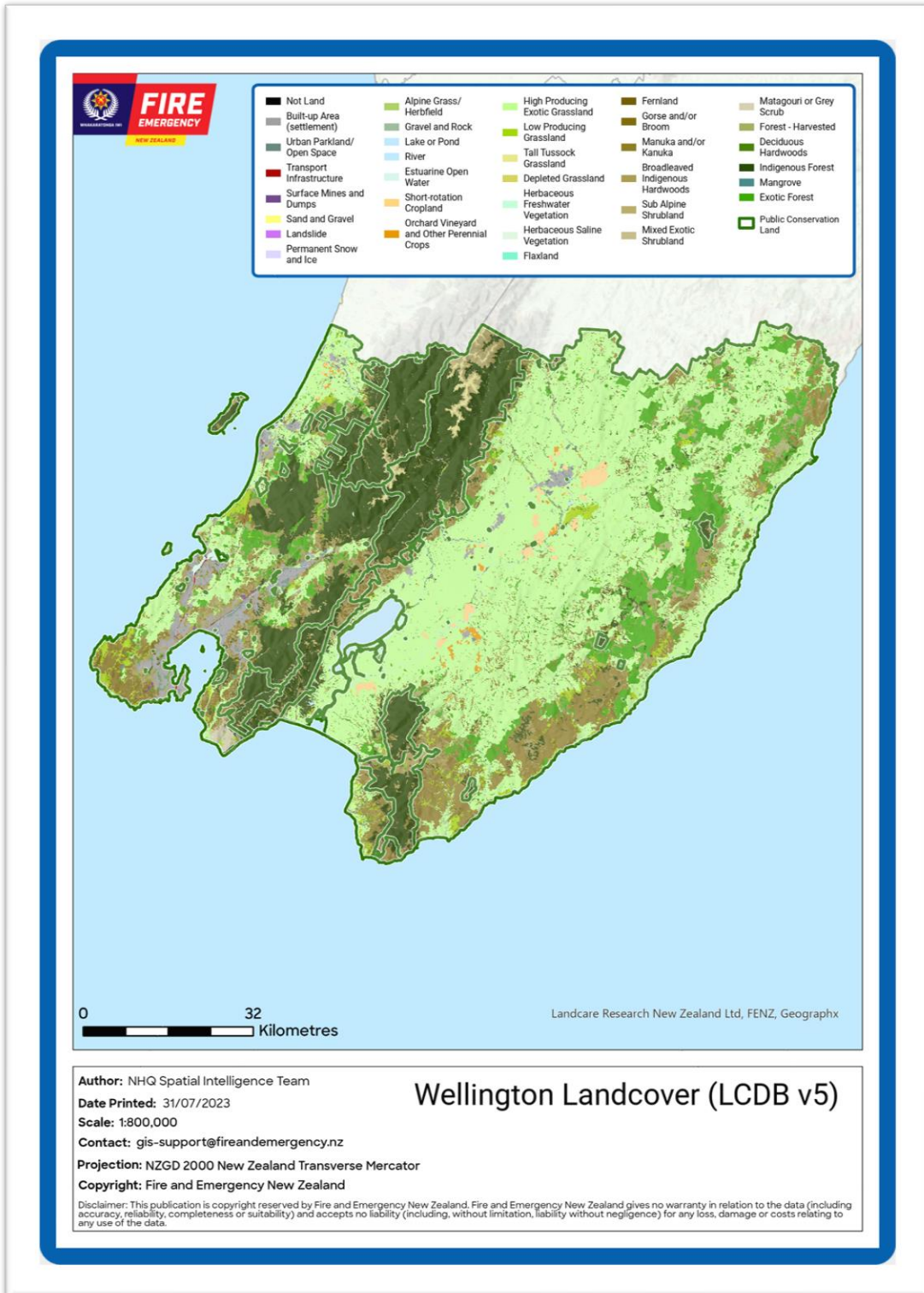
Coastal areas are low-lying, and the predominant use is farming with high producing exotic grassland and areas for orchard or other perennial crops.

The Land cover map lists the land cover classification types.

Access within the western hill country is difficult, with some areas being very remote.

DRAFT FOR
CONSULTATION

Wellington District Landcover Map



Industry	Industry	Contributes to increased risk of fire in high risk conditions	Affected by use of fire control measures	Needs to be protected by using fire control measures
	Primary production, including horticulture and agriculture <ul style="list-style-type: none"> • use of machinery – sparks • use of fire for land management • relevant operations affected 	☒	☒	☒
	Forestry <ul style="list-style-type: none"> • use of machinery – sparks • relevant operations affected • Use of firebreaks 	☒	☒	☒
	Apiculture (beekeeping) <ul style="list-style-type: none"> • Use of smoke • Use of fire to destroy infested hives • Impacted by restrictions on activities for suppliers 	☒	☒	☐
	Tourism and recreation <ul style="list-style-type: none"> • People unfamiliar with local fire risk and rules • Access to locations may be restricted 	☒	☒	☒
Lifeline utilities/other infrastructure	Lifeline utility/ other infrastructure	Contributes to increased risk of fire in high risk conditions	Affected by use of fire control measures	Needs to be protected by using fire control measures
	Electricity transmission lines <ul style="list-style-type: none"> • Sparking during high winds • Use of auto-reclosers limited in high fire danger • Recommended vegetation mitigation practices 	☒	☒	☐
	Railway line <ul style="list-style-type: none"> • Sparks from passing trains and during track maintenance 	☒	☒	☐
	Roading network <ul style="list-style-type: none"> • Sparks from vehicle malfunction, discarded cigarettes • Spark causing activities during road maintenance and mowing 	☒	☒	☐
	Natural gas distribution network <ul style="list-style-type: none"> • Gas leaks 	☒	☒	☒

<ul style="list-style-type: none"> Protected by own controls on use of fire and other activities in vicinity 			
Wellington International Airport <ul style="list-style-type: none"> Requirement for notification and permission for burns in flight path, under CAA rules Protected by own controls on use of fire and other activities in vicinity 	<input type="checkbox"/>	<input checked="" type="checkbox"/>	<input type="checkbox"/>
Telecommunications network <ul style="list-style-type: none"> Protect by applying controls to surrounding areas 	<input type="checkbox"/>	<input type="checkbox"/>	<input checked="" type="checkbox"/>

Recreational locations

Recreational activities including mountain biking, large public events, walkways and parks will be assessed as part of the risk profiling for setting controls.

Cultural and recreational activities and events

Tangata whenua have very strong ties to their whenua (land) and culture, and value being able to use their whenua without unnecessary restrictions.

We will consult with tangata whenua and consider the needs of iwi when making decisions about implementing restrictions or prohibitions with our fire control powers. The relevant iwi for this zone is listed as stakeholders.

Large scale events that might be cancelled because a restriction on activities can have a significant economic impact.

Placing restrictions or prohibitions on fire hazardous activities should not impose any unreasonable restrictions on people living and enjoying recreational activities in this zone.

Cultural and recreational activities and events	Contributes to increased risk of fire in high-risk conditions	Affected by use of fire control measures	Needs to be protected by using of fire control measures
Cultural cooking, e.g. Hāngī	<input checked="" type="checkbox"/>	<input type="checkbox"/>	<input type="checkbox"/>
Fireworks <ul style="list-style-type: none"> Use may be prohibited during high fire danger Pyrotechnics managed by other approvals 	<input checked="" type="checkbox"/>	<input checked="" type="checkbox"/>	<input type="checkbox"/>
Hunting <ul style="list-style-type: none"> Campfires Access may be restricted during high fire danger Hunters singeing pigs Use of off-road vehicles – hot exhausts in long grass 	<input checked="" type="checkbox"/>	<input checked="" type="checkbox"/>	<input checked="" type="checkbox"/>
Steam train excursions <ul style="list-style-type: none"> Sparks from passing trains and during tack maintenance 	<input checked="" type="checkbox"/>	<input type="checkbox"/>	<input checked="" type="checkbox"/>

Mountain biking, horseriding, back country running • Access may be restricted during high fire danger	<input type="checkbox"/>	<input checked="" type="checkbox"/>	<input type="checkbox"/>
• Campfires • Increase in people without knowledge of fire risk or rules	<input checked="" type="checkbox"/>	<input checked="" type="checkbox"/>	<input checked="" type="checkbox"/>

Special risk areas

Special risk area	Contributes to increased risk of fire in high-risk conditions	Affected by use of fire control measures	Needs to be protected by using of fire control measures
Coastal areas with limited or no access • Escaped campfires	<input checked="" type="checkbox"/>	<input type="checkbox"/>	<input checked="" type="checkbox"/>
Hazardous class 3 products storage in Seaview • Protected by own controls on use of fire and other activities in vicinity	<input checked="" type="checkbox"/>	<input checked="" type="checkbox"/>	<input checked="" type="checkbox"/>
Public Conservation Land • Ecological values at risk • Maintained in restricted season year-round (own zone)	<input checked="" type="checkbox"/>	<input checked="" type="checkbox"/>	<input checked="" type="checkbox"/>
Gorse and broom in coastal areas and eastern hill country near airport flight paths • Factor into decision-making for fire seasons etc	<input checked="" type="checkbox"/>	<input checked="" type="checkbox"/>	<input checked="" type="checkbox"/>
Kāpiti Island • Wildlife sanctuary	<input checked="" type="checkbox"/>	<input checked="" type="checkbox"/>	<input checked="" type="checkbox"/>
Zealandia • Wildlife sanctuary	<input checked="" type="checkbox"/>	<input checked="" type="checkbox"/>	<input checked="" type="checkbox"/>
Matiu/Somes, Mākaro/Ward and Mokopuna Islands • Wildlife sanctuary	<input checked="" type="checkbox"/>	<input checked="" type="checkbox"/>	<input checked="" type="checkbox"/>
Mana Island	<input checked="" type="checkbox"/>	<input checked="" type="checkbox"/>	<input type="checkbox"/>

Public Conservation Land (PCL) or other land managed by Department of Conservation (DOC) is classified as a separate zone. Public Conservation Land is predominantly located within the Remutaka and Tararua Ranges

Smaller areas are also identified through other zones within the fire plan area including all the islands. These areas are managed by DOC and remain in a restricted season even when the rest of the zones go to an open fire season but will join the surrounding zone when it goes to a prohibited fire season.

Known fire hazards

There are no long-term fire hazards listed in this zone in the Fire Hazard Removal Case Management System.

Frequency of elevated fire danger

On average, the Wellington Province experiences:

- 3.5 of days of extreme fire danger.
- 5 of days of very high fire danger.

Fire danger in many parts of New Zealand is expected to increase due to higher temperatures, stronger winds, lower rainfall, and humidity associated with climate change. This fire plan considers this trend in very high and extreme fire danger by site.

Wellington Province Fire history

The known fire history for this region for wildfires or fires caused by activities regulated by our fire control powers includes, but not limited to:

Year	Fire	Cause
2001	Avro Road * (16ha)	Arson
2010	Whitrea Park (30ha)	Arson
2015	Brookfield Lane	Beekeeper
2022	Evergreen (14ha)	Self-heating of vegetation

*Fire within large area of commercial forest.

Predominant fuel type

The predominant fuel type in this province includes grazing grass lands, exotic forest, gorse and regenerating native forest with large areas of steep scrub covered hills.

The Wellington Province has grasslands to the north with exotic forests in the central region and steep scrub cover hills to the south. The Wellington Province has been divided into four smaller fire permitting zones to accommodate the varying fuel types and climatic conditions and enable better management of fire seasons.

We can use the same Fire Weather System trigger thresholds for prohibiting fires in the open air under section 52 as we do for changing to a prohibited fire season but use section 52 when the fire risk conditions are not expected to last long enough to make changing to a prohibited fire season practical.

Local voluntary thresholds have been introduced.

Wairarapa Province

Geography

The Wairarapa Province is located on the southeast of New Zealand's North Island, between the boundaries of Wellington Province, the Tararua District and the Wairarapa coast.

Due to the favourable climate, the land is used intensively for agriculture, horticulture/viticulture, particularly within the Ruamāhanga Valley, resulting in high economic importance in the area.

The eastern hill country supports sheep and beef farming and vast commercial forestry. Access within the eastern hill country is restricted, with some areas being very remote. Some access roads within the Wairarapa are heavily impacted by very regular use of logging trucks and also by weather events.

The entire province has a mixture of both dense and sparsely populated areas. Major transport routes dissect the province including State Highways 2, 52 and 53, as well as the East Coast Rail link.

Demographics

Demographics help us understand how our communities use fire, and the type of support they might need and how we communicate with them.

The Wairarapa Province has undergone considerable development, with new vineyards, olive groves and lifestyle blocks featuring, due to the province being one of the fastest growing fruit and grape growing areas within the country.

Several sheep and beef farms have recently been sold and converted into carbon credit radiata forests. These farms having been fertilized over many years to promote grass growth will continue to grow grass unrestricted until the trees can establish. The trees planted for carbon credits are not managed as trees for conventional forests, therefore are not pruned or thinned, this with the initial grass growth will increase the risk of rapidly moving fires in the drier seasons.

Within all seven Wairarapa zones, there are many lifestyle blocks and small communities with populations ranging from about one hundred people up to one thousand seven hundred.

Larger towns in the Wairarapa are Masterton, Featherston, Carterton, Greytown, and Martinborough.

Due the attractiveness of the more remote coastal settlements and areas of the Wairarapa the population increases dramatically during holiday times, especially hotter and dryer seasons. These settlements and areas can be completely isolated after severe weather events.

This table shows the changes in population over 14 years giving both a total change and an annualized rate.

		Population						
Territorial Local Authority	Depr Index 2018	2006	2013	2018	2020	Growth 2006-2020	Growth 2006-2020 %	Annual Growth %
Masterton District	7.0	23,505	24,380	26,731	28,790	5,285	22.48	1.61
Carterton District	5.0	6,194	7,132	7,964	8,610	2,416	39.01	2.79
South Wairarapa District	4.8	29,699	31,512	34,695	37,400	7,701	25.93	1.85

The next two tables identify Ethnicity and Age.

Note: the data below is obtained from the 2018 Census data.

Territorial Local Authority	URP Census 2018	European NZ %	Māori %	Pacific %	Asian %	All Other Ethnicities %
Masterton District	26,731	86.30	20.80	3.90	3.80	1.70
Carterton District	7,964	92.60	13.80	2.10	2.30	1.80
South Wairarapa District	10,567	92.08	14.19	2.11	2.61	2.08

Territorial Local Authority	URP Census 2018	Age 0-9 %	Age 10-19 %	Age 20-64 %	Age 65 Over %
Masterton District	26,731	12.70	12.90	53.60	20.40
Carterton District	7,964	12.00	12.30	52.30	24.20
South Wairarapa District	10,567	12.43	10.64	55.53	21.99

Note: Some percentages will total more than 100%, this is due to people identifying with more than one ethnicity.

Climate/weather

The fire weather for this area varies considerably from north to south, and east to west. With the predominant north-western flow having a major impact. The Western Ranges Zone consists mainly of Public Conservation Land and a smaller amount of farmland in the foothills. This zone usually has a higher annual rainfall than the rest of the province.

The topography and geographical location of the province determine both the climatic conditions and the general fire risk. The Wairarapa has the fourth highest fire climate severity in New Zealand.

The topography of the Wairarapa Province consists of plains, rugged hill country and mountain ranges. Lying to the east of mountain ranges that rise to heights of over 1,500 metres, the whole province is on the leeward side for the predominantly westerly winds that flow over the North Island. This causes a hot dry föhn effect to be experienced within the province. The result is a sunny climate with warm summers and mild winters. Variations in topography and geographical location means the province experiences wide-ranging differences in climatic conditions.

This in turn will be further influenced by variations in the vegetation cover and other influences on the fire environment.

The variability in rainfall in the spring to autumn seasons gives rise to mixed rural fire seasons between periods of lush growth and moisture deficits that can lead to drought conditions. A dry spell in extreme cases can last for several months.

During periods of strong west to north-west flow over the North Island, the winds across the province lowlands will be warm, dry föhn winds. In extreme cases, temperatures may be 27 – 40°C with a relative humidity of 10 - 30 percent. The province averages 2,100 hours of sunshine annually.

As a popular holiday and tourist area, the population in the rural area increases quite dramatically during summer with tourists visiting the countryside and using

nature trails, walkways and cycle routes, river and beach areas and camping sites, etc.

Scientific predictions have been factored into this fire plan with consideration given to the projected climate change implications.

The length of wet spells is projected to decrease in general, and consequently the length of dry spells is projected to increase due to higher temperatures, stronger winds, and lower rainfall and humidity associated with climate change.

Land cover/ land use

Due to the favourable climate, the land is used intensively for agriculture, horticulture and viticulture, particularly within the Ruamāhanga Valley, resulting in high economic importance in the area.

The eastern hill country supports sheep and beef farming and large areas of forestry. The [Wellington District land cover](#) map shows the land cover classification types.

Access within the eastern and western hill country is restricted, with some areas being very remote.

Industry

Industry	Contributes to increased risk of fire in high-risk conditions	Affected by use of fire control measures	Needs to be protected by using fire control measures
Primary production, including horticulture and agriculture <ul style="list-style-type: none"> • use of machinery – sparks • use of fire for land management • relevant operations affected • burning of waste and rubbish 	☒	☒	☒
Forestry <ul style="list-style-type: none"> • use of machinery – sparks • relevant operations affected • Use of firebreaks 	☒	☒	☒
Apiculture (beekeeping) <ul style="list-style-type: none"> • Use of smoke • Use of fire to destroy infested hives • Impacted by restrictions on activities for suppliers 	☒	☒	☐
Tourism and recreation <ul style="list-style-type: none"> • People unfamiliar with local fire risk and rules • Access to locations may be restricted 	☒	☒	☒

Lifeline utilities/other infrastructure	Lifeline utility/ other infrastructure	Contributes to increased risk of fire in high-risk conditions	Affected by use of fire control measures	Needs to be protected by using fire control measures
	Electricity transmission lines <ul style="list-style-type: none"> Sparking during high winds Use of auto-reclosers limited in high fire danger Recommended vegetation mitigation practices 	☒	☒	☐
	Railway line <ul style="list-style-type: none"> Sparks from passing trains and during track maintenance 	☒	☒	☐
	Roothing network <ul style="list-style-type: none"> Sparks from vehicle malfunction, discarded cigarettes Spark causing activities during road maintenance and mowing 	☒	☒	☐
	Telecommunications network <ul style="list-style-type: none"> Protect by applying controls to surrounding areas 	☐	☐	☒

Recreational locations

There are currently no Wairarapa recreational locations that are affected by Fire and Emergency NZ exercising its fire control powers that are managed differently within its zones.

Recreational activities including mountain biking, large public events, walkways, and parks will be assessed as part of the risk profiling for setting controls.

Cultural and recreational activities and events

Tangata whenua have very strong ties to their whenua (land) and culture, and value being able to use their whenua without unnecessary restrictions.

We will consult with tangata whenua and consider the needs of iwi when making decisions about implementing restrictions or prohibitions with our fire control powers. The relevant iwi for this zone are listed as stakeholders.

Large scale events that might be cancelled because a restriction on activities can have a significant economic impact.

Placing restrictions or prohibitions on fire hazardous activities should not impose any unreasonable restrictions on people living and enjoying recreational activities in this zone.

We recognise that with mass crowd events such as air shows, festivals, outdoor concerts, and fireworks displays being held during dry seasons, there may be other factors that will also have to be included when evaluating the fire danger rating for the affected zone.

Due consideration will be given to any event, independent of size, that will be impacted by fire control powers.

Cultural and recreational activities and events	Contributes to increased risk of fire in high risk conditions	Affected by use of fire control measures	Needs to be protected by using of fire control measures
Wings over Wairarapa	<input checked="" type="checkbox"/>	<input checked="" type="checkbox"/>	<input type="checkbox"/>
Cultural cooking, e.g. Hāngī	<input checked="" type="checkbox"/>	<input type="checkbox"/>	<input type="checkbox"/>
Fireworks <ul style="list-style-type: none"> Use may be prohibited during high fire danger Pyrotechnics managed by other approvals 	<input checked="" type="checkbox"/>	<input checked="" type="checkbox"/>	<input type="checkbox"/>
Hunting <ul style="list-style-type: none"> Campfires Access may be restricted during high fire danger 	<input checked="" type="checkbox"/>	<input checked="" type="checkbox"/>	<input checked="" type="checkbox"/>
Steam train excursions <ul style="list-style-type: none"> Sparks from passing trains and during tack maintenance 	<input checked="" type="checkbox"/>	<input type="checkbox"/>	<input type="checkbox"/>
Mountain biking, horseriding, back country running <ul style="list-style-type: none"> Access may be restricted during high fire danger 	<input type="checkbox"/>	<input type="checkbox"/>	<input type="checkbox"/>
Use of off-road vehicles – hot exhausts in long grass	<input checked="" type="checkbox"/>	<input type="checkbox"/>	<input type="checkbox"/>
<ul style="list-style-type: none"> Campfires Increase in people without knowledge of fire risk or rules 	<input checked="" type="checkbox"/>	<input checked="" type="checkbox"/>	<input checked="" type="checkbox"/>
Special risk areas			
Special risk area	Contributes to increased risk of fire in high risk conditions	Affected by use of fire control measures	Needs to be protected by using of fire control measures
Coastal areas with limited or no access <ul style="list-style-type: none"> Escaped campfires 	<input checked="" type="checkbox"/>	<input type="checkbox"/>	<input checked="" type="checkbox"/>
Public Conservation Land <ul style="list-style-type: none"> Ecological values at risk 	<input checked="" type="checkbox"/>	<input checked="" type="checkbox"/>	<input type="checkbox"/>

Known fire hazards There are no long-term fire hazards listed in this zone in the Fire Hazard Removal Case Management System.

Frequency of elevated fire danger On average, the Wairarapa Province experiences:

- 7.1 days of extreme fire danger.
- 10.4 days of very high fire danger.

Wairarapa Province Fire history

The known fire history for this zone for significant wildfires or fires caused by activities regulated by our fire control powers includes but not limited to:

Year	Fire	Cause
2006	Maringi *(200ha)	Chainsaw
2007	Waipuna * (5ha)	Powerlines in trees
2008	Kaikuri Two* (38ha)	Arson
2011	Young* (15ha)	Powerlines in trees
2013	Wire* (9ha)	Possible arson
2013	Kaikuri Three* (230ha)	Arson
2015	Whatarangi (45ha)	Mower strike
2015	Erindale* (38ha)	Chainsaw
2015	Whareama *(200ha)	Chainsaw
2017	Castle Hill	Slash Burns
2020	Castle Hill	Slash Burns
2021	Palliser (21ha)	Camp Fire

Predominant fuel type

This zone is a mixture of large and small exotic forests, grazing grasslands, cropping areas with smaller areas of scrub and coastal native grass covered sand dunes.

Because of the varying fuel types and climatic conditions, the Wairarapa has been divided into smaller fire permit zones to enable better management of fire seasons.

Thresholds

Fire seasons

For setting fire seasons, Build-up Index (BUI) is the most relevant fire weather index to monitor for where forest is the predominant fuel type.

Build Up Index (BUI)		
0-40	40-60	>60
Open	Restricted	Prohibited

When evaluating the season changes for the Wellington region the above and below tables will be assessed depending on zone location and land use.

Build-up Index (BUI) and the degree of grass curing (GC%) are the most relevant fire weather indices to monitor where there is a mixture of forestry and grasslands as the predominant fuel types.

Predominantly Grassland

Grass Curing (GC%)	Build Up Index (BUI)		
	0-40	40-60	>60
(%)			
0-50	Open	Open/Restricted	Restricted/Prohibited
50-80	Open/Restricted	Restricted	Prohibited
>80	Restricted/Prohibited	Prohibited	Prohibited

Interpreting this matrix:

Open	Open fire season
Open/Restricted	Open fire season but we may move to a restricted season earlier if forecast conditions support this.
Restricted	Restricted fire season
Restricted/prohibited	Restricted Fire Season but we may move to a prohibited season earlier if forecast conditions support this or stay in a prohibited season longer if grasses remain dry and cured.
Prohibited	Prohibited fire season

Prohibition on fires in open air (section 52)

We can use the same Fire Weather System trigger thresholds for prohibiting fires in the open air under [section 52](#) as we do for changing to a prohibited fire season but use [section 52](#) when the fire risk conditions are not expected to last long enough to make changing to a prohibited fire season practical.

Prohibitions or restrictions on activities (section 52)

Localised trigger thresholds for applying section 52 to activities have not yet been developed, however there are some local mitigations used to reduce the need to implement it.

Other local thresholds have been consulted on with stakeholders.

Voluntary restrictions on high-risk activities.

During high fire danger periods the Wellington District experiences many fires started by high-risk activities with around 80% occurring during the hottest and driest time of the day (after 2pm).

High risk activities include but are not limited to, welding, grinding in the open, mowing/slashing, fireworks and any other activity that could cause a spark or hot exhaust discharge. In this plan it is recommended that the following levels are followed. These levels can be found and followed daily through the NIWA fire weather website and checking the Wellington District. The information is updated regularly throughout the day. [FireWeather \(niwa.co.nz\)](http://FireWeather.niwa.co.nz)

Low fire danger, activities as normal.
Moderate fire danger, activities with caution.
High fire danger, carry means to extinguish a small fire and cease high-risk activities at 2pm.
Very high fire danger, no high-risk activities.
Extreme fire danger, no high-risk activities.

Means to extinguish a small fire may include but are not limited to water, hose and pump, scotty packs/manual water sprayer, hand tools such as shovels or fire extinguishers.

Forestry hot works are also voluntary restricted with the thresholds being located within the Forest Fire Management Guidelines. Local forest management companies have traditionally taken a tougher approach than the recommendations.

Forest Fire Risk Management Code level	BUI range	Fire Weather Index (FWI) code calibration of BUI range
Green	≤ 40	If FWI > 25 – elevate to Code Blue
Blue	40.1–60	If FWI > 25 – elevate to Code Yellow
Yellow	60.1–80	If FWI > 25 – elevate to Code Orange
Orange	80.1–100	If FWI > 25 – elevate to Code Red
Red	100.1– 120	If FWI > 25 – elevate to Code Purple
Purple	> 120	

Noting these are voluntary restrictions it is envisaged the majority of public will follow this, where there is an elevated risk or public are not following this advice, imposing prohibitions or restrictions on activities is a tool available to us.

DRAFT FOR CONSULTATION

National default trigger for powerline operations – two tables

Table 1: Average wind speed less than 40km/h

FFMC (hourly)	Curing percentage		
	< 50 percent	50–85 percent	> 85 percent
< 76	Level 1 – no controls	Level 1 – no controls	Level 1 – no controls
76–83	Level 1 – no controls	Level 1 – no controls	Level 1 – no controls
84–87	Level 1 – no controls	Level 1 – no controls	Level 1 – no controls
88–91	Level 1 – no controls	Level 1 – no controls	Level 1 – no controls
92–95	Level 1 – no controls	Level 1 – no controls	Level 2: <ul style="list-style-type: none"> • Agree on risk mitigation actions. • Avoid using auto-reclosers.
> 96	Level 1 – no controls	Level 2: <ul style="list-style-type: none"> • Agree on risk mitigation actions • Avoid using auto-reclosers. 	Level 2: <ul style="list-style-type: none"> • Agree on risk mitigation actions. • Avoid using auto-reclosers.

Table 2: Average wind speed above 40km/h

FFMC (hourly)	Curing percentage		
	< 50 percent	50–85 percent	> 85 percent
< 76	Level 1– no controls	Level 1 – no controls	Level 1 – no controls
76–83	Level 1– no controls	Level 1– no controls	Level 2: <ul style="list-style-type: none"> • Agree on risk mitigation actions. • Avoid using auto-reclosers.
84–87	Level 1– no controls	Level 2: <ul style="list-style-type: none"> • Agree on risk mitigation actions. • Avoid using auto-reclosers. 	Level 2: <ul style="list-style-type: none"> • Agree on risk mitigation actions. • Avoid using auto-reclosers.
88–91	Level 2: <ul style="list-style-type: none"> • Agree on risk mitigation actions. • Avoid using auto-reclosers. 	Level 2 <ul style="list-style-type: none"> • Agree on risk mitigation actions. • Avoid using auto-reclosers. 	Level 2: <ul style="list-style-type: none"> • Agree on risk mitigation actions. • Avoid using auto-reclosers.
92–95	Level 2: <ul style="list-style-type: none"> • Agree on risk mitigation actions. • Avoid using auto-reclosers. 	Level 2: <ul style="list-style-type: none"> • Agree on risk mitigation actions. • Avoid using auto-reclosers. 	Level 2: <ul style="list-style-type: none"> • Agree on risk mitigation actions. • Avoid using auto-reclosers.
> 96	Level 2: <ul style="list-style-type: none"> • Agree on risk mitigation actions. • Avoid using auto-reclosers. 	Level 2: <ul style="list-style-type: none"> • Agree on risk mitigation actions • Avoid using auto-reclosers. 	Level 2: <ul style="list-style-type: none"> • Agree on risk mitigation actions • Avoid using auto-reclosers

Representative remote automated weather stations

The Remote Automated Weather Station (RAWS) used to determine whether we have reached the trigger thresholds are.

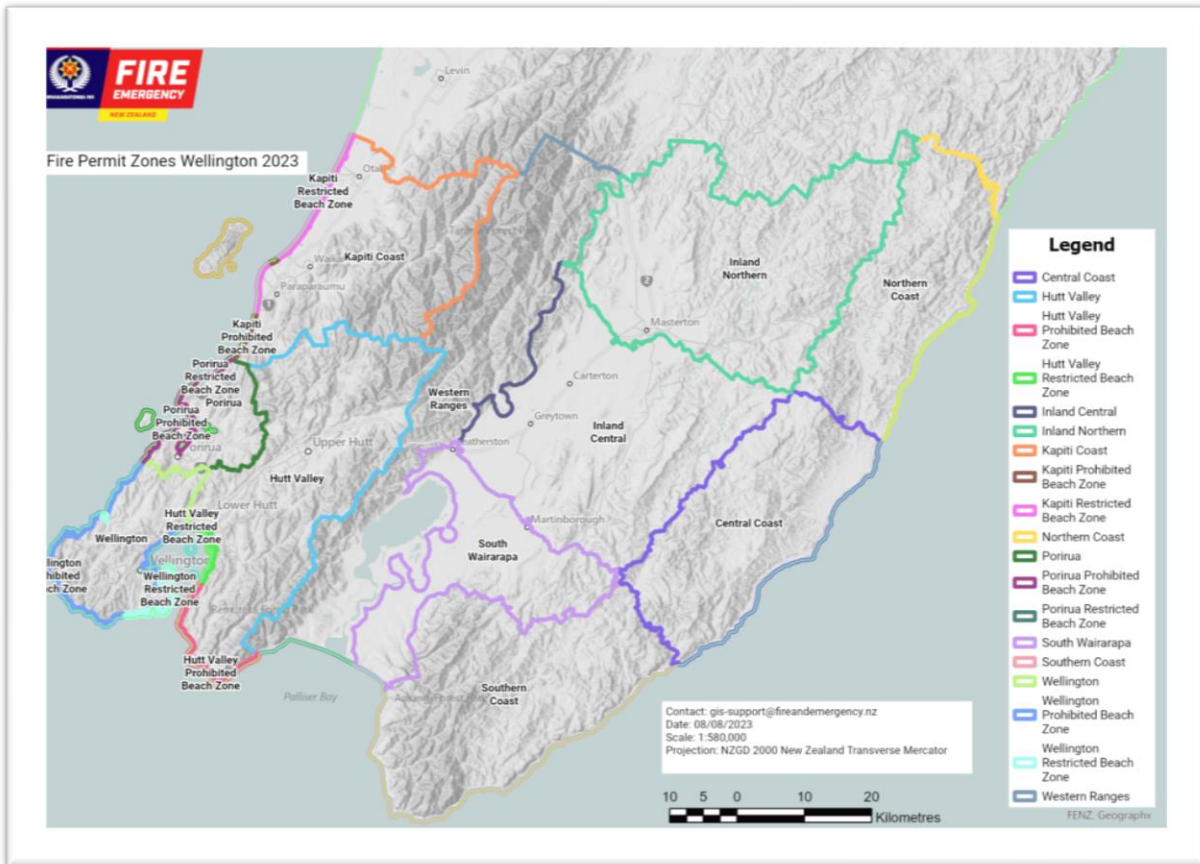
Weather Station	Location
Homebush	Masterton Hood Aerodrome
Stoney Creek	Tora fire station
Crowfoot	Castlepoint station
Haurangi	Turamgauni Forest Ngawi Road
Ngāumu	Brancepeth station Ngāumu Road
Ngawi	Ngawi township
Holdsworth	Water Treatment Plant, Upper Plaine Road, Masterton
Wellington Aero	Wellington Airfield
Te Horo	21 Mangaone North Road, Hautere
Porirua (HV)	Porirua Regional Park, Waihora Crescent, Porirua.
Remutaka Forest Park	1025 Coast Road, Wainuiomata
Belmont	Belmont Regional Park
Long Gully	Makara

We will consider the forecast for this/these location(s) when declaring or revoking a fire season.

The weather stations are maintained on a regular schedule with maintenance checks being done three monthly and a calibration test being done annually. Two of the above stations (Ngaumu and Crowfoot) are unable to be accessed during wetter periods so the schedule may at times be altered to suit.

Harvest weather keeps track of sensors that need to be replaced and advises when these replacements are due.

Zone Map



Public conservation land – [national parks etc]

Geography Public Conservation Land or other land managed by Department of Conservation (DOC) is classified as a separate zone. Public Conservation Land is predominantly located within the Remutaka, Aorangi and Tararua Ranges. Smaller areas are also identified through other zones within the fire plan area. These areas are managed by DOC and (based on current practice) will remain in a restricted season even when the rest of the zones go to an open fire season but will join the surrounding zone when it goes to a prohibited fire season.

The main Public Conservation Lands are:

- Remutaka Forest Park
- Tararua Forest Park
- Aorangi Forest Park

Climate/weather The climate and weather vary with the Remutaka and Tararua ranges receiving a relatively high rainfall and the smaller Public conservation areas to the East and West receiving less rainfall depending on either Easterly or Westerly seasonal weather patterns.

Land cover Remutaka, Tararua and Aorangi Forest Parks, and Pukaha National Wildlife Centre are predominantly indigenous vegetation (native forest). Coastal conservation sand dune areas are predominantly native grass covered.

Special risk areas	Special risk area	Contributes to increased risk of fire in high risk conditions	Affected by use of fire control measures	Needs to be protected by using of fire control measures
	Kāpiti island	<input checked="" type="checkbox"/>	<input type="checkbox"/>	<input checked="" type="checkbox"/>
	Matiu/Somes Island	<input checked="" type="checkbox"/>	<input type="checkbox"/>	<input checked="" type="checkbox"/>
	Makaro/Ward and Mokopuna Islands	<input checked="" type="checkbox"/>	<input type="checkbox"/>	<input checked="" type="checkbox"/>
	Mana Island	<input checked="" type="checkbox"/>	<input type="checkbox"/>	<input checked="" type="checkbox"/>
	Turakirae Head Scientific Reserve	<input checked="" type="checkbox"/>	<input type="checkbox"/>	<input checked="" type="checkbox"/>

Known fire hazards There are no long-term fire hazards listed in the Fire Hazard Removal Case Management System on Public Conservation Land.

Fire history The known fire history in public conservation lands zone includes:

Year	Fire	Cause
2013	Putangirua Pinnacles	Powerlines
2016	Onoke spit	Camp fire
2016	Castlepoint sand dunes	Children with matches

Thresholds

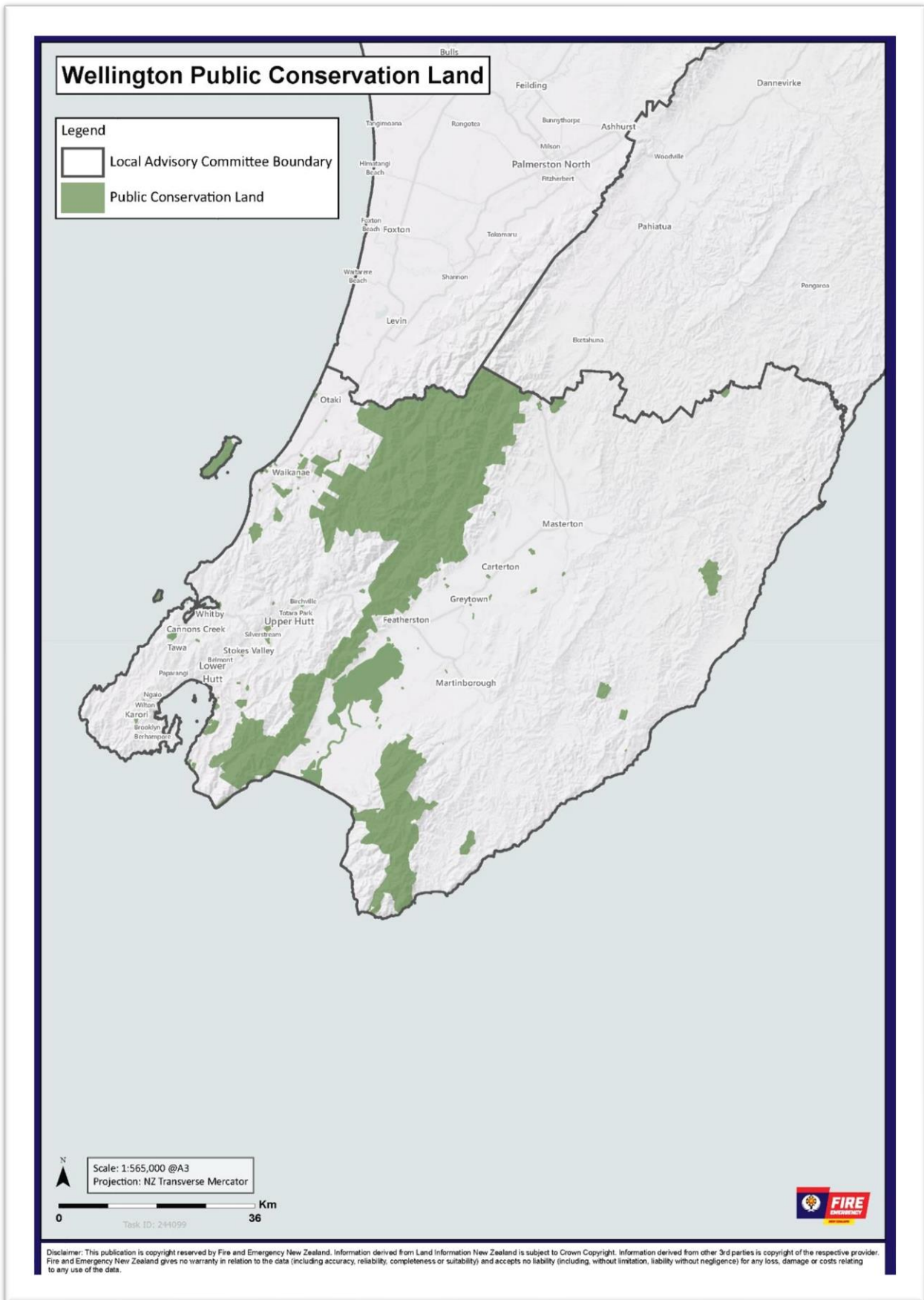
Restricted seasons year-round Due to the values at risk, Public Conservation Lands are kept in a restricted fire season when they are not in a prohibited fire season. Even when the surrounding

zone goes to an open fire season, Public Conservation Land will remain in a restricted fire season.

Thresholds for declaring or revoking a prohibited fire season are the same as the thresholds for the surrounding zone.

DRAFT FOR
CONSULTATION

Zone Map



NZ Defence Force

Scheduled Defence Areas

Fire and Emergency NZ has entered into an operational service agreement with the New Zealand Defence Force. The New Zealand Defence Force exercises fire control powers in relation to certain Defence Areas listed in a schedule to the agreement, where they have their own fire plans.

Within the Wellington District area, activities in the following Defence Areas are subject to New Zealand Defence Force fire control powers, including fire permit requirements:

- Trentham Military Camp

Any New Zealand Defence Force activities, including training activities, in other Defence Areas in Wellington are subject to Fire and Emergency NZ's fire permit requirements, though not our other fire control powers.

Further information about the boundaries of the defence areas and applicable fire controls is available through www.nzdf.mil.nz/nzdf/contact-us

DRAFT FOR CONSULTATION