

# Fire Plan for Bay of Plenty District 2024–2027



Document Title: Bay of Plenty District [info type (subject)]

Published: 22 July 2024

Document review date: February 2027

**Status of this document**

This document is issued by Fire and Emergency New Zealand.

**Recommendations for change**

The document, its content and specific processes are not to be altered except through Fire and Emergency New Zealand document management processes.

Requests or recommendations for changes to this material should be sent to District Manager Bay of Plenty District. See [Local contacts](#)

© 22 July 2024 Fire and Emergency New Zealand



## Contents

<b>Introduction</b> .....	<b>1</b>
How to use this document .....	1
Why do we have fire plans? .....	1
Content of the fire plans .....	1
Describe local fire risk conditions.....	1
Set out policy .....	2
Set out procedures .....	2
Take Fire and Emergency’s other requirements, agreements and policies into account.....	2
Cover the entire area .....	2
Set out Fire and Emergency’s fire control powers .....	2
Local area and zones .....	2
Local area .....	2
Zones .....	3
Consultation .....	3
Publish a notice .....	3
Consider submissions .....	3
Include a list of key stakeholders .....	3
Review and amendment.....	3
<b>4 Rs of emergency management</b> .....	<b>4</b>
Reduction .....	4
Readiness.....	4
Response .....	5
Recovery .....	5
<b>Our commitment to working with Māori as tangata whenua</b> .....	<b>6</b>
<b>National Framework for Fire Control</b> .....	<b>6</b>
Our policies.....	6
Fire risk conditions .....	7
<b>Fire seasons</b> .....	<b>8</b>
Open fire seasons .....	9
Restricted fire seasons .....	10
Prohibited fire seasons .....	10
Trigger thresholds for changing fire seasons .....	10
<b>Prohibiting fires in open air (section 52)</b> .....	<b>11</b>
Trigger thresholds for prohibiting fire in open air.....	11
<b>Restricting and prohibiting activities (section 52)</b> .....	<b>12</b>
Trigger thresholds for restricting or prohibiting activities under section 52 .....	12
Activities and risk mitigation .....	13
Forestry operations .....	13
Powerline auto-reclosers .....	13
Hot works .....	13
Retail fireworks and pyrotechnics.....	13
<b>Communicating changes in fire seasons and restrictions or prohibitions</b> .....	<b>14</b>

<b>Fire permits</b> .....	<b>15</b>
Council by-laws, regional plans, legal covenants, or restrictions.....	15
When a permit is needed .....	16
Fire types .....	16
Authorised fire types, descriptions and conditions in a restricted fire season.....	16
Authorised fire types on public conservation land in a restricted fire season.....	18
Authorised fire types, descriptions and conditions in a prohibited fire season .....	20
Authorised fire types on public conservation land in a prohibited fire season .....	23
Permits in prohibited fire seasons or during prohibitions under section 52 .....	23
Applying for a permit.....	23
Assessment.....	24
Mandatory conditions .....	24
<b>Firebreaks</b> .....	<b>25</b>
<b>Fire hazard removal</b> .....	<b>25</b>
Reporting fire hazards .....	26
Assessment of fire hazards.....	26
Initial review .....	26
Risk assessment matrix .....	27
Outcomes from the fire hazard assessment .....	27
Powers of entry .....	28
Fire hazard removal notice (section 65).....	28
Imminent danger notice (section 68).....	28
<b>Regulatory compliance</b> .....	<b>29</b>
Fire and Emergency's role .....	29
<b>Contact Fire and Emergency</b> .....	<b>29</b>
General enquiries and questions.....	29
Lodge a complaint .....	29
Fire hazards .....	29
Local contacts for this plan.....	30
<b>Glossary</b> .....	<b>30</b>
<b>Bay of Plenty District information</b> .....	<b>32</b>
<b>Area overview</b> .....	<b>33</b>
Schedule of stakeholders .....	35
National-level stakeholders.....	35
Area-level stakeholders.....	37
<b>Zone information</b> .....	<b>41</b>
Bay of Plenty (BOP) Coastal Zone.....	41
Thresholds .....	47
Bay of Plenty (BOP) Coastal Zone Map.....	49
Bay of Plenty (BOP) Lakes Forest Zone .....	50
Thresholds .....	56
Bay of Plenty (BOP) Lakes Forest Zone map.....	58
Bay of Plenty (BOP) Hinterland Zone.....	59
Thresholds .....	63
Bay of Plenty (BOP) Hinterland Zone Map.....	65

Public Conservation Land and Additional Lands .....66  
    Thresholds .....67  
Public conservation land and additional lands map .....68  
Forestry zone .....69  
    Thresholds .....69  
Forestry Zone map.....70  
Appendix A- Plantation forestry rural fire control charter .....71

**Document drafting information.**

Owner	Region Manager, Ngā Tai ki te Puku
Steward	District Manager, Bay of Plenty
Last reviewed	15/07/2024
Review period	Every three years

**Record of amendments**

Version	Date	Brief description of amendment
V 1.0	28 April 2021	Issued for public consultation
V 2.0	30 July 2021	Public consultation feedback incorporated and published. Plan approved for use.
V 3.0	15 February 2024	Revisions and updates Issued for public consultation
V 4.0	22 July 2024	Public consultation feedback incorporated and published. Plan approved for use

**Approval**

Full Name: David Guard

Title: Region Manager

Date: 16 July 2024

Signature

## Introduction

### How to use this document

The front sections of this document cover:

- general information about fire plans
- the basics of Fire and Emergency New Zealand's fire control powers
- how we use these powers to reduce the risk of unwanted fires, particularly in the open air.

The back section, [<Local area> information](#), is for specific local information about this fire plan area. Fire plans must take the local fire risk conditions into account and not just apply a blanket standard across the country. All of our areas have different levels of risk, so what may be appropriate for one area of the country may not apply somewhere else.

### Why do we have fire plans?

Fire plans are required by [section 22](#) of the [Fire and Emergency New Zealand Act 2017](#) (the Act) and the [Fire and Emergency New Zealand \(Fire Plans\) Regulations 2018](#).

According to [Regulation 5](#) of the Regulations, the purpose of a fire plan is to:

- provide transparency and predictability in relation to the use of Fire and Emergency's fire control powers under sections [52 to 58](#) and [62 to 68](#) of the [Fire and Emergency New Zealand Act 2017](#) in each local area; and
- ensure that the particular fire risk conditions in each local area are considered by Fire and Emergency when it establishes policies and procedures for, and exercises fire control powers within, that local area.

This means that we need to explain how we:

- set locally appropriate triggers for changing fire seasons for outdoor fires to:
  - require permits
  - prohibit fires
  - restrict activities that may cause unwanted fires
- apply our other powers to manage fire hazards or require firebreaks.

These explanations help people to understand what to expect, how to plan for this and what they need to do to comply with any requirements.

### Content of the fire plans

This Fire Plan is about how, when and why Fire and Emergency will exercise its fire control powers to reduce the incidence of unwanted fires in the area.

Fire plans are not about how we fight fires in the local area, or the resources available to do so.

Fire plans must do the following.

#### Describe local fire risk conditions

A fire plan must describe the particular fire risk conditions that exist or are likely to exist in the local area. This means that each fire plan:

- is accurate and relevant for its area
- can be broken down into specific zones within the area where fire risk conditions or control measures differ.



## Set out policy

A fire plan must set out the policy for fire control in the local area. It must specify when and why we:

- restrict or prohibit fires in the outdoors
- restrict activities that may cause unwanted fires
- manage fire hazards
- require firebreaks.

## Set out procedures

A fire plan must set out fire control procedures for the local area. These include:

- details of the processes that Fire and Emergency will follow
  - factors that Fire and Emergency will consider when deciding to:
    - issue notices of prohibitions or restrictions for fire control under [section 52](#) of the Act
    - declare a prohibited or restricted fire season in relation to the local area, or a part of that area, under [section 56](#) of the Act
    - issue notices in relation to firebreaks under [section 62](#) of the Act
    - issue notices to remove or destroy vegetation or other things on land under [section 65](#) of the Act.
- This means that our communities understand how we have come to those decisions, and that we can show that they are evidence-based decisions that don't impact on recreational and economic activities unnecessarily.

## Take Fire and Emergency's other requirements, agreements and policies into account

A fire plan must be consistent with:

- Fire and Emergency's national strategy
- any local planning by Fire and Emergency for the local area
- any current operational service agreement and memorandum of understanding that Fire and Emergency has with other agencies or people relevant to the local area
- any relevant Fire and Emergency policies. The first part of this template highlights policies that impact our regulatory role, However, fire plans must comply with other Fire and Emergency internal policies, such as records management.

## Cover the entire area

A fire plan must cover the entire local area that it relates to, but we can break each area down into smaller zones to manage them individually. This ensures that each fire plan is relevant to everywhere within its area.

## Set out Fire and Emergency's fire control powers

Fire plans are not about how we fight fires in the local area, or the resources available to do so. This plan is about how, when and why Fire and Emergency will exercise its fire control powers to reduce the incidence of unwanted fires in the area.

## Local area and zones

### Local area

In these fire plans, local area is the area within each Local Advisory Committee's (LAC's) boundaries.

The Fire and Emergency New Zealand (Fire Plans) Regulations 2018 indicate that Fire and Emergency must prepare and issue a fire plan for each local area as soon as possible after the boundaries of the LAC for the local area are set.

In May 2019, the Board of Fire and Emergency New Zealand approved LAC boundaries aligned with the Civil Defence Emergency Management Group (CDEMG) boundaries as originally proposed and publicly consulted. There was one modification in the Hawke's Bay LAC area to include the Tararua District.

## Zones

When dividing a local area into zones, we consider factors such as climatic conditions, geographical features, land use or territorial authority.

We also look at previous analyses of the wildfire threat.

### Applying fire seasons to zones

When we apply fire seasons to a zone, we consider:

- whether they season make sense from a fire science point of view
- how we can communicate to the public where the boundaries are.

## Consultation

Before issuing a fire plan for a local area, or an amended fire plan, Fire and Emergency must do the following:

### Publish a notice

The notice should:

- outline the proposed plan
- say where you can see and read a copy of the plan
- say how you can make a submission on the plan and where to send your submissions
- give the closing date and time for submissions.

It must be published in the Gazette, or in a newspaper circulating in the local area, or a website.

### Consider submissions

Fire and Emergency New Zealand must consider every submission received by the closing date and time for submissions.

### Include a list of key stakeholders

A fire plan should include a list of key stakeholders in the local area and zone information. Stakeholders include those who:

- were involved in creating the plan
- should contribute to maintaining it and making relevant decisions.

### Record stakeholder engagement

Fire and Emergency will record stakeholder engagement and their inputs in the stakeholder engagement plan for the fire plan.

## Review and amendment

Fire and Emergency may amend a fire plan at any time.

However, we must review the fire plan for each local area at least once every 3 years, or if there are significant changes to the boundaries of the local area.

When we review the fire plan for a local area, we must either:

- confirm that the fire plan is still appropriate for that area
- amend the fire plan as necessary and consult on changes.

## 4 Rs of emergency management

The '4 Rs' sum up New Zealand's approach to emergency management – reduction, readiness, response and recovery.

Fire plans are a part of reduction space. Previous fire plans issued under the old rural fire authorities also included readiness and response. We now put that information in our other planning work and operational procedures.

The next sections outline the work Fire and Emergency does in each of the 4 Rs.



### Reduction

Reduction means:

- identifying and analysing long-term risks to human life and property
- taking steps to eliminate these risks if practicable
- if not, reducing their impact and the likelihood of them occurring.

The first of Fire and Emergency's principal objectives is to reduce unwanted fires.

For Fire and Emergency, this work includes

- our National framework for fire control. This framework includes:
  - these fire plans
  - our fire control powers for reducing the likelihood of unwanted fire from the use of fire in the open air
  - our fire control powers for reducing the likelihood of other causes of wildfire by setting fire seasons, requiring fire permits, firebreaks and fire hazard removal
- evacuation procedures and evacuation schemes for buildings
- input into building design for fire safety, and our part in the building consent application process
- the national automatic fire alarm system
- influencing policies within standard-setting bodies and with central and local government
- public education campaigns around escape planning, fire safety, and smoke alarms
- community engagement to discuss risk reduction actions with partners and stakeholders.

### Readiness

Readiness means developing operational systems and capabilities before an emergency occurs. These include self-help initiatives for the public, specific programmes for emergency services, lifeline utilities and other services.

For Fire and Emergency, this includes:

- establishing and supporting our response capability (our fire stations and trained people) across the country.
- the 111 call centre where the public can report fires and other emergencies.
- contact lists and contracts with service providers that we can use in response.
- tactical plans (how we plan to respond to a particular site or location.)
- community planning, including rural communities.
- work with local government around provision of water for firefighting.
- response and tactical plans (how we plan to respond to a particular site or location.)
- community planning, including rural communities.
- fire weather data and indices that determine the fire danger rating.

## Response

Response means:

- attending incidents
- taking any actions from the time our communications centres are notified until to the incident controller moves the incident to recovery phase.

For Fire and Emergency, this includes:

- firefighting
- responding to hazardous substance incidents
- rescuing trapped people
- urban search and rescue.

It can also include responding to:

- medical emergencies
- maritime incidents
- other rescues
- weather events and disasters
- incidents where substances present a risk to people, property or the environment
- any other situation where we can assist.

Note: This fire plan is not a response related plan.

## Recovery

Recovery means helping people who have suffered loss and trauma to receive the appropriate support. It involves coordinated efforts and processes to bring about the immediate, medium-term and long-term recovery of a community following a major emergency.

For Fire and Emergency, this includes:

- during our immediate actions at emergencies, following good incident management practices that minimise the short-term and long-term impact and consequences of the original event
- helping those immediately affected by the emergency get the support they need, including making sure people suffering loss and trauma receive appropriate support from the relevant agency.

In addition, as a precursor to recovery, we:

- support and encourage communities to pre-plan for major events
- support recovery/clean-up activities to strengthen community resilience following an incident.

## Our commitment to working with Māori as tangata whenua

Fire and Emergency recognises the status of Māori as tangata whenua and, as such, the importance of Māori communities as key stakeholders in Fire and Emergency's work.

We recognise:

- iwi and Māori as community leaders with an important role to play in preventing fires and other emergencies, building community resilience, and informing emergency response
- iwi as our partners in risk reduction as significant and growing land and forest owners
- Māori are disproportionately affected by unwanted fires, and that needs to change.

By committing to working with tangata whenua, we contribute to a safer environment not only for Māori but for all New Zealand communities.

We will do this by building strong relationships that enable us to engage with iwi and Māori as we design and deliver services. This will require us to engage in culturally appropriate ways. We will strengthen our cultural capability, diversity and inclusion, so that we better reflect and engage with the communities we serve.

## National Framework for Fire Control

Not all fires are unwanted. New Zealand has a long history of using fire as a tool, for land management, cooking, recreation, comfort, and warmth.

The National Framework for Fire Control consists of policies, tools and agreements that enable Fire and Emergency to manage fires. The framework supports people to use fire safely where appropriate and restricts or prohibits its use when there is a risk of unwanted fire.

The public face of the framework is:

- the [Checkitsalright.nz](https://www.checkitsalright.nz) website
- the [fire permit application system](#)
- these fire plans
- additional information on our public website – [fireandemergency.nz](https://www.fireandemergency.nz).

This plan outlines Fire and Emergency's statutory fire control powers and how we can apply them to help reduce risk by:

- Setting fire seasons
- Prohibiting fire in open air or revoking the prohibition
- Prohibiting or restricting activities or revoking the prohibition or restriction
- Fire permitting
- Control of firebreaks
- Fire hazard removal

## Our policies

This table sets out the current internal policies and supporting processes that guide our decisions and actions.

Policy	Detail
Fire seasons, prohibitions and restrictions policy	Relates to sections <a href="#">52 to 58</a> of the Act and decisions to: <ul style="list-style-type: none"> <li>• declare or revoke a prohibited or restricted fire season</li> <li>• prohibit fire in open air or revoke a prohibition</li> <li>• prohibit or restrict activities that may cause a fire to start or spread and revoke prohibition or restriction.</li> </ul>

Policy	Detail
Fire permitting policy	<p>Supports the policy above and defines actions for:</p> <ul style="list-style-type: none"> <li>• supporting a member of the public who is applying for a fire permit</li> <li>• assessing a fire permit application</li> <li>• granting or renewing a fire permit</li> <li>• refusing to grant or renew a fire permit</li> <li>• suspending or cancelling a fire permit</li> <li>• operational decisions when responding to an alarm of fire in open air.</li> </ul>
Firebreaks policy	<p>Relates to sections <a href="#">62 to 64</a> of the Act to support decisions and actions relating to requirements for landholders to:</p> <ul style="list-style-type: none"> <li>• make and clear any firebreak on the landholder’s land</li> <li>• remove any vegetation or other thing from an existing firebreak.</li> </ul>
Fire hazard removal policy	<p>Relates to sections <a href="#">65 to 68</a> of the Act and decisions about what to do when:</p> <ul style="list-style-type: none"> <li>• a potential fire hazard is reported to Fire and Emergency</li> <li>• we assess a potential fire hazard</li> <li>• we arrange for the removal or destruction of a confirmed fire hazard.</li> </ul>
Regulatory compliance policy	<p>Covers how we monitor and take action to identify and influence landowners and others to comply with the requirements of the Act and other relevant legislation. This covers activities which:</p> <ul style="list-style-type: none"> <li>• reduce harm from unwanted fire</li> <li>• support the safe use of fire as a land management tool and reduce harm if fire escapes control</li> <li>• minimise avoidance of the Fire Emergency levy</li> <li>• reduce non-compliance with any legislation or regulations under which Fire and Emergency New Zealand has a compliance function.</li> </ul>

## Fire risk conditions

The Act defines the circumstances where we can use our fire control powers to prohibit fire and or restrict other activities as when:

- fire risk conditions exist or are likely to exist in the area; and
- the prohibition or restriction is necessary or desirable for fire control.

We also take these into account when setting fire seasons.

The Act defines fire risk conditions as weather or other conditions that will, or are likely to, endanger persons or property by increasing the risk of the outbreak or spreading of fire.

Decision-makers must be satisfied that:

- fire risk conditions, and potential ignition sources exist, or are likely to exist in the area
- these will endanger people or property by increasing the risk of outbreak or spread of fire.

They make decisions based on evidence, not for the convenience of Fire and Emergency.

This table sets out other fire risk conditions we consider to be fire risk conditions for the purposes of exercising our fire control powers.

Condition	Description
Fire weather science	<p>The NZ Fire Danger Rating System includes measures such as:</p> <ul style="list-style-type: none"> <li>• Build-up Index (BUI)</li> <li>• Initial Spread Index (ISI)</li> </ul>

Condition	Description
	<ul style="list-style-type: none"> <li>• Fire Weather Index (FWI)</li> <li>• Grass curing percentage</li> <li>• Fine Fuel Moisture Code (FFMC)</li> <li>• Drought code (DC).</li> </ul>
Topography	<p>Factors that influence how a fire spreads, including:</p> <ul style="list-style-type: none"> <li>• steepness of slope</li> <li>• direction fire is facing, i.e. aspect</li> <li>• terrain features, e.g. gullies and chimneys.</li> </ul>
Fuel behaviour models	The characteristics of fuel, or vegetation, that contribute to fire ignition and spread.
History of fires	History of recent fires and their ignition sources in the area, based on available fire data.
Socio-economic factors	<p>Factors that influence the likelihood of fires being lit for cooking purposes and to dispose of rubbish in backyards, e.g. absentee owners and lifestyle blocks burning during holiday season.</p> <p>Expectations of the public to be able to light certain types of fires, e.g. cultural cooking fires.</p>
Time of year	Time of year, e.g. land clearing forestry, land clearing hill and high country, late winter to spring.
Public knowledge – awareness of the risks	The expected public awareness of risks may be low, e.g. a large influx of visitors during summer holiday periods who may reasonably be expected to have little understanding of the risks of lighting fires in an area.
Proximity to property or other values	<p>The closeness of property or other valuables to fire, for example:</p> <ul style="list-style-type: none"> <li>• life values, e.g. size of land parcels in an urban area</li> <li>• distance from commercial forestry.</li> </ul>
Ability to respond effectively	<p>Factors that contribute to our ability to respond to an out of control fire include:</p> <ul style="list-style-type: none"> <li>• availability of response resources, i.e. people and equipment</li> <li>• isolation</li> <li>• accessibility issues</li> <li>• availability of water supplies.</li> </ul>
Impacts from natural hazards	Natural hazards impacts are likely to influence resource availability and the likelihood of fires.
People	The presence of people increases the risk of fire.
Impact of other events that increase the risk of the outbreak or spread of fire	Events that increase the risk of potential fire, e.g. the rupture of an oil pipeline.

## Fire seasons

Fire and Emergency uses fire seasons to:

- inform people about the requirements for or restrictions on lighting fires in the open air.
- manage the use of fire to protect communities from the consequences of unwanted fire.

There may be other legal requirements and regulatory approvals needed for a fire under other legislation, such as the [Resource Management Act 1991](#), or Council by-laws. It is your responsibility to comply with all other legislation and get all other necessary approvals.

Fire and Emergency can declare or revoke a prohibited or restricted fire season in an area. We use our fire seasons, prohibitions and restrictions policy and associated processes, (including stakeholder and partner consultation) to manage this.

Fire seasons are applied to geographic zones based on:

- the fire environment (fuel types, fuel condition (curing/dryness), weather, topography, historic trends)
- fire climatic zones
- topographical boundaries/features (rivers, roads, coastlines, forest and national park boundaries)
- fire control considerations.

There are three types of fire season is in force at any time in an area or zone:

#### Open fire season



Fires may be lit in open air, without restriction. Applies whenever there is not a prohibited or restricted fire season in place.

#### Restricted fire season



Lighting a fire is riskier than usual and you must get a fire permit. This permit may also have specific conditions to make sure you can light a fire safely and it will remain under control.

#### Prohibited fire season



Lighting fires in the open air is not permitted. Existing fire permits are suspended, though fire permits may still be granted in exceptional circumstances.

It is important that people know what the current fire season is and understand how they can comply with the requirements.

To see what the current fire season is within a local area (or zone within an area) go to [checkitsalright.nz](https://checkitsalright.nz).

## Open fire seasons

We use an open fire season when the fire danger is consistently low enough that Fire and Emergency does not need to apply additional controls on when people can light fires in the open air. To help you to use fire safely, we have a set of guidelines for fire types that you should follow even when there are no restrictions or prohibitions in place, see the [Authorised fire types, descriptions and conditions](#) table below for guidance.

Note that this does not mean that you can light fires anywhere you want to. You should still check the conditions at [checkitsalright.nz](https://checkitsalright.nz) and follow any advice provided.

Those lighting a fire have a duty of care to ensure that fire remains under control and is fully extinguished once complete. [Section 60 \(1\)](#) of the Act requires this: 'A person must not cause or allow a fire to get out of control and to spread to vegetation or property.'

Other legislation or regulatory requirements, such as local council or regional council by-laws or air quality plans, may apply additional restrictions, or not allow you to light a fire at all.

You must also have permission from the landowner or occupier to light a fire, even in an open fire season.



We still like to hear from you if you are lighting a large fire, e.g. for land management, so that we can share advice on how and when to light and use your fire safely. Go to our [Fire Permit website](#). Select Lighting a fire in an open season and complete the address info or use the map. Once the address information updates and confirms an Open fire season, select the Notify Us of your fire button at the bottom of the screen and complete the form.

This also helps us manage notifications about your fire that might be made by members of the public.

## Restricted fire seasons

We use restricted fire seasons when the fire danger has increased enough that we need more control over where, when and how people use fire.

Requiring permits for particular types of fires in the open air lets us know where and when fire is being used. This means our fire brigades don't need to respond unnecessarily.

It also gives us an opportunity to advise how to light and use the fire safely. We can also apply conditions about when the fire can be lit, how big it can be, or any other requirements that reduce the chance of the fire escaping control. Go to [firepermit.nz](#) to check and apply

**Note:** When you get a permit, you must read and follow the conditions of that permit.

## Prohibited fire seasons

When the fire danger reaches higher levels, we need to stop people from lighting fires that may escape. Fire behaviour during these conditions makes fires very difficult and dangerous to contain, control and extinguish.

Certain types of fires may still be used, but people need to be very careful with fire during these times. See the section on [Authorised fire types in a prohibited fire season](#).

## Trigger thresholds for changing fire seasons

The New Zealand Fire Danger Rating System and its component Fire Weather System are a consistent, scientific way to monitor the fire danger in an area.

Trigger thresholds are based on relevant fire weather measurements and values. They are set in consultation with stakeholders for declaring restricted and prohibited fire seasons within the fire plan area or fire season zone within that area. The trigger thresholds identify when prevailing weather conditions create ongoing potential for problem fires.

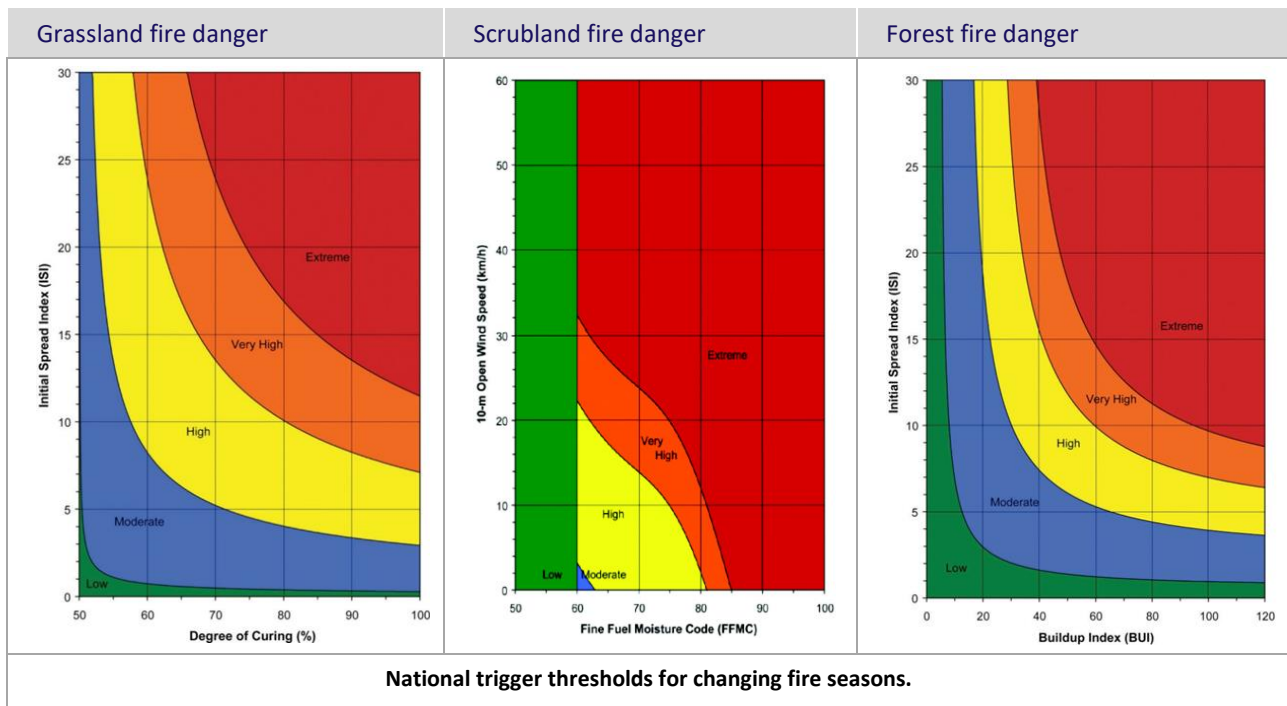
The trigger thresholds use:

- the Remote Automatic Weather Station (RAWS) climatology data for the fire plan area or zone.
- historical fire data for the fire plan area or zone.

Other factors, such as consultation with partners, resource availability or other emergency events, may also influence a decision to declare or revoke a fire season earlier or later than the trigger threshold would indicate.

Forecast weather trends must be taken into consideration when declaring a change in fire season. An upcoming rain event may defer a change in fire season or forecast dry weather. Strong winds may indicate a need to change fire season days before the trigger threshold would otherwise be reached.

Locally agreed thresholds will be listed in the zone information in this document.



## Prohibiting fires in open air (section 52)

Fire and Emergency may sometimes need to prohibit fires in the open air outside the usual fire season changes. These occasions are known as Extreme fire, Red Flag Days or Cross-Over conditions. Examples of when we might use these powers are:

- during large or multiple incidents that put firefighting resources under strain
- when extreme fire weather conditions occur during a restricted fire season, e.g. strong dry winds, high temperatures associated with very low humidity
- when emergency events occur, e.g. a rupture of the Marsden Point fuel pipeline, increasing the fire hazard in a specific area.

We can only prohibit fires in the open air when fire risk conditions exist or are likely to exist that indicate that the prohibition or restriction is necessary or desirable for fire control.

Fire and Emergency may also prohibit fires in the open air while any pandemic support legislation, such as the [Epidemic Preparedness \(COVID-19\) Notice 2020](#), is in force. Fire and Emergency can do this without needing to consider fire risk conditions or other factors. This might happen if our response capabilities are affected by any pandemic, and we aren't able to respond effectively if there is an unwanted fire.

Fire and Emergency can create temporary zones that are smaller than the zones in this fire plan for the purposes of limiting the impact of prohibiting fires in open air under [section 52](#) of the Fire and Emergency New Zealand Act 2017.

If someone breaches the ban, they can be charged under [section 54](#) of the Act.

## Trigger thresholds for prohibiting fire in open air

We can use the same Fire Weather System trigger thresholds for prohibiting fires in the open air under [section 52](#) as we do for changing to a prohibited fire season, but use [section 52](#) when the fire risk conditions are not expected to last long enough to make changing to a prohibited fire season practical.

If Fire and Emergency has come to an agreement with stakeholders on other thresholds for when to implement a [section 52](#) prohibition of fire in open, these will be included in the zone information in this document.

## Restricting and prohibiting activities (section 52)

There are times when fire risk conditions are elevated to an extent that certain activities may cause a fire to start or spread. These occasions are known as Red Flag Days or Cross Over conditions. Examples of these activities include but are not limited to:

- roadside mowing
- ‘hot works’ – cutting or welding operations outdoors using portable gas, disc grinder or arc welding equipment that produces sparks, flames or heat
- chainsaw use or scrub-cutting
- mowing, ploughing or harrowing fields
- use of retail fireworks and, in certain conditions, pyrotechnics (See the [Retail fireworks](#) and [Pyrotechnics](#) sections below)

[Section 52](#) of the Act allows us to prohibit or restrict one or more activities in an area or areas when we assess that:

- the activity (including access to an area) may cause a fire to start or spread and adequate controls are not available
- [fire risk conditions](#) exist or are likely to exist in the area
- the prohibition or restriction is necessary or desirable for fire control purposes
- it’s not possible to adequately mitigate the assessed risk.

This table defines prohibition and restriction.

When an activity is...	It means the activity...
Prohibited	must not be undertaken at all by any person while the prohibition is in effect (except if it is an excluded activity that relates to the carrying out of essential services in the area).
Restricted	can be undertaken subject to certain conditions, such as restrictions on: <ul style="list-style-type: none"> <li>• the times of the day</li> <li>• the manner in which it is undertaken.</li> </ul>

If we have restricted or prohibited access to a location under [section 52](#), we can’t prevent someone who lives or works in the location from entering. [Section 52](#) also doesn’t prevent someone from carrying out essential services where it applies.

Essential services are:

- supplying and distributing of food, water, fuel, power, and other necessities
- maintaining transport and communication facilities that are essential to the well-being of the community
- maintaining the health of the community
- maintaining law and order, public safety, and the defence of New Zealand
- preserving property at immediate risk of destruction or damage.

Fire and Emergency can create temporary zones that are smaller than the zones in this fire plan for the purposes of limiting the impact of restricting or prohibiting activities under [section 52](#).

If someone fails to comply with the restriction or prohibition, they can be charged under [section 54](#) of the Fire and Emergency New Zealand Act 2017.

## Trigger thresholds for restricting or prohibiting activities under section 52

Some industries have their own restrictions that they place on themselves when fire risk increases. However, we will use [section 52](#) to apply the restrictions or prohibitions to everyone within the zone when either:

- these voluntary restrictions are not enough to reduce the risk of a fire starting or spreading, or
- we need to restrict or prohibit the public from the same high risk activities.

Our policy for fire seasons, prohibitions and restrictions says that we only prohibit or restrict activities if:

- we have engaged with stakeholders
- they are unable to satisfactorily mitigate the identified risks.

Legally restricting or prohibiting activities can have a significant economic impact, so we won't do it without due consideration.

If we've agreed with stakeholders on set thresholds for implementing a [section 52](#) restriction or prohibition, we'll include these in the zone information in this document.

## Activities and risk mitigation

### Forestry operations

The NZ Forest Owners Association have developed the [Forest Fire Risk Management Guidelines \(2018\)](#) which contains example trigger point tables and what fire prevention actions are suggested during different fire danger levels. Fire and Emergency supports these guidelines.

The National Environmental Standard – Commercial Forestry (NES-CF) regulations and SCION research confirms that the risk of heating and spontaneous combustion in slash can be reduced by eliminating embedded rubbish (metal), monitoring depth and compaction of slash piles and local fire environment conditions.

If local trigger values have been set, they will be listed in the zone information in this document. NIWA's fire weather website [www.fireweather.niwa.co.nz](http://www.fireweather.niwa.co.nz) will be updated to display the levels decided locally.

### Powerline auto-reclosers

Most power companies use a computer-controlled auto recloser system. This attempts to reconnect the power up to three times after a fault, before they send a technician. If a downed wire caused the fault, this creates three potential sparking events.

To comply with the [Electricity \(Hazards from Trees\) Regulations 2003](#), power companies also take other risk reduction measures. These include trimming trees around power lines, reporting faults to the public, putting power lines underground, and giving guidance on tree planting.

If local trigger values have been set, they will be listed in the zone information in this document. NIWA's fire weather website [www.fireweather.niwa.co.nz](http://www.fireweather.niwa.co.nz) will be updated to display the levels decided locally.

### Hot works

This includes activities such as welding, grinding, and metal cutting.

If local trigger values have been set, they will be listed in the zone information in this document. NIWA's fire weather website [www.fireweather.niwa.co.nz](http://www.fireweather.niwa.co.nz) will be updated to display the levels decided locally.

Fire and Emergency will work with Waka Kotahi (NZTA) and local councils on roadside mowing issues during days with elevated fire danger and changing operations to suit conditions.

We will also work with rural land managers to discuss the approach to fire measures, the use of machinery and equipment during high fire danger periods and the potential effect on local landholders and communities.

### Retail fireworks and pyrotechnics

Fire and Emergency does not regulate the use of fireworks or pyrotechnics when fire risk conditions are not elevated.

The term 'firework' is reserved for retail fireworks that are specifically sold to the public. A display of 'fireworks' does not require written agreement from Fire and Emergency. However, pyrotechnics are classed as a hazardous substance and must be under the control of a person who holds a certified handler compliance certificate for the substances they are working with. This person must get written approval from Fire and Emergency before they hold a display.

When fire risk conditions are elevated, Fire and Emergency can restrict or prohibit the use of fireworks, and in certain circumstances, pyrotechnics, as an activity under [section 52](#) of the Fire and Emergency New Zealand Act 2017.

### Fireworks

Sale of fireworks is regulated by the [Hazardous Substances \(Fireworks\) Regulations 2001](#). Storage is regulated by the [Health and Safety at Work \(Hazardous Substances\) Regulations 2017](#).

Council by-laws may limit where and when fireworks may be used.

Whether fireworks should be banned is a decision for Government, and our work related to fireworks will continue to reflect decisions made by central Government.

Fire and Emergency is responsible for promoting fire safety, so we advise the public on using fireworks safely. We recommend people attend publicly organised displays where possible.

### Pyrotechnics

Applications for indoor and outdoor pyrotechnic displays need to comply with sections [9.35](#) and [9.43](#) of the Health and Safety at Works (Hazardous Substances) Regulations 2017.

The person in charge of a pyrotechnics display must get written agreement from Fire and Emergency before holding the display.

The exception to requiring written agreement is for a class 1 category G pyrotechnic display. This is where the pyrotechnics are used for special effects (e.g. film set) and there is no intention to display them to the public.

Fire and Emergency is not an enforcement agency for hazardous substances.

Fire and Emergency's agreement or otherwise to a specific pyrotechnic display proceeding will be determined in accordance with Fire and Emergency's policy and standard operating procedures relating to the same.

Sometimes, after we consider the relevant risk conditions in a particular area, we may decide that, even where the requirements of the Health and Safety at Work (Hazardous Substances) Regulations 2017 could be met in terms of controlling fires igniting within an exclusion zone, the risk to the surrounding area outside of any exclusion zone nevertheless requires a prohibition or restriction of pyrotechnic displays generally under [section 52](#). However we are only likely to do this in situations where, for example, the terrain, weather and substrate are such that there is a risk of a pyrotechnic display causing fire to ignite outside of any exclusion zone in the area.

## Communicating changes in fire seasons and restrictions or prohibitions

It's important that people planning to light fires in the open air know whether they can do so safely and legally. This means they need to know:

- the current fire season in the area
- whether any other prohibition applies
- whether a permit is required.

We notify our communities, stakeholders and partners of fire season changes and restrictions and prohibitions under [section 52](#) of the Act in several ways. These include:

- direct contact with our partners and stakeholders, including email

- local newspaper and radio ads
- social media and media
- email and text directly to permit holders
- on the Check It's Alright website [checkitsalright.nz](https://checkitsalright.nz)
- via information available by phoning 0800 658 628
- with fire danger or fire season signs – we change these to reflect season status by adding 'Fire by permit only', 'Total fire ban' or similar messaging.

During periods of elevated and extreme fire danger days, we increase our communication of fire safety and prevention messages. This is to build awareness of the dangers of wildfires and promote positive behaviour changes. Since fire danger/fire risk conditions are locally specific, Districts will make local decisions about the best ways to communicate this to their communities.

We can also target messaging using traditional and digital media, such as social media and on-demand video, at affected areas at the most effective times.

When a fire season change affects public conservation land (PCL), we must also notify the Department of Conservation (DOC) if we intend to declare or revoke a prohibited or restricted fire season on public conservation land. This must also be followed up with a written notification.

Department of Conservation informs visitors of the controls or bans on lighting fires, including for cooking, warmth and campground fires, through notices and advertising.

## Fire permits

The information included with a fire permit helps people understand how to light a fire safely and to reduce the risk of their fire burning out of control. Fire permits carry conditions which vary based on the type and size of the proposed fire, along with the current local fire risk conditions. To check and apply for a fire permit, visit [firepermit.nz](https://firepermit.nz).

Fire risk conditions vary by time and other factors such as fuel, weather and topography, so the acceptable conditions for burning are set for each fire permit.

We may also suspend or cancel fire permits in certain circumstances, such as:

- where fire risk conditions change
- for fire control purposes
- as fire seasons change or we imposed prohibitions.

Under [section 190\(8\)](#) of the Act, granting a fire permit does not impose any liability on Fire and Emergency.

## Council by-laws, regional plans, legal covenants, or restrictions

Fire and Emergency must only consider the fire risk conditions when issuing permits. We can't apply other organisations' requirements, so even if we've issued a fire permit, you may still not be allowed to light your fire due to other requirements.

Even if you don't need a fire permit from us, due to an open fire season etc., you may not be able to light fires in some places. You must also follow council by-laws and regional plan rules relating to smoke and air pollution.

Managing smoke nuisance comes under local government jurisdiction and not Fire and Emergency's, unless the smoke is an immediate threat to life. However, we will still promote good practice and suggest alternatives.

There may also be legal covenants or restrictions which restrict the ability to light a fire in some areas, regardless of the fire season – for example, if there are power pylons or other infrastructure nearby.

You will also need private landowner or occupier approval before lighting a fire, even if Fire and Emergency has issued a fire permit.

If there is signage in a location that says to light no fires or equivalent, then you must follow those instructions.

Where relevant, information about applicable bylaws and regional plans is included in the area overview of this document.

## When a permit is needed

The need for a fire permit is based on the:

- type of fire
- fire season, or restrictions or prohibitions on fires in the open air.

## Fire types

Some fire types may be allowed in restricted and prohibited fire seasons by making them:

- authorised (no permit required)
- permit required

For more information on fire types, see [Open air fires – rules and permits](#) on the Fire and Emergency website [www.fireandemergency.nz](http://www.fireandemergency.nz).

### Authorised fire types, descriptions and conditions in a restricted fire season

This table lists the fire types that are authorised in a restricted season and the conditions for using them. As long as people using these fire types in a restricted season meet these conditions, they don't need to get a fire permit, because Fire and Emergency doesn't consider them to be fires in open air.

Fire type	Description and conditions
Gas-operated appliances	<p>Manufactured gas-operated appliances, such as barbecues, outdoor fireplaces and outdoor gas heaters.</p> <p>Find out more about the safe use of <a href="#">Gas BBQs, cookers and heaters</a>.</p>
Charcoal barbecues or grills	<p>Barbecues or grills that use either charcoal briquettes or natural lump charcoal as their fuel source.</p> <p><b>Conditions</b></p> <ul style="list-style-type: none"> <li>• Don't use on an apartment balcony, deck, under a roof overhang or within other enclosed areas.</li> <li>• You must have a suitable way to extinguish the fire within easy reach – a maximum of 5 metres away.</li> <li>• You must not leave the fire unsupervised while burning</li> </ul> <p>If you cannot meet this condition, you must apply for a permit.</p>
Open-top liquid fuel cooker	<p>Examples include (but are not limited to) portable smokers.</p> <p>These are usually small portable cooking devices that are liquid-fuelled with an open fuel container either under or in the cooking device.</p> <p><b>Conditions</b></p> <ul style="list-style-type: none"> <li>• Must be on a non-combustible area/base.</li> <li>• You must have a suitable way to extinguish the fire within easy reach – a maximum of 5 metres away.</li> <li>• Don't light your fire within 3 metres of any part of a building, hedge, shelter belt or any other combustible material.</li> <li>• You must not leave the fire unsupervised while burning.</li> </ul> <p>If you cannot meet these conditions, you must apply for a permit.</p>



Fire type	Description and conditions
Non-pressurised liquid-fuelled heaters	<p>Examples include (but are not limited to) frost pot, smudge pot, diesel heater. Usually fuelled by diesel, vegetable oil, kerosene or waste oil.</p> <p><b>Conditions</b></p> <ul style="list-style-type: none"> <li>• Must be at least 3 metres clear of any part of a building, hedge, shelter belt or any other combustible material.</li> <li>• Must be placed on a non-combustible surface, not directly on grass or wooden decks.</li> <li>• You must not use the heater in small, confined areas.</li> <li>• If refuelling, ensure heater has cooled down before refilling.</li> <li>• You must not leave the fire unsupervised while burning.</li> </ul> <p>If you cannot meet these conditions, you must apply for a permit.</p>
Permanent outdoor fireplace Wood-fired pizza oven/wood oven	<p>Purpose-built or manufactured woodburning fireplace/wood oven with an open front and a vertical smoke vent/chimney.</p> <p>Generally constructed of concrete, concrete blocks, stone, or bricks, fixed in place (not mobile/movable).</p> <p>Usually in home outdoor entertaining areas.</p> <p><b>Conditions</b></p> <ul style="list-style-type: none"> <li>• Must have a non-combustible hearth or base that extends a minimum of 500 mm either side of the left and right edges and a minimum of 1 metre from the front edge of the fire box. This is to stop any burning material falling from the fire box landing onto anything combustible.</li> <li>• Smoke vent/chimneys must have a purpose-built manufactured cap, or maximum of 5 millimetre steel mesh fitted in the top to stop any hot ash or embers from escaping.</li> <li>• Firewood storage must be in areas not affected by heat from the fire and clear of any possible hot ash or ember-affected areas.</li> <li>• You must have a suitable way to extinguish the fire within easy reach – a maximum of 5 metres away.</li> <li>• You must not leave the fire unsupervised while burning, or</li> <li>• It must have a solid or mesh screen/door that prevents any burning material from escaping the fire box.</li> <li>• Fireplaces with external construction made of steel must be at least 1 metre clear of any part of a building, hedge, shelter belt or any other combustible material.</li> </ul> <p>If you cannot meet these conditions, you must apply for a permit.</p>
Movable/portable free-standing front-loading fireplace.	<p>Examples include (but are not limited to) <b>chiminea</b>.</p> <p>A freestanding front-loading fireplace or oven, usually with a bulbous body – usually has a vertical smoke vent or chimney.</p> <p><b>Conditions</b></p> <ul style="list-style-type: none"> <li>• Don't light your fire within 3 metres of any part of a building, hedge, shelter belt or any other combustible material.</li> <li>• You must have a suitable way to extinguish the fire within easy reach – a maximum of 5 metres away.</li> <li>• You must not leave the fire unsupervised while burning or</li> <li>• It must have a solid or mesh screen/door that prevents any burning material from escaping the fire box.</li> </ul> <p>If you cannot meet these conditions, you must apply for a permit.</p>
Cultural cooking fires	<p><b>Conditions</b></p> <p>Examples include hāngi, umu and lovo.</p>



Fire type	Description and conditions
	<p><b>Conditions</b></p> <ul style="list-style-type: none"> <li>• Your fire area must be less than 4 square metres.</li> <li>• Don't light your fire within 5 metres of any part of a building, hedge, shelter belt or any other combustible material.</li> <li>• You must have a suitable way to extinguish it within easy reach – a maximum of 5 metres from your cultural fire.</li> <li>• You must not leave the fire unsupervised while burning.</li> <li>• On completion of cooking or the purpose required for cooking food the fires must be extinguished.</li> </ul> <p>If you cannot meet these conditions, you must apply for a permit. Find out more about the safe use of <a href="#">Cultural cooking fires</a>.</p>
<p>Braziers Fire pits/bowls (Recreational)</p>	<p>Brazier: a container for hot coals – usually an upright standing or hanging metal bowl or box. Fire pit/bowl: a pit dug in the ground, made from stone, brick or metal, or a bowl on an upright stand.</p> <p><b>Conditions</b></p> <ul style="list-style-type: none"> <li>• Your fire area must be less than 1 square metre.</li> <li>• Where hot embers/ash are able to escape, there must be a non-combustible base/tray that will contain these hot embers or ash, to prevent any risk of fire escaping.</li> <li>• Don't light your fire within 3 metres of any part of a building, hedge, shelter belt or any other combustible material.</li> <li>• You must have a suitable way to extinguish it within easy reach – a maximum of 5 metres from your brazier or fire pit/bowl.</li> <li>• You must not leave the fire unsupervised while burning.</li> </ul> <p>If you cannot meet these conditions, you must apply for a permit.</p>
<p>Manufactured or drum incinerators</p>	<p>A drum or container, with a mesh or solid lid designed to prevent the escape of hot ash or fire, often with a vertical smoke vent or chimney; designed exclusively for incineration.</p> <p><b>Conditions</b></p> <ul style="list-style-type: none"> <li>• Don't light your fire within 5 metres of any part of a building, hedge, shelter belt or any other combustible material.</li> <li>• You must have a suitable way to extinguish it within easy reach – a maximum of 5 metres from your incinerator.</li> <li>• Smoke vent/chimneys must have a purpose-built manufactured cap or maximum of 5 millimetre steel mesh fitted in the top to stop any hot ash or embers from escaping.</li> </ul> <p>If you cannot meet these conditions, you must apply for a permit.</p>

### Authorised fire types on public conservation land in a restricted fire season

This table lists the fire types that are authorised on public conservation land (PCL) in a restricted fire season and the conditions for using them. As long as people using these fire types in a restricted season meet these conditions, they don't need to get a fire permit, because Fire and Emergency doesn't consider them to be fires in open air.

Fire type	Description and conditions
Gas-operated appliances	<p>Manufactured portable gas-operated appliances, such as butane tramping stoves, gas barbeques and outdoor gas heaters.</p> <p>Find out more about the safe use of <a href="#">barbeques and gas cylinders</a> and <a href="#">outdoor gas-operated appliances</a>.</p> <p><b>Conditions</b></p> <p>The gas-fire must not be:</p> <ul style="list-style-type: none"> <li>lit if the appliance is not in full operational condition in accordance with the manufacturer's specifications</li> <li>lit unless on a flat, level surface, stable and solid enough to support the weight of the appliance plus any containers and food used during cooking</li> <li>lit unless at least one metre clear of all combustible material</li> <li>lit in conditions where wind or other factors may cause the fire to spread to surrounding flammable material</li> <li>left unsupervised while flame is present.</li> </ul>
Pressurised liquid appliances	<p>Manufactured portable liquid cookers which use liquid under pressure to fuel the cooker. The type of liquid is not specific (e.g. White spirits, kerosene or methylated spirits) but the delivery mechanism is.</p> <p><b>Note:</b> This excludes <a href="#">cookers using an open top, non-pressurised system</a>.</p> <p><b>Conditions</b></p> <p>The pressurised liquid fire must not be:</p> <ul style="list-style-type: none"> <li>lit if the appliance is not in full operational condition in accordance with the manufacturer's specifications</li> <li>lit unless it is on a flat, level surface, stable and solid enough to support the weight of all the appliance parts plus any containers and food used during cooking</li> <li>lit unless at least one metre clear of all combustible material</li> <li>lit in conditions where wind or other factors may cause the fire to spread to surrounding flammable material</li> <li>left unsupervised while flame is present and/or the liquid is still turned on.</li> </ul>
Campfires in a permanent fireplace	<p>Positioned and constructed by the Department of Conservation (DOC) to minimise the threat of fire spread and located within formally established DOC overnight campsites or daytime amenity areas.</p> <p><b>Conditions</b></p> <p>The campfire in a permanent fireplace must not be:</p> <ul style="list-style-type: none"> <li>lit if the fireplace has any damage that could allow the fire, hot embers, or ash to escape and spread beyond the constructed fireplace</li> <li>within three metres of any combustible material</li> <li>lit where notices and advertising are present which specifically prohibit the lighting of fires</li> <li>lit during a prohibited fire season</li> <li>lit in conditions where wind or other factors may cause the fire to spread to surrounding flammable material</li> <li>left unsupervised while burning and without the ashes being fully extinguished</li> </ul>

Fire type	Description and conditions
	used to burn rubbish.
Cooking and warming fires	<p>Small, open outdoor wood-burning fires are only permitted to be lit on PCL in remote areas and only if required for essential cooking or survival purposes. As a guide, remote areas for this purpose are considered to be at least 3km from the nearest public road, public vehicle easement accessway or publicly accessible jetty or wharf.</p> <p>Additionally, fires must not be lit in locations fitting the freedom camping criteria, as defined in the <a href="#">Freedom Camping Act (2011)</a>.</p> <p><b>Conditions</b></p> <p>The cooking and warmth fire must not be:</p> <ul style="list-style-type: none"> <li>more than 0.5 m diameter x 0.5 m height (including wood and flames)</li> <li>within three metres of any tree or any place underneath overhanging vegetation; and</li> <li>within three metres of any log or any dry vegetation</li> </ul> <p>lit unless and until the ground surface within three metres of the site of the fire has been cleared of all combustible material</p> <p>lit where notices and advertising are present which specifically prohibit the lighting of fires or specify the lighting of fires only in other types of receptacles or places</p> <p>lit in National Parks which have bylaws prohibiting the lighting of wood burning fires in the open air</p> <p>lit during a prohibited fire season</p> <p>lit in conditions where wind or other factors may cause the fire to spread to surrounding flammable material</p> <p>left unsupervised without the ashes being fully extinguished</p> <p>used to burn rubbish.</p> <p><b>Note:</b> This only applies to small open fires (as described above). Solid fuel fires, front loaded portable fires, non-gas barbecues or chimineas are all <b>prohibited</b> fire types on Public Conservation Lands at all times.</p> <p>Find out more about the safe use of <a href="#">campfires</a>.</p>

### Authorised fire types, descriptions and conditions in a prohibited fire season

This table lists the fire types that are authorised in a prohibited season and the conditions for using them. As long as people using these fire types in a prohibited season meet these conditions, they don't need to get a fire permit, because Fire and Emergency doesn't consider them to be fires in open air.

Fire type	Description and conditions
Gas-operated appliances	<p>Manufactured gas-operated appliances, such as barbecues, gas outdoor fireplaces and outdoor gas heaters.</p> <p><b>Conditions</b></p> <p>Find out more about the safe use of <a href="#">Gas BBQs, cookers and heaters</a>.</p>

Fire type	Description and conditions
Charcoal barbecues or grills	<p>Barbecues or grills that use either charcoal briquettes or natural lump charcoal as their fuel source.</p> <p><b>Conditions</b></p> <ul style="list-style-type: none"> <li>• Don't use on an apartment balcony, deck, under a roof overhang or within other enclosed areas.</li> <li>• You must have a suitable way to extinguish the fire within easy reach – a maximum of 5 metres away.</li> <li>• You must not leave the fire unsupervised while burning.</li> </ul> <p>If you cannot meet these conditions, you must apply for a permit.</p>
Open top liquid fuel cooker	<p>Examples include (but are not limited to) portable smokers.</p> <p>These are usually small portable cooking devices that are liquid-fuelled with an open fuel container either under or in the cooking device.</p> <p><b>Conditions</b></p> <ul style="list-style-type: none"> <li>• Must be on a non-combustible area/base.</li> <li>• You must have a suitable way to extinguish the fire within easy reach – a maximum of 5 metres away.</li> <li>• Don't light your fire within 3 metres of any part of a building, hedge, shelter belt or any other combustible material.</li> <li>• You must not leave the fire unsupervised while burning.</li> </ul>
Non-pressurised liquid-fuelled heaters	<p>Examples include (but are not limited to) frost pot, smudge pot, diesel heater.</p> <p>Usually fuelled by diesel, vegetable oil, kerosene or waste oil.</p> <p><b>Conditions</b></p> <ul style="list-style-type: none"> <li>• Must be at least 3 metres clear of any of any part of a building, hedge, shelter belt or any other combustible material.</li> <li>• Must be placed on a non-combustible surface, not directly on grass or wooden decks.</li> <li>• You must not use the heater in small, confined areas.</li> <li>• If refuelling, ensure heater has cooled down before refilling.</li> <li>• You must not leave the fire unsupervised while burning.</li> </ul> <p>If you cannot meet these conditions, you must apply for a permit.</p>

Fire type	Description and conditions
<p>Permanent outdoor fireplace</p> <p>Wood-fire pizza oven/wood oven</p>	<p>Purpose-built or manufactured woodburning fireplace/wood oven with an open front and a vertical smoke vent/chimney.</p> <p>Generally constructed of concrete, concrete blocks, stone, or bricks, fixed in place (not mobile/movable).</p> <p>Usually in home outdoor entertaining areas.</p> <p><b>Conditions</b></p> <ul style="list-style-type: none"> <li>• Must have a non-combustible hearth or base that extends a minimum of 500 mm either side of the left and right edges and a minimum of 1 metre from the front edge of the fire box. This is to stop any burning material falling from the fire box landing onto anything combustible.</li> <li>• Smoke vent/chimneys must have a purpose-built manufactured cap, or maximum of 5 millimetre steel mesh fitted in the top to stop any hot ash or embers from escaping.</li> <li>• Firewood storage must be in areas not affected by heat from the fire and clear of any possible hot ash or ember-affected areas.</li> <li>• You must have a suitable way to extinguish the fire within easy reach – a maximum of 5 metres away.</li> <li>• You must not leave the fire unsupervised while burning, or</li> <li>• It must have a solid or mesh screen/door that prevents any burning material from escaping the fire box.</li> <li>• Fireplaces with external construction made of steel must be at least 1 metre clear of any of any part of a building, hedge, shelter belt or any other combustible material.</li> </ul> <p>If you cannot meet these conditions, you must apply for a permit.</p>
<p>Movable/ portable free-standing front-loading fireplace.</p>	<p>Examples include (but are not limited to) <b>chiminea</b>.</p> <p>A freestanding front-loading fireplace or oven, usually with a bulbous body – usually has a vertical smoke vent or chimney.</p> <p><b>Conditions</b></p> <ul style="list-style-type: none"> <li>• Don't light your fire within 3 metres of any part of a building, hedge, shelter belt or any other combustible material.</li> <li>• You must have a suitable way to extinguish that will easily reach it, a maximum of 5 metres away.</li> <li>• You must not leave the fire unsupervised while burning or</li> <li>• It must have a solid or mesh screen/door that prevents any burning material from escaping the fire box.</li> </ul> <p>If you cannot meet these conditions, you must apply for a permit.</p>
<p>Cultural cooking fires</p>	<p>Examples include hāngi, umu and lovo.</p> <p><b>Conditions</b></p> <ul style="list-style-type: none"> <li>• Your fire area must be less than 4 square metres.</li> <li>• Don't light your fire within 5 metres of any part of a building, hedge, shelter belt or any other combustible material.</li> <li>• You must have a suitable way to extinguish it within easy reach – a maximum of 5 metres from your cultural fire.</li> <li>• You must not leave the fire unsupervised while burning.</li> <li>• On completion of cooking or the purpose required for cooking food the fires must be extinguished.</li> </ul> <p>If you cannot meet these conditions, you must apply for a permit.</p> <p>Find out more about the safe use of cultural cooking fires –<a href="http://fireandemergency.nz">fireandemergency.nz</a> &gt; <a href="#">Traditional or cultural use of fire</a>.</p>

## Authorised fire types on public conservation land in a prohibited fire season

This table lists the fire types that are authorised on public conservation land (PCL) in a prohibited fire season and the conditions for using them. As long as people using these fire types in a prohibited season meet these conditions, they don't need to get a fire permit, because Fire and Emergency doesn't consider them to be fires in open air.

Fire type	Description and conditions
Gas-operated appliances	<p>Manufactured gas-operated appliances, such as barbeques, outdoor fireplaces and outdoor gas heaters.</p> <p>Find out more about the safe use of <a href="#">Gas BBQs, cookers and heaters</a>.</p>

## Permits in prohibited fire seasons or during prohibitions under section 52

Fire and Emergency may grant permits:

- during a prohibited fire season, or
- when there is a prohibition under [section 52](#) of the Act but the fire or activity is necessary to prevent, reduce, or overcome any hazard to life or because of any other serious emergency.

We may grant fire permits during a prohibited fire season if weather or other conditions have temporarily reduced the fire hazard, so as to make it apparently safe to light a fire.

**Note:** Fire and Emergency may grant permits for the purposes of assisting compliance with other legislation such as Bio-security measures. For example:

The Management Agency for the American Foulbrood (AFB) Pest Management Plan implements the Biosecurity (National American Foulbrood Pest Management Plan) Order 1998.

- Where AFB is discovered, beekeepers have an obligation within 7 days of becoming aware of that case to destroy all honeybees, bee products, and appliances associated with that infected honeybee colony by burning.
- If it's a PROHIBITED fire season – Fire and Emergency New Zealand will promptly (24hrs) produce a District Manager-approved special Fire Permit to Burn during a prohibited season, under biosecurity emergency response status.

Permits issued in a prohibited fire season (e.g. for biosecurity reasons) remain active when the fire season changes.

## Applying for a permit

To check if a fire permit is required, use the website [checkitsalright.nz](#). If you need a permit, this site will automatically take you to the fire permits website.

When you know you need a fire permit, you can apply:

- online through Fire and Emergency's fire permitting system – [firepermit.nz](#)
- over the phone – 0800 658 628. Your application is then completed in the online system on your behalf
- in person, by asking local Fire and Emergency fire permitting personnel for a fire permit
- by email or post, using the manual [fire permit application form](#). You can print and complete the form by hand or complete the editable pdf and send it back to us.

## Assessment

The fire permit assessors will make a risk-based decision about whether a desk-based assessment or an on-site inspection of the burn location is required before deciding to grant or refuse the fire permit.

**Note:** Where an application has multiple burn locations, they must consider each location.

The assessor must inspect a permit applications if:

- they have insufficient information to make a desk-based assessment, or
- where any of the following apply to the proposed fire:
  - it is during a prohibited fire season
  - it requires a burn plan
  - it is in a location where the predominant fuel type is considered to be of high flammability
  - it is in a location that is adjacent to areas of significant commercial or environmental values
  - it involves multiple fires burning at the same time in different locations on a property
  - it is located on steep or complex terrain
  - it involves burning large amounts of material unless the applicant has a history of successfully managing similar fires.

The follow additional factors can be considered to be fire risk conditions or relevant fire control matters:

- The environment around the burn site
- The actual site area and boundaries of the proposed burn
- Other property and/or values at risk from a possible escaped fire
- Other relevant hazards
- Time of ignition, light-up sequence and method of the proposed fire
- Potential fire behaviour and rate of fire spread
- Firebreaks around the area to be burnt
- Resources available to carry out the burn safely and effectively
- The applicant's understanding of the risks associated with the proposed fire, and their ability to manage those risks effectively.

Prescribed burn plans may be required for complex and higher-risk burns, e.g. land clearing. They help the person proposing to burn to:

- go through a planning process
- consider how to undertake the proposed fire safely.

The applicant is responsible for developing the [prescribed burn plan](#). However, we can advise them what the plan should contain to carry out the proposed fire safely.

## Mandatory conditions

Every permit must contain standard conditions that are required by the [Fire and Emergency New Zealand \(Fire Permits\) Regulations 2017](#) and cannot be removed. These are:

- You must not light a fire in fire risk conditions that make it likely that the fire will spread beyond the limits of the location or property specified in the permit as the location of the fire.
- If this permit was issued for a proposed fire in an area which is in a restricted fire season:
  - it is suspended if we declare a prohibited fire season or prohibit fire in open air
  - you must, immediately before lighting a fire, make reasonable efforts to confirm that, in the location of the fire:
    - no prohibited fire season is in place; and
    - no prohibition on the lighting of fires in open air is in place.

If the fire permit is issued when fire has been prohibited in open air ([section 52](#) (1) of the Act) the following condition must be included on the permit:

- immediately before lighting a fire you must make reasonable efforts to confirm that no restricted or prohibited fire season under [section 56](#) (1) of the Act is in place in the location of the fire. Use [Checkitsalright.nz](https://www.firepermit.nz).

The permit will also include a condition to notify the Communications Centre immediately before lighting the fire. For example:

- notify us before lighting the fire using the text code or email links provided or at <https://www.firepermit.nz/FENZ/Default.aspx>.
- call **Southern fire communications** on 03 341 0266.

For fire permits where the public are likely to notice the fire call 111, we prefer you notify us electronically.

For example, where the fire :

- is close to a road, or to other houses or buildings
- covers a large area, such as land clearing.

During an open fire season, you can notify us by contacting the [fire communications centre](#), or preferably by clicking **Lighting a fire in an open season** on [firepermit.nz](https://www.firepermit.nz) and completing the **Permit Activation** form

These notifications are flagged within the call centre system, so if they get a 111 call, it's clear there is a permitted/controlled fire.

## Firebreaks

Fire and Emergency has the authority under [section 62](#) of the Act to require landholders to make or clear firebreaks on the landholder's land, or keep them clear if we think it's needed for fire control. This can include green firebreaks, or strips of lower flammability or removing all vegetation down to mineral earth.

Sections [63–68](#) of the Act explain appeal provisions and compliance pathways.

We use our [Firebreaks policy and guideline](#) to apply the relevant science-based calculation to check if a fire break is the right solution. The policy guides us on working closely with affected landholders to work towards a voluntary solution.

Fire and Emergency has powers to:

- require compliance
- make or clear any firebreak
- issue an infringement notice if compliance is not reached voluntarily.

**Note:** This power relates to making and clearing firebreaks outside of incident response – before a fire happens. Our powers during response in [section 43](#) allow us to create firebreaks as needed to prevent the spread of fire.

## Fire hazard removal

Sometimes, Fire and Emergency reasonably considers that vegetation, or some other thing, is a fire hazard, meaning that it is likely to endanger people or property by increasing the risk of outbreak or spread of fire. In these situations, we can require that the vegetation or thing be removed or destroyed.

We will work with affected people to fix the issue first, but we're authorised under [section 65](#) of the Act to legally require action. You then have one month to fix the problem, although you can appeal against the requirement. You must appeal within 14 days and your appeal will be handled through Fire and Emergency's dispute resolution scheme.

Our fire hazard removal powers apply to anything on the land, but not to anything on or inside a building. Local councils have the authority to address fire risk related to buildings, such as hoarding.



If it's urgent (an imminent danger) we can tell you, and immediately fix the problem ourselves to keep people and property safe.

## Reporting fire hazards

Anyone who becomes aware of a fire hazard, or is worried that something is a fire hazard, can report it to Fire and Emergency.

To do this:

1. Go to [Fire hazards in your community](#).
2. Scroll down the page and choose **Submit a Fire Hazard Assessment Request**.
3. At the bottom of the page, under **Report a Potential Fire Hazard**, click **Start process**.
4. Complete the 'Potential Fire Hazard Advice' form.

## Assessment of fire hazards

Fire and Emergency will assess whether there is a potential for the fuel to harm people or damage property if a fire starts. We will assess the likelihood of a fire starting and the consequences in terms of risk to human life, structures and other values.

We use an assessment tool to provide a structured framework for determining whether:

- it is appropriate for us to exercise our fire hazard removal powers under [sections 65–68](#) of the Act
- it is more appropriate to educate the complainant or occupier/owner of the location of the potential fire hazard on how to mitigate risks from fires
- to refer the matter to another jurisdiction
- no further action is required.

## Initial review

The assessor starts by answering four key questions:

- Is the potential hazard:
  - trees close to power lines, or
  - hoarding inside a building?

If yes, then the hazard is referred to the relevant lines company or local council for action.

- Is the material involved likely to pose a risk to life or property through ignition without spreading? This covers fuel types that are likely to endanger adjacent or downwind properties (either through creating significant health concerns or possible contamination damage), without spreading. This could be due to smoke toxicity or high intensity of burning.
- Is there sufficient material of appropriate type and composition to support a fire spreading to adjacent property or values? This captures the spread potential, taking into consideration the physical properties of the fuel as well as the general topography and onsite conditions. That includes continuity, size and shape, fuel load and flammability, as well as likely direction of fire travel.
- Is the burning material likely to produce enough heat to cause damage to property? Gives consideration to the fire having sufficient energy to actually cause damage to property if spread to it, or to compromise the health of property users.

### Risk assessment matrix

If it's appropriate, we then use a risk assessment matrix. This involves:

- assigning a risk of ignition rating, where 'rare' is a low rating and 'almost certain' is a high rating
- assigning a likely consequence rating for each component, and using the highest value of:
  - human life at risk
  - structure at risk
  - other values at risk
- using the risk of ignition and likely consequence ratings to determine the risk assessment score in the matrix

		Likely consequence (highest consequence rating)				
		1	2	3	4	5
Risk of ignition rating	5	5	10	15	20	25
	4	4	8	12	16	20
	3	3	6	9	12	15
	2	2	4	6	8	10
	1	1	2	3	4	5

- using the risk assessment matrix score to determine the next course of action.

Score	Next course of action
1-5	No further action.
6, 8, 9	Consider providing information/education to occupier/owner/complainant on how to mitigate risks from fire.
10, 12	Provide information/education to occupier/owner/complainant on how to mitigate risks from fire.
15, 16	Consider issuing a <i>Fire hazard removal notice (s 65)</i> , otherwise provide information/education to the occupier/owner /complainant on how to mitigate risks from fire.
20, 25	May issue a voluntary compliance letter citing a timeframe to meet that compliance. Failure to comply means the assessor must issue a Fire hazard removal notice (s 65). Consider if an Imminent danger notice (s 68) is appropriate.

### Outcomes from the fire hazard assessment

The assessment will recommend one of the following courses of action:

1. No further action, because the vegetation or other thing does not present a fire hazard, or imminent danger. The matter may be referred to another agency, such as the local council if appropriate, e.g. hoarding or vermin infestation.
2. Providing education and information to the occupier or owner of the land, and/or to the complainant, on how to mitigate any risks from fire. We would do this where the notice threshold has not been reached but the assessment indicates that proactive action would be helpful.
3. Giving the occupier or owner of the land the opportunity to voluntarily mitigate the risk within an appropriate time period. We would do this if the threshold for issuing a Fire hazard removal notice ([section 65](#)) has been met. If the occupier or owner won't do this voluntarily, we will issue them with a Fire hazard removal notice ([section 65](#)). This notice gives them one month to remove or destroy the vegetation or other thing increasing the risk of the outbreak or spread of fire.
4. Give the owner or occupier of the land verbal notice that we are taking immediate action to remove or destroy any vegetation or other thing on the land that is a source of imminent danger under [section 68](#).

We would only use this power when there is an ‘almost certain’ likelihood of a fire starting or spreading at any moment that would put life or property at risk.

**Note:** We will use this power very rarely.

## Powers of entry

We will not enter private property without permission from the occupier other than to knock on the front door or other entry point to find and speak with an occupier.

If the occupier doesn’t give us permission or we can’t find them, we will attempt to assess the potential fire hazard from outside of the property. For example, we might view it from the roadside or from a neighbouring property if the neighbour consents to us entering their property.

If we need to, a Fire and Emergency inspector can enter and inspect land that is not a home or marae (or a building associated with a marae) to determine whether certain materials (including timber, dry plant cuttings and other flammable material) are being stored outside a building in a way that creates a fire hazard to the building, another building, or to any road or other public place (see [regulation 13\(4\)](#) of the [Fire and Emergency New Zealand \(Fire Safety, Evacuation Procedures, and Evacuation Schemes\) Regulations 2018](#)).

A Fire and Emergency inspector must obtain a warrant to enter and inspect land that is a home or marae (or a building associated with a marae).

We can take photographs of private land (or things on private land) from public land as long as we don’t take pictures of an area or thing that a person can reasonably expect to be private (e.g. a photo that includes a view into a shower or a secluded area where someone is sunbathing).

## Fire hazard removal notice (section 65)

A fire hazard removal notice ([section 65](#)) is formal written notification under [section 65](#) of the Act to an occupier or owner of land that they must remove or destroy the ‘vegetation or other thing’ that we’ve assessed as meeting the threshold for issuing a notice.

The notice:

- describes the vegetation or other thing that must be removed or destroyed, including a map if practicable identifying the specific location or extent of the vegetation or other thing
- explains the risk that Fire and Emergency reasonably considers that the vegetation or other thing presents
- specifies the actions that must be taken to mitigate the fire hazard risk, e.g. how much vegetation must be removed or destroyed.

Before we issue a fire hazard removal notice, we will always try to negotiate with the occupier or owner to give them an opportunity to fix the issue voluntarily.

The occupier of the land where the fire hazard is located is primarily responsible for removing or destroying it. If the land is unoccupied, then the responsibility passes to the owner of the land.

Occupier, in relation to any place or land, means any person in lawful occupation of that place or land; and includes any employee or other person acting under the authority of any person in lawful occupation of that place or land.

## Imminent danger notice (section 68)

An Imminent danger notice is verbal notification under [section 68](#) of the Act to an occupier or owner of land that Fire and Emergency is going to enter the land and remove or destroy any vegetation or other thing on land that we consider is a source of imminent danger from fire to life, property, or any road.

Anyone receiving the verbal notice should be able to understand:

- that Fire and Emergency has decided that [description of fire hazard] is a source of imminent danger to [life, property, and/or road]
- why the fire hazard is a source of imminent danger
- that Fire and Emergency has arranged for the [removal or destruction] of the fire hazard under [section 68](#) of the Act by [name of contractor] on [date]
- any arrangements for the storage of items removed from the land, and the terms under which the owner/occupier can retrieve those items.

In the event of an actual fire, we can use all of our powers to deal with the emergency, including [sections 42 and 43](#) to remove vegetation or material without telling you.

## Regulatory compliance

### Fire and Emergency's role

The Act gives Fire and Emergency compliance and enforcement responsibilities, and powers to support interventions in cases of non-compliance. In line with this, we have developed a comprehensive [Risk Reduction Strategy](#), supported by a Regulatory compliance policy. Our [Regulatory compliance guide](#) has details of our approach to compliance.

Our compliance activities generally focus on education and awareness first, followed by issuing warnings. If compliance is still an issue, then we may use more formal enforcement powers.

If there are cases of serious or repeated non-compliance, we may use infringement notices or prosecute. For more information on our regulatory compliance policies and procedures and other relevant topics, visit [Regulatory compliance](#).

## Contact Fire and Emergency

### In case of an emergency please call 111

### General enquiries and questions

- Recruitment/volunteering
- Fire safety information
- Fire permits and seasons
- Evacuation schemes
- Request for access to the site of an emergency.

[Submit a general enquiry or question](#) or call 04 496 3600.

### Lodge a complaint

<https://www.fireandemergency.nz/contact-us/complaints/>

### Fire hazards

- Complete [this online form](#)
- You can also call the Regulatory Compliance Group on 0800 336 942.

## Local contacts for this plan

To communicate with the District team for this fire plan please email [RiskReductionBayOfPlenty@fireandemergency.nz](mailto:RiskReductionBayOfPlenty@fireandemergency.nz)

## Glossary

**4Rs** – Reducing risk, ensuring response readiness, providing emergency response and making coordinated efforts to enable recovery following an emergency.

**Anabatic Winds** – These Winds are upslope winds driven by warmer surface temperatures on a mountain slope than the surrounding air column.

**Build-up Index (BUI)** – A component of the Fire Weather System. This index shows the amount of fuel available for combustion, indicating how the fire will develop after the initial spread. It is calculated using the Duff Moisture and Drought Code.

**Duff Moisture Code (DMC)** – A numerical rating of the average moisture content of loosely compacted organic layers of moderate depth. This code gives an indication of fuel consumption in moderate duff layers and medium-size woody material.

**Firebreak** – A natural or artificial physical barrier against the spread of fire from or into any area of continuous flammable material – e.g., a track bulldozed clear of all vegetation.

**Fire control** – Preventing, detecting, controlling, and putting out fire, and protecting persons and property from fire.

**Fire control powers** – Our ability to legally require people to stop doing things that increase the risk of a fire – e.g. restricting where and when they can use fire, requiring vegetation to be removed to prevent the spread of fire, etc.

**Fire danger** – A rating of how difficult a fire will be to control once it starts – e.g. low to extreme: low being easy to contain, extreme very difficult to contain.

**Fire Danger Rating System** - A relative class denoting the potential rates of spread, or suppression difficulty for specific combinations of temperature, relative humidity, drought effects and wind speed, indicating the relative evaluation of fire danger.

**Fire environment** – The surrounding conditions, influences, and modifying forces of topography, fuel, and weather that determine fire behaviour.

**Fire hazard** – Vegetation or other thing on the land that Fire and Emergency reasonably considers likely to endanger persons or property by increasing the risk of the outbreak or spread of fire.

**Fire in open air** – Fire that isn't in a fireplace in a building or structure or isn't in something else that Fire and Emergency says is not in the open air.

**Fire risk conditions** - Weather or other conditions that will, or are likely to, endanger persons or property by increasing the risk of the outbreak or spread of fire.

**Fire seasons** – Period when we restrict or prohibit the use of fire in the open air. Areas that are not in a Restricted or Prohibited fire season are in an Open fire season. Can also refer to the October to May period when fires are more likely.

**Fire weather** – Weather conditions which influence fire ignition, behaviour and suppression.

**Fire Weather System** – Numerical values that indicate weather and fuel conditions that influence fire behaviour, which feeds into the Fire Danger Rating System.

**Grass curing (GC)** – A component of the Fire Weather System. Grass goes through a natural process where after flowering/seeding it changes colour as it dies off. This process is known as 'curing.' The degree of curing (%) is the portion of dead grass vs live. Dead grass allows fire to spread easily.

**Important Bird Areas (IBAs)** – Sites recognised as internationally important for bird conservation and known to support key bird species and other biodiversity. Legal protection, management and monitoring of these crucial sites are all important targets for action. Many bird species may be effectively conserved by these means.

**Katabatic Winds** – Katabatic winds are downslope winds created when the mountain surface is colder than the surrounding air and creates a downslope wind.

**Land cover** – What covers the land – trees, grasslands, scrub, residential property.

**Land use** – How the land is used – e.g. primary production (farming), forestry, residential, industrial.

**Local area** – The area within the boundaries of a local advisory committee that are set in accordance with [section 16](#) of the Act.

**Primary production** – Livestock farming for dairy, meat and wool. Horticulture, including kiwifruit, apples, avocados, grapes for wine production, vegetables, arable and seed crops, other horticultural crops, cut flowers, and other animal products. Also includes forestry, but this is dealt with separately in fire plans.

**Public conservation land (PCL)** – Land used for conservation purposes, including National Parks and forest parks. Often managed by Department of Conservation or the regional council.

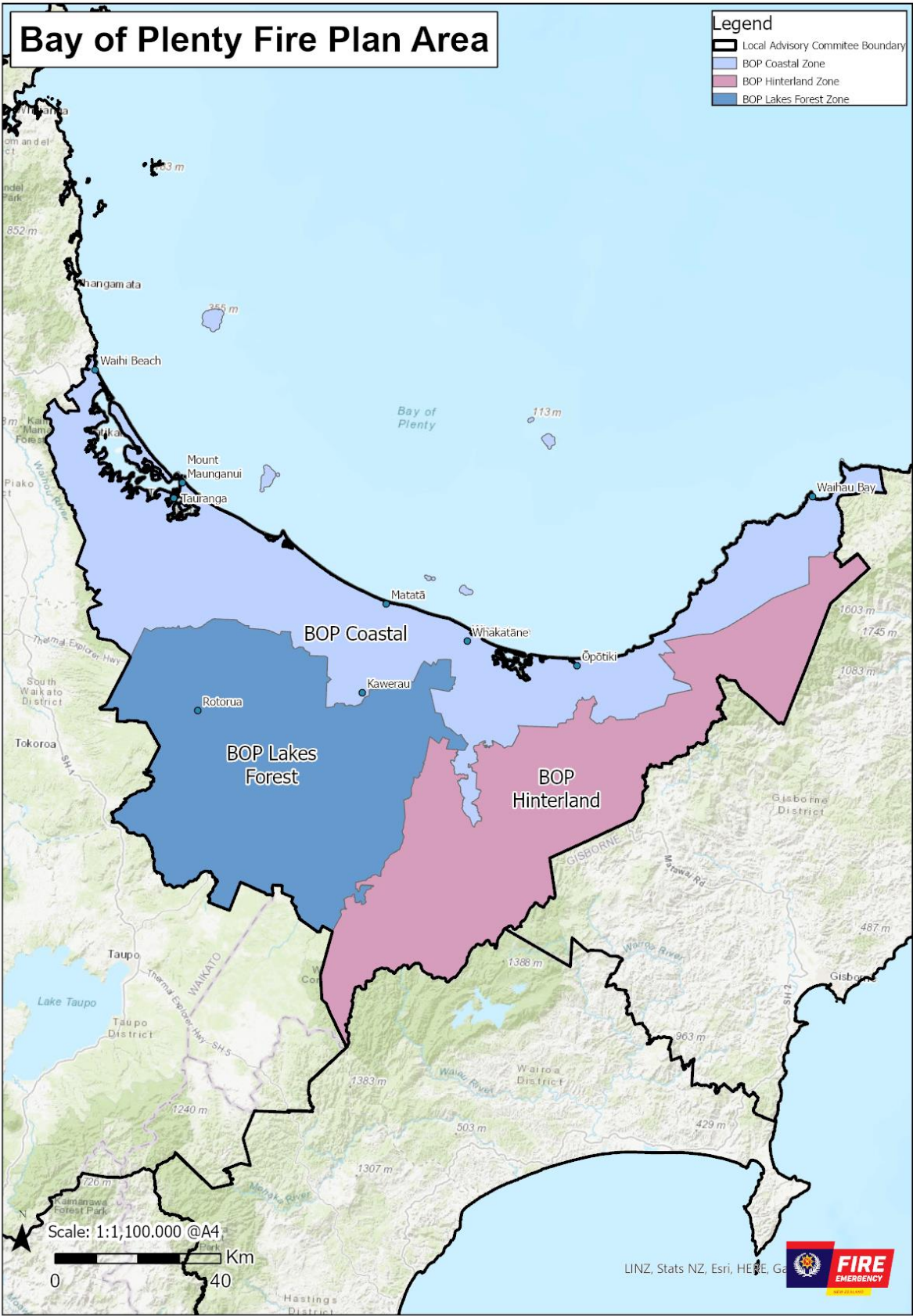
**Remote Automatic Weather Station (RAWS)** – Weather station that automatically provides the data used to determine weather and fuel conditions. Results are available from <https://fireweather.niwa.co.nz> and products such as Eco Connect.

**Scientific Reserves** – Per the [Reserves Act 1977](#), the principal purpose of these reserves is the protection and preservation in perpetuity of areas for scientific study, research, education and the benefit of the country.



# Bay of Plenty District information

This section has the information specific to this fire plan area, including an overview of the area as a whole, and more detailed information for each of the zones within the area.



## Area overview

### Geography

This fire plan covers 2.35 million hectares, consisting of an estimated 0.80 million hectares of agricultural lands, 1.05 million hectares of conservation lands and 0.50 million hectares of commercial forestry.

Major transport routes include State Highways 1, 2, 5, 29, 30, 32, 33, 35, 36, 38, 41, 46 and 47, and rail links such as the East Coast Main Trunk between Murupara, Kawerau and the Port of Tauranga. The area is well serviced by electrical and natural gas supply lines, which originate from outside the region.

There are several areas of special note in terms of fire threat within the area. These include residential villages and other recreational areas, industrial sites, national parks, populated and unpopulated islands, coastal areas, orchards and large pack houses, and transport and distribution networks.

This fire plan covers the area bounded by the Kaimai and Mamaku Ranges in the west, the Huiarau and Raukūmara Ranges in the east, and by the Pacific Ocean to the north. The Bay of Plenty area is geographically diverse. Volcanic landscapes dominate the area from Rotorua south towards Taupō, and heavily forested ranges cover a vast area in Te Urewera and Raukūmara Ranges. The coastal lowlands extend from Waihi Beach in the northwest to Whangaparaoa Bay in the east. Large parts of the volcanic plateau are now covered by exotic pine plantations. The coastal strip supports a large dairying and horticulture industry.

### Demographics

**At Fire and Emergency, we strive to develop an ongoing knowledge of the demographics for each of the communities we serve and how these communities are changing over time. Working with key agencies, we use these demographics to help us to understand how our communities use fire, the type of support they might need and how we communicate with them.**

**The Bay of Plenty area has a high population density in the west and a low population density in the east. These include isolated populations which may have a single access to their dwellings.**

**The area has a higher-than-average percentage of people over the age of 65, particularly in the Western Bay of Plenty.**

**During the summer holiday period, and especially during Christmas and New Year, the population swells, with tourists enjoying the numerous beaches and warm climate.**

**The area has a population of approximately 308,488 people. (Data source taken from the Census 2018)**

Age group	% of population.	Ethnicity	% of population
Under 15	21%	European	74%
15–29	17%	Māori	29%
30–64	43%	Pacific Islands	4%
65+	18%	Asian	7%
		Other ethnicities	2%



---

**Zones**

The area is divided into a number of different fire season zones because there are different fire risk conditions in different parts of the fire plan area. This allows appropriate fire control measures to be applied locally:

- [Bay of Plenty \(BOP\) Coastal](#)
- [Bay of Plenty \(BOP\) Lakes Forest](#)
- [Bay of Plenty \(BOP\) Hinterland](#)
- [Public Conservation Land and Additional Lands](#) under conservation management
- [Forestry zones](#)

Each zone is described and its relevant trigger thresholds and other factors for changing fire seasons are listed in the Appendices.

The area cover in this Bay of Plenty Fire Plan is based on the Bay of Plenty Local Advisor Committee area. It does not include the areas of Taupo, Turangi and Tokoroa which are included in the Waikato Fire Plan – Central North Island Zone. ([Hyperlink](#))

---

**Defence areas**

Fire and Emergency has entered into an operational service agreement with the New Zealand Defence Force. The New Zealand Defence Force exercises fire control powers in relation to certain Defence Areas listed in a schedule to the agreement, where they have their own fire plans.

None of the scheduled Defence Areas are in the Bay of Plenty local area. Any New Zealand Defence Force activities, including training activities, in other Defence Areas are subject to Fire and Emergency's fire permit requirements, though not our other fire control powers.

---

**Frequency of elevated fire danger**

On average, this area experiences:

- 4.6 of days of extreme fire danger
  - 11 of days of very high fire danger
  - (Based on Scion fire danger climate data for seasonal severity.)
- 

**Fire history**

The known fire history for this area is listed in each of the zone profiles.

---

## Schedule of stakeholders

This schedule of stakeholders includes those who should be involved in the creation of these fire plan and their amendments or consulted before making use of the powers of section 52 of the Fire and Emergency New Zealand Act 2017 or notified when this happens. Zone-level stakeholders are listed with each zone description.

When we say...	What we mean is...
Consult while amending plan	You will have the opportunity for input into the fire plan before it is released for public consultation. Can include workshops and other opportunities to contribute.
Public consultation	You will have the opportunity to comment during the four-week public consultation period.
Consult during decision making	The plan to change to a prohibited fire season or use section 52 will be discussed with you before it is implemented.
Notify of decision	You will be contacted directly when there is a change to a prohibited fire season, or when section 52 is implemented.
Notify using public channels	You will find out about the change in fire season etc. the same way as other members of the public.
Notify via normal channels	This is relationship based, at either national or local level where existing relationships and engagement arrangements are used.

## National-level stakeholders

Stakeholders who have an interest in this fire plan area but are managed at national level.

Stakeholder	Fire plan development	Fire plan amendment	Fire season changes Restricted or prohibited. Moving to, or revoking	Section 52 fire prohibitions	Section 52 restrictions/ prohibitions on activities
Department of Conservation	Consulted while creating plan	Consult while amending plan	Consult during decision making	Consult during decision making	Consult during decision making
New Zealand Defence Force	Consulted while creating plan	Consult while amending plan	Consult during decision making	Consult during decision making	Consult during decision making
Environmental Protection Authority	Consulted while creating plan	Consult while amending plan	Notify using public channels	Notify using public channels	Notify using public channels
Federated Farmers of New Zealand	Public consultation	Consult while amending plan	Consult during decision making	Consult during decision making	Consult during decision making

Stakeholder	Fire plan development	Fire plan amendment	Fire season changes Restricted or prohibited. Moving to, or revoking	Section 52 fire prohibitions	Section 52 restrictions/ prohibitions on activities
Toitū Te Whenua Land Information New Zealand	Consulted while creating plan	Consult while amending plan	Notify using public channels	Notify using public channels	Notify using public channels
Taituarā – Local Government Professionals Aotearoa (formerly Society of Local Government Managers (SOLGM))	Consulted while creating plan	Consult while amending plan	Notify using public channels	Notify using public channels	Notify using public channels
Local Government New Zealand (LGNZ)	Consulted while creating plan	Consult while amending plan	Notify using public channels	Notify using public channels	Notify using public channels
Forest Owners Association	Consulted while creating plan	Consult while amending plan	Consult during decision making	Consult during decision making	Consult during decision making
Ministry for Primary Industries: <ul style="list-style-type: none"> <li>• Te Uru Rākau New Zealand Forest Service</li> <li>• Crown Forestry</li> </ul>	Consulted while creating plan	Consult while amending plan	Notify of decision	Notify of decision	Consult during decision making
NZ Farm Forestry Association	Public consultation	Consult while amending plan	Consult during decision making	Consult during decision making	Consult during decision making
Te Puni Kōkiri	Public consultation	Consult while amending plan	Notify using public channels	Notify using public channels	Notify using public channels
Ngā Whenua Rāhui	Public consultation	Consult while amending plan	Notify using public channels	Notify using public channels	Notify using public channels
Waka Kotahi NZ Transport Agency	Public consultation	Consult while amending plan	Notify using public channels	Notify using public channels	Consult during decision making
Ngā Pirihimana O Aotearoa New Zealand Police	Public consultation	Consult while amending plan	Notify using public channels	Notify using public channels	Consult during decision making
Ministry of Business, Innovation and Employment (MBIE)	Public consultation	Consult while amending plan	Notify using public channels	Notify using public channels	Consult during decision making

Stakeholder	Fire plan development	Fire plan amendment	Fire season changes Restricted or prohibited. Moving to, or revoking	Section 52 fire prohibitions	Section 52 restrictions/ prohibitions on activities
Manaaki Whenua – Landcare Research	Public consultation	Consult while amending plan	Consult while amending plan	Consult while amending plan	Consult during decision making

If your organisation should be involved in fire plans at a national level, please contact us.

### Area-level stakeholders

This list is for stakeholders who have an interest across the fire plan area. Fire and Emergency undertakes to consult as indicated for each zone's stakeholders.

Stakeholder	Fire plan development	Fire plan amendment	Fire season changes Restricted or prohibited. Moving to, or revoking	Section 52 fire prohibitions	Section 52 restrictions/ prohibitions on activities
Department of Conservation	Consulted while creating plan	Consult while amending plan	Consult during decision making and notify of decision	Consult during decision making and notify of decision	Notify via normal channels
NZ Forest Managers	Consulted while creating plan	Consulted while amending plan	Notify using normal channels	Notify using normal channels	Notify via normal channels
Timberlands	Consulted while creating plan	Consult while amending plan	Consult during decision making and notify of decision	Consult during decision making and notify of decision	Notify via normal channels
Rayonier	Consulted while creating plan	Consult while amending plan	Consult during decision making and notify of decision	Consult during decision making and notify of decision	Notify via normal channels
Port Blakely	Consulted while creating plan	Consult while amending plan	Consult during decision making and notify of decision	Consult during decision making and notify of decision	Notify via normal channels
Manulife Investment Management	Consulted while creating plan	Consult while amending plan	Consult during decision making and notify of decision	Consult during decision making and notify of decision	Notify via normal channels

Stakeholder	Fire plan development	Fire plan amendment	Fire season changes Restricted or prohibited. Moving to, or revoking	Section 52 fire prohibitions	Section 52 restrictions/ prohibitions on activities
Crown Forestry (Ministry for Primary Industries)	Consulted while creating plan	Consult while amending plan	Notify via normal channels	Notify via normal channels	Notify via normal channels
Manuka Biologicals	Consulted while creating plan	Consult while amending plan	Consult during decision making and notify of decision	Consult during decision making and notify of decision	Notify via normal channels
Te Uru Rākau – New Zealand Forest Service	Consulted while creating plan	Consult while amending plan	Consult during decision making and notify of decision	Consult during decision making and notify of decision	Notify via normal channels
Te Puni Kōkiri	Public consultation	Consult while amending plan	Consult during decision making and notify of decision	Consult during decision making and notify of decision	Notify via normal channels
Oji Fibre Solutions	Public consultation	Consult while amending plan	Consult during decision making and notify of decision	Consult during decision making and notify of decision	Notify using public channels
PF Olsen Ltd	Consulted while creating plan	Consult while amending plan	Consult during decision making and notify of decision	Consult during decision making and notify of decision	Notify via normal channels
Public	Public consultation	Public consultation	Notify using public channels	Notify using public channels	Notify using public channels
<b>Coastal specific</b>					
Bay of Plenty Regional Council	Consulted while creating plan	Consult while amending plan	Notify using public channels	Notify using public channels	Notify of decision
Ernslaw One Ltd	Consulted while creating plan	Consult while amending plan	Consult during decision making and notify of decision	Consult during decision making and notify of decision	Notify of decision
Federated Farmers of New Zealand	Consulted while creating plan	Consult while amending plan	Notify using public channels	Notify using public channels	Notify of decision
Kawerau District Council	Consulted while creating plan	Consult while amending plan	Notify using public channels	Notify using public channels	Notify of decision

Stakeholder	Fire plan development	Fire plan amendment	Fire season changes Restricted or prohibited. Moving to, or revoking	Section 52 fire prohibitions	Section 52 restrictions/ prohibitions on activities
Ngā Whenua Rāhui – Ōpōtiki	Consulted while creating plan	Consult while amending plan	Notify using public channels	Notify using public channels	Notify of decision
Ōpōtiki District Council	Consulted while creating plan	Consult while amending plan	Notify using public channels	Notify using public channels	Notify of decision
Potikirua Trust	Public consultation	Consult while amending plan	Consult during decision making and notify of decision	Consult during decision making and notify of decision	Notify of decision
Tūwharetoa Trust	Public consultation	Consult while amending plan	Consult during decision making and notify of decision	Consult during decision making and notify of decision	Notify of decision
Tauranga City Council	Consulted while creating plan	Consult while amending plan	Notify using public channels	Notify using public channels	Notify of decision
Western Bay of Plenty District Council	Consulted while creating plan	Consult while amending plan	Notify using public channels	Notify using public channels	Notify of decision
Whakatāne District Council	Consulted while creating plan	Consult while amending plan	Notify using public channels	Notify using public channels	Notify of decision
<b>Lakes Forest specific</b>					
Ngā Whenua Rāhui	Consulted while creating plan	Consult while amending plan	Consult during decision making and notify of decision	Consult during decision making and notify of decision	Notify using public channels
Federated Farmers of New Zealand	Consulted while creating plan	Consult while amending plan	Notify of decision	Notify using public channels	Notify of decision
Kaingaroa Timberlands Ltd Rotorua	Consulted while creating plan	Consult while amending plan	Consult during decision making and notify of decision	Consult during decision making and notify of decision	Notify of decision
Rotorua Lakes Council	Consulted while creating plan	Consult while amending plan	Notify of decision	Notify using public channels	Notify of decision
<b>Hinterland specific</b>					

Stakeholder	Fire plan development	Fire plan amendment	Fire season changes Restricted or prohibited. Moving to, or revoking	Section 52 fire prohibitions	Section 52 restrictions/ prohibitions on activities
Te Whakatōhea	Public consultation	Consult while amending plan	Consult during decision making and notify of decision	Consult during decision making and notify of decision	Notify of decision
Te Whānau-ā- Apanui	Public consultation	Consult while amending plan	Consult during decision making and notify of decision	Consult during decision making and notify of decision	Notify of decision
Ngāti Whare	Public consultation	Consult while amending plan	Consult during decision making and notify of decision	Consult during decision making and notify of decision	Notify of decision
Ngāti Manawa	Public consultation	Consult while amending plan	Consult during decision making and notify of decision	Consult during decision making and notify of decision	Notify of decision
Federated Farmers of New Zealand	Public consultation	Consult while amending plan	Notify via normal channels	Notify via normal channels	Notify via normal channels
Te Uru Taumatua (TUT)	Consulted while creating plan	Consult while amending plan	Notify of decision	Notify of decision	Notify of decision

If your organisation should be involved in fire plans and has an interest across the whole fire plan area, please contact us about being added to this list.

## Zone information

### Bay of Plenty (BOP) Coastal Zone

**Geography** The BOP Coastal zone extends from Waihi Beach in the northwest to Whangaparoa Bay in the east, covering the coastal lowlands, including populated and unpopulated islands. The coastal strip supports a large dairying, exotic pine plantations and horticulture industry and much of this area is best known for its kiwifruit, avocado and citrus orchards.

**Demographics** Demographics help us understand how our communities use fire, the type of support they might need, and how we communicate with them.

**The zone contains numerous coastal towns and settlements that are increasingly popular with tourists throughout the summer months. Tauranga is the main population centre for this zone, accounting for approximately 45 percent of the total area population, with an ever-increasing and ageing population.**

**Climate/weather** Due to the shelter from the high country, the Bay of Plenty's Coastal Zone climate is one of the sunniest and least windy in New Zealand. It has high annual rainfall compared to some eastern parts of the country, although rainfall levels vary a lot. Temperatures also vary considerably. The coastal margins and offshore islands can dry out rapidly due to sandy soils and coastal winds.

**Land cover/  
land use**

Land cover	Hectares
<b>Artificial surfaces</b>	
Built-up area (settlement)	9,990
Surface mine or dump	370
Transport infrastructure	126
Urban parkland/open space	1,881
	<b>12,366</b>
<b>Bare or lightly vegetated surfaces</b>	
Sand or gravel	430
Landslide	29
Gravel or rock	1,259
	<b>1,718</b>
<b>Water bodies</b>	
Lake or pond	338
River	1,725
Estuarine open water	4,839
	<b>6,902</b>
<b>Croplands</b>	
Short-rotation cropland	7,369



Orchard, vineyard or other perennial crop	20,264
	<b>27,633</b>
<b>Grassland, sedge and saltmarsh</b>	
High-producing exotic grassland	162,317
Low-producing grassland	4,601
Herbaceous freshwater vegetation	1,533
Herbaceous saline vegetation	1,098
Flaxland	1
	<b>169,550</b>
<b>Scrub and scrubland</b>	
Fernland	126
Gorse and/or broom	1,049
Mānuka and/or kānuka	14,172
Broadleaved indigenous hardwoods	12,079
Mixed exotic scrubland	530
Matagouri or grey scrub	218
	<b>28,174</b>
<b>Forest</b>	
Deciduous hardwoods	950
Exotic forest	54,357
Forest – harvested	6,679
Indigenous forest	143,612
Mangrove	1,103
	<b>206,701</b>
<b>Other</b>	
Not land	21

**Industry**

Industry	Contributes to increased risk of fire in high-risk conditions	Affected by use of fire control measures	Needs to be protected by using fire control measures
Primary production, including horticulture and agriculture Use of machinery – sparks <ul style="list-style-type: none"> <li>• Use of fire for land management</li> <li>• Relevant operations affected</li> </ul>	☒	☒	☒
Forestry <ul style="list-style-type: none"> <li>• Use of machinery – sparks</li> <li>• Relevant operations affected</li> <li>• Use of firebreaks</li> </ul>	☒	☒	☒
Apiculture (beekeeping) <ul style="list-style-type: none"> <li>• Use of smoke</li> </ul>	☒	☒	☒

<ul style="list-style-type: none"> <li>• Use of fire to destroy infested hives</li> <li>• Impacted by restrictions on activities for suppliers</li> </ul>			
<p>Tourism and recreation</p> <ul style="list-style-type: none"> <li>• People unfamiliar with local fire risk and rules</li> <li>• Access to locations may be restricted</li> </ul>	☒	☒	☒
<p>Major Hazard Facilities (MHF)</p> <ul style="list-style-type: none"> <li>• Use of machinery – sparks</li> <li>• Relevant operations affected</li> </ul>	☒	☒	☐
<p>Dairy industry</p> <ul style="list-style-type: none"> <li>• Use of machinery – sparks</li> <li>• Relevant operations affected</li> </ul>	☒	☒	☐
<p>Major industrial including pulp and paper mill</p> <ul style="list-style-type: none"> <li>• Use of machinery – sparks</li> <li>• Relevant operations affected</li> </ul>	☒	☒	☐
<p>Mānuka processing</p> <ul style="list-style-type: none"> <li>• Use of machinery – sparks</li> <li>• Relevant operations affected</li> </ul>	☒	☒	☐
<p>Packing houses and cool stores</p> <ul style="list-style-type: none"> <li>• Use of machinery – sparks</li> <li>• Relevant operations affected</li> </ul>	☒	☒	☐
<p>Mining</p> <ul style="list-style-type: none"> <li>• Use of machinery – sparks</li> <li>• Relevant operations affected</li> </ul>	☒	☒	☐

**Lifeline utilities/other infrastructure**

Lifeline utility/other infrastructure	Contributes to increased risk of fire in high-risk conditions	Affected by use of fire control measures	Needs to be protected by using fire control measures
<p>Electricity transmission lines</p> <ul style="list-style-type: none"> <li>• Sparking during high winds</li> <li>• Use of auto-reclosers limited in high fire danger</li> <li>• Recommended vegetation mitigation practices</li> </ul>	☒	☒	☐
<p>Railway line</p> <ul style="list-style-type: none"> <li>• sparks from trains and maintenance equipment</li> <li>• relevant operations affected</li> <li>• recommended best practice – water carts wetting rail corridors</li> </ul>	☒	☒	☐
<p>Roading network</p> <ul style="list-style-type: none"> <li>• Sparks from vehicle malfunction, discarded cigarettes</li> <li>• Spark-causing activities during road maintenance and mowing</li> </ul>	☒	☒	☐
<p>Natural gas distribution network</p> <ul style="list-style-type: none"> <li>• Gas leaks</li> <li>• Protected by own controls on use of fire and other activities in vicinity</li> </ul>	☒	☒	☒
<p>Port of Tauranga and surrounding owned land</p> <ul style="list-style-type: none"> <li>• Use of machinery – sparks</li> <li>• Relevant operations affected</li> </ul>	☒	☒	☐
<p>Bulk fuel storage</p> <ul style="list-style-type: none"> <li>• use of machinery – sparks</li> <li>• relevant operations affected</li> </ul>	☒	☒	☐
<p>Electricity generation – gas, hydro and geothermal</p> <ul style="list-style-type: none"> <li>• Sparking during high winds</li> <li>• Use of auto-reclosers limited in high fire danger</li> <li>• Recommended vegetation mitigation practices</li> </ul>	☒	☒	☒
<p>Communications networks/towers</p> <ul style="list-style-type: none"> <li>• Sparking during high winds</li> <li>• Recommended vegetation mitigation practices</li> </ul>	☒	☒	☒

**Recreational locations**

Recreational locations that will be affected by Fire and Emergency exercising its fire control powers.

- Parks that may be closed
- Sporting locations that may be impacted:
  - Mountain biking
  - Motorsport.

**Cultural and recreational activities and events**

Tangata whenua have very strong ties to their whenua (land) and culture, and value being able to use their whenua without unnecessary restrictions.

We will consult with tangata whenua and consider the needs of iwi when making decisions about implementing restrictions or prohibitions with our fire control powers. The relevant iwi for this zone are listed as stakeholders.

Large-scale events that might be cancelled because a restriction on activities can have a significant economic impact.

Restrictions or prohibitions on fire hazardous activities should not impose any unreasonable restrictions on people living and enjoying recreational activities in this zone.

Cultural and recreational activities and events	Contributes to increased risk of fire in high-risk conditions	Affected by use of fire control measures	Needs to be protected by using of fire control measures
Cultural cooking, e.g. hāngī	☒	☒	☐
Fireworks <ul style="list-style-type: none"> <li>• Use may be prohibited during high fire danger</li> <li>• Pyrotechnics managed by other approvals</li> </ul>	☒	☒	☐
Hunting <ul style="list-style-type: none"> <li>• Campfires</li> <li>• Access may be restricted during high fire danger</li> </ul>	☒	☒	☐
Mountain biking, horse-riding, back country running <ul style="list-style-type: none"> <li>• Access may be restricted during high fire danger</li> <li>• Access maybe through remote areas</li> </ul>	☒	☒	☐
Pig hunting and deer stalking <ul style="list-style-type: none"> <li>• Hunters singeing pigs</li> <li>• Use of off-road vehicles – hot exhausts in long grass</li> </ul>	☒	☒	☐
Concerts and festivals and other events such as Diwali and Matariki <ul style="list-style-type: none"> <li>• Fireworks</li> </ul>	☒	☒	☐

	<ul style="list-style-type: none"> <li>• Fire seasons and other controls may affect some parts of the events</li> </ul>			
	<ul style="list-style-type: none"> <li>• Large sporting events</li> <li>• Access to some sites may be restricted in high fire danger.</li> </ul>	☒	☒	☐
<b>Special risk areas</b>	<b>Special risk area</b>	<b>Contributes to increased risk of fire in high risk conditions</b>	<b>Affected by use of fire control measures</b>	<b>Needs to be protected by using of fire control measures</b>
	<ul style="list-style-type: none"> <li>• Public conservation land</li> <li>• Ecological values at risk</li> <li>• In own zone to apply separate controls</li> </ul>	☒	☐	☒
	<ul style="list-style-type: none"> <li>• Outer islands of Bay of Plenty</li> <li>• Ecologically significant</li> </ul>	☐	☒	☒
	<ul style="list-style-type: none"> <li>• Archaeological and culturally sensitive sites (wāhi tapu)</li> <li>• Access may be restricted</li> </ul>	☐	☒	☒
	<ul style="list-style-type: none"> <li>• Non-DOC conservation areas</li> <li>• Ecologically significant</li> <li>• Consider fire breaks and fuel reduction practices.</li> </ul>	☐	☒	☒
	<ul style="list-style-type: none"> <li>• Beaches</li> <li>• Campfires</li> <li>• Ecologically significant</li> </ul>	☒	☒	☒

Areas of high value that may adjust when we exercise our fire control powers, e.g. due to lower appetite for risk. Can include public conservation lands in zone.

**Known fire hazards** There are no long-term fire hazards listed in this zone in the Fire Hazard Removal Case Management System.

**High-risk communities** These are communities that are at high risk in the event of a wildfire. These communities may be surrounded by high fuel loadings that are especially vulnerable to fire spread and/or have limited access into or out of the community.

**Bay of Plenty Coastal Zone high-risk communities**

- Hiwarau
- Ōhiwa/Bryans Beach
- Kawerau
- Matakana Island

**Frequency of elevated fire danger** On average, this zone experiences:

- 7.3 day per year at Very High
- 3.2 days per year at Extreme (based on Scion fire danger climate data for seasonal severity)

**Fire history**

The known fire history for this zone for significant wildfires or fires caused by activities regulated by our fire control powers includes:

Year	Fire	Cause
2019	Tawera	Natural
2020	Matakana Island	Cooking/warming
2020	Poike	Suspicious
2021	Kawerau	Suspicious
2022	Matakana Island	Burn-off

**Predominant fuel type**

The predominant fuel type in this zone is grass with large amounts of scrub and pockets of production forest.

**Thresholds**

**Fire seasons**

Build-up Index (BUI) and the degree of grass curing (GC%) are the most relevant fire weather indices to monitor where there is a mixture of forestry and grasslands as the predominant fuel types.

**Please note:**

There has been a change in threshold triggers from the previous Fire Plan 2021-2024. As result from consultation, it has been agreed that the trigger for the BUI level be changed from Open to Open/Restricted at 0 - 50% Grass Curing, Restricted at 50-80% Grass Curing, and Prohibited at >80% Grass curing, be lowered from BUI 40 to BUI 35. This is based on better fire control measures in this zone, due to greater fire fuel availability at BUI 35 based on fuel types available and the difficulty to bring fire at greater than 35 BUI under control.

**Local table.**

Grass Curing (GC%) (%)	Build Up Index (BUI)		
	0–35	35–60	> 60
0–50	Open	Open/Restricted	Restricted/ Prohibited
50–80	Open/Restricted	Restricted	Prohibited
> 80	Restricted/ Prohibited	Prohibited	Prohibited

**Interpreting this matrix:**

Open	Open fire season
Open/Restricted	Open fire season, but we may move to a restricted season earlier if forecast conditions support this.
Restricted	Restricted fire season
Restricted/Prohibited	Restricted fire season, but we may move to a prohibited season earlier if forecast conditions support this or stay in a prohibited season longer if grasses remain dry and cured.
Prohibited	Prohibited fire season

**Prohibition on fires in open air (section 52)**

We can use the same Fire Weather System trigger thresholds for prohibiting fires in the open air under section 52 as we do for changing to a prohibited fire season. We use section 52 when the fire risk conditions are not expected to last long enough to make changing to a prohibited fire season practical.

**Prohibitions or restrictions on activities (section 52)**

Localised trigger thresholds for applying section 52 to activities have not yet been developed. However there are some local mitigations used to reduce the need to implement it.

Advice is available through Checkitsalright.nz for when to avoid certain activities that may be of risk for causing a wildfire. Noting these are voluntary restrictions – it is envisaged the majority of public will follow this. Where there is an elevated risk or public are not following this advice, imposing prohibitions or restrictions on activities is a tool available to us.

**Representative remote automated weather stations**

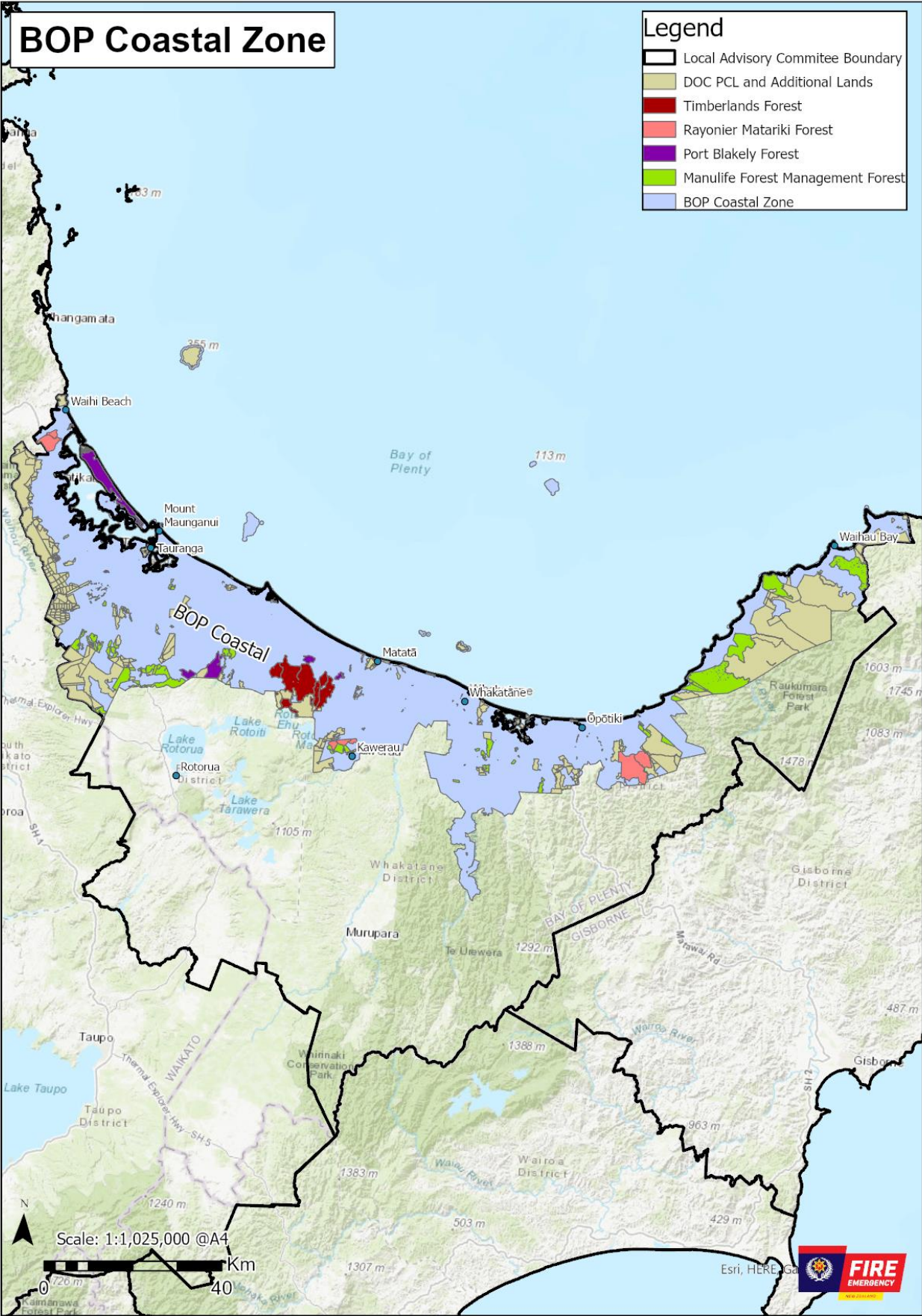
The Remote Automated Weather Station (RAWS) used to determine whether we have reached the trigger thresholds are:

- Waihi Beach
- Kawerau
- Waimana
- Tauranga Aero
- Whakatāne
- Ōpōtiki
- Minden
- Waihau Bay
- Maungaroa
- TECT Park
- Te Puke
- Matakana Island
- Galatea
- Rotoehu

We will consider the forecast for these location when declaring or revoking a fire season.



# Bay of Plenty (BOP) Coastal Zone Map





## Bay of Plenty (BOP) Lakes Forest Zone

**Geography** The borders of the BOP Lakes Forest Zone follow the southern boundary of the BOP Coastal Zone from the Mamaku Plateau eastward to Kawerau then south as far as Broadlands, following the Waikato regional boundary then northwest to Mamaku plateau.

**Demographics** Approximately 72,000 people live within the zone. The settlement is serviced by the principal town of Rotorua, which has long been an iconic tourism destination. With a multi-cultural ethnicity mix throughout the zone, just over 60 percent identified themselves as European with next highest ethnicity being Māori at around 40 percent.

Please refer to the demographics section for the whole area for information on age and ethnicity profiles.

**Climate/weather** Due to the shelter from the high country, the Bay of Plenty's climate is one of the sunniest and least windy in New Zealand. It has high annual rainfall compared to some eastern parts of the country, although rainfall levels vary a lot. Temperatures also vary considerably.

### Land cover/Land use

Land cover	Hectares
<b>Artificial surfaces</b>	
Built-up area (settlement)	4,127
Surface mine or dump	162
Transport infrastructure	414
Urban parkland/open space	753
	<b>5,457</b>
<b>Bare or lightly vegetated surfaces</b>	
Sand or gravel	9
Landslide	5
Alpine grass/herbfield	30
Gravel or rock	249
	<b>293</b>
<b>Water bodies</b>	
Lake or pond	22,227
River	389
	<b>22,616</b>
<b>Croplands</b>	
Short-rotation cropland	1,380
Orchard, vineyard or other perennial crop	162
	<b>1,542</b>
<b>Grassland, sedge and saltmarsh</b>	
High-producing exotic grassland	128,948
Low-producing grassland	1,331
Tall tussock grassland	556
Herbaceous freshwater vegetation	1,476

Flaxland	8		
	<b>132,319</b>		
<b>Scrub and scrubland</b>			
Fernland	323		
Gorse and/or broom	1,849		
Mānuka and/or kānuka	8,459		
Broadleaved indigenous hardwoods	9,383		
Sub-alpine scrubland	87		
Mixed exotic scrubland	405		
Matagouri or grey scrub	4		
	<b>20,509</b>		
<b>Forest</b>			
Deciduous hardwoods	1,757		
Exotic forest	154,436		
Forest - harvested	14,290		
Indigenous forest	46,946		
	<b>217,429</b>		
<b>Other</b>			
Not land	0		
<b>Industry</b>	<b>Contributes to increased risk of fire in high-risk conditions</b>	<b>Affected by use of fire control measures</b>	<b>Needs to be protected by using fire control measures</b>
Primary production, including horticulture and agriculture <ul style="list-style-type: none"> <li>Use of machinery – sparks</li> <li>Relevant operations affected</li> </ul>	<input checked="" type="checkbox"/>	<input checked="" type="checkbox"/>	<input checked="" type="checkbox"/>
Forestry <ul style="list-style-type: none"> <li>Use of machinery – sparks</li> <li>Relevant operations affected</li> <li>Fire crew on standby and firebreaks in place between forestry and</li> </ul>	<input checked="" type="checkbox"/>	<input checked="" type="checkbox"/>	<input checked="" type="checkbox"/>
Tourism <ul style="list-style-type: none"> <li>Restricted entry in certain tourist locations and operations</li> </ul>	<input checked="" type="checkbox"/>	<input checked="" type="checkbox"/>	<input type="checkbox"/>
Major Hazard Facilities (MHF) <ul style="list-style-type: none"> <li>Use of machinery – sparks</li> <li>Relevant operations affected</li> </ul>	<input checked="" type="checkbox"/>	<input checked="" type="checkbox"/>	<input type="checkbox"/>

**Lifeline utility/  
other  
infrastructure**

Fonterra sites <ul style="list-style-type: none"> <li>• Use of machinery – sparks</li> <li>• Relevant operations affected</li> </ul>	<input checked="" type="checkbox"/>	<input checked="" type="checkbox"/>	<input type="checkbox"/>
Major industrial including pulp and paper mill <ul style="list-style-type: none"> <li>• Use of machinery – sparks</li> <li>• Relevant operations affected</li> </ul>	<input checked="" type="checkbox"/>	<input checked="" type="checkbox"/>	<input type="checkbox"/>
Mānuka processing <ul style="list-style-type: none"> <li>• Use of machinery – sparks</li> <li>• Relevant operations affected</li> </ul>	<input checked="" type="checkbox"/>	<input checked="" type="checkbox"/>	<input type="checkbox"/>
Packing houses and cool stores <ul style="list-style-type: none"> <li>• Use of machinery – sparks</li> <li>• Relevant operations affected</li> </ul>	<input checked="" type="checkbox"/>	<input checked="" type="checkbox"/>	<input type="checkbox"/>
<b>Lifeline utility/other infrastructure</b>	<b>Contributes to increased risk of fire in high-risk conditions</b>	<b>Affected by use of fire control measures</b>	<b>Needs to be protected by using fire control measures</b>
Electricity generation – hydro and geothermal <ul style="list-style-type: none"> <li>• Sparking during high winds</li> <li>• Use of auto-reclosers limited in high fire danger</li> <li>• Recommended vegetation mitigation practices</li> </ul>	<input checked="" type="checkbox"/>	<input checked="" type="checkbox"/>	<input checked="" type="checkbox"/>
Electricity – transmission lines <ul style="list-style-type: none"> <li>• Sparking during high winds</li> <li>• Use of auto-reclosers limited in high fire danger</li> <li>• Recommended vegetation mitigation practices</li> </ul>	<input checked="" type="checkbox"/>	<input checked="" type="checkbox"/>	<input checked="" type="checkbox"/>
Communications networks/towers <ul style="list-style-type: none"> <li>• Protect by applying controls to surrounding area</li> </ul>	<input type="checkbox"/>	<input type="checkbox"/>	<input checked="" type="checkbox"/>
Railway corridors <ul style="list-style-type: none"> <li>• Sparks from trains and maintenance equipment</li> <li>• Relevant operations affected</li> <li>• Recommended best practice – water carts wetting rail corridors</li> </ul>	<input checked="" type="checkbox"/>	<input checked="" type="checkbox"/>	<input type="checkbox"/>
Roothing network <ul style="list-style-type: none"> <li>• Sparks from vehicle malfunction, discarded cigarettes</li> <li>• Spark-causing activities during road maintenance and mowing</li> </ul>	<input checked="" type="checkbox"/>	<input checked="" type="checkbox"/>	<input type="checkbox"/>

**Recreational locations**

Recreational location	Contributes to increased risk of fire in high-risk conditions	Affected by use of fire control measures	Needs to be protected by using fire control measures
TECT Park <ul style="list-style-type: none"> <li>• Spark-causing activities – motorised sports, shooting</li> <li>• Motorised activities stop in high fire danger.</li> <li>• Recommend adjusting operations to suit conditions.</li> </ul>	<input checked="" type="checkbox"/>	<input checked="" type="checkbox"/>	<input type="checkbox"/>
Redwoods Forest <ul style="list-style-type: none"> <li>• Campfires and cigarettes</li> <li>• Restrictions on access</li> </ul>	<input checked="" type="checkbox"/>	<input checked="" type="checkbox"/>	<input checked="" type="checkbox"/>
Mountain biking areas <ul style="list-style-type: none"> <li>• Campfires and cigarettes</li> <li>• Closure of facilities</li> </ul>	<input checked="" type="checkbox"/>	<input checked="" type="checkbox"/>	<input type="checkbox"/>
Water activities <ul style="list-style-type: none"> <li>• Closure of some water recreational areas for firefighting purposes, i.e., heli-dipping</li> </ul>	<input type="checkbox"/>	<input checked="" type="checkbox"/>	<input type="checkbox"/>
Freedom camping <ul style="list-style-type: none"> <li>• Campfires</li> </ul>	<input checked="" type="checkbox"/>	<input checked="" type="checkbox"/>	<input type="checkbox"/>

**Cultural and recreational activities and events**

Tangata whenua have very strong ties to their whenua (land) and culture, and value being able to use their whenua without unnecessary restrictions.

We will consult with tangata whenua and consider the needs of iwi when making decisions about implementing restrictions or prohibitions with our fire control powers. The relevant iwi for this zone are listed as stakeholders.

Large-scale events that might be cancelled because a restriction on activities can have a significant economic impact.

Restrictions or prohibitions on fire hazardous activities should not impose any unreasonable restrictions on people living and enjoying recreational activities in this zone.

Cultural or recreational activity or event	Contributes to increased risk of fire in high-risk conditions	Affected by use of fire control measures	Needs to be protected by using fire control measures
Numerous marae throughout the zone <ul style="list-style-type: none"> <li>• Cultural cooking fires, e.g. hāngī</li> </ul>	<input checked="" type="checkbox"/>	<input checked="" type="checkbox"/>	<input type="checkbox"/>

	<p>Concerts and festivals and other events such as Diwali and Matariki</p> <ul style="list-style-type: none"> <li>• Fireworks</li> <li>• Fire seasons and other controls may affect some parts of the events</li> </ul>	<input checked="" type="checkbox"/>	<input checked="" type="checkbox"/>	<input type="checkbox"/>
	<p>Large sporting events and multi-sports events</p> <ul style="list-style-type: none"> <li>• Access to some sites may be restricted in high fire danger.</li> </ul>	<input type="checkbox"/>	<input checked="" type="checkbox"/>	<input type="checkbox"/>
	<p>Motorsports</p> <ul style="list-style-type: none"> <li>• Car fire and sparks</li> <li>• Closure of facilities due to high fire risk</li> </ul>	<input checked="" type="checkbox"/>	<input checked="" type="checkbox"/>	<input type="checkbox"/>
<b>Special risk areas</b>	<b>Special risk area</b>	<b>Contributes to increased risk of fire in high-risk conditions</b>	<b>Affected by use of fire control measures</b>	<b>Needs to be protected by using fire control measures</b>
	<p>Whakarewarewa State Forest Park</p> <ul style="list-style-type: none"> <li>• Campfires and cigarettes</li> <li>• Closure of facilities</li> </ul>	<input checked="" type="checkbox"/>	<input checked="" type="checkbox"/>	<input type="checkbox"/>
	<p>Kaingaroa Forest</p> <ul style="list-style-type: none"> <li>• Machinery – sparks</li> <li>• Relevant operations affected</li> <li>• Changes in operational procedures to mitigate risk</li> <li>• Fire crews put on standby and fire breaks in place between forestry areas and urban interface</li> </ul>	<input checked="" type="checkbox"/>	<input checked="" type="checkbox"/>	<input checked="" type="checkbox"/>
	<p>Archaeological and culturally sensitive sites (wāhi tapu)</p> <ul style="list-style-type: none"> <li>• Access may be restricted</li> </ul>	<input type="checkbox"/>	<input checked="" type="checkbox"/>	<input checked="" type="checkbox"/>
	<p>Non-DOC conservation areas</p> <ul style="list-style-type: none"> <li>• Ecologically significant</li> <li>• Consider fire breaks and fuel reduction practices.</li> </ul>	<input type="checkbox"/>	<input checked="" type="checkbox"/>	<input checked="" type="checkbox"/>
	<p>DOC areas of significance including public conservation land (PCL)</p> <ul style="list-style-type: none"> <li>• Significant fuel loadings</li> <li>• Consider fire breaks and fuel reduction practices</li> <li>• Year-round restricted fire season in place</li> </ul>	<input checked="" type="checkbox"/>	<input checked="" type="checkbox"/>	<input checked="" type="checkbox"/>
	<p>Beaches and lakeside areas</p> <ul style="list-style-type: none"> <li>• Campfires</li> </ul>	<input checked="" type="checkbox"/>	<input checked="" type="checkbox"/>	<input checked="" type="checkbox"/>

• Ecologically significant			
----------------------------	--	--	--

**Known fire hazards**

There are no long-term fire hazards listed for this zone in the Fire Hazard Removal Case Management System.

**High-risk communities**

These are communities that are at high risk in the event of a wildfire. These communities may be surrounded by high fuel loadings that are especially vulnerable to fire spread and/or have limited access into or out of the community.

**Lake Forest Zone high-risk communities**

- Kaingaroa
- Lake Tarawera
- Okere Falls

**Frequency of elevated fire danger**

On average, this zone experiences

- 2.5 days a year at Very High on Forest fuel
- 1.1 days a year at Extreme on Forest fuels

(Based on Scion fire danger climate data for seasonal severity).

**Fire history**

Fires in last five years over five hectares in size:

Year	Fire	Cause
2019	Reporoa	Burn-off
2022	Matahina Forest	Incendiaries/suspicious
2022	Ātiamuri	Burn-off

**Predominant fuel type**

The predominant fuel types in this zone are production forest and grass land as well as areas of scrub

## Thresholds

### Fire seasons

Build-up Index (BUI) and the degree of grass curing (GC%) are the most relevant fire weather indices to monitor where there is a mixture of forestry and grasslands as the predominant fuel types.

#### Please note:

**There has been a change in threshold triggers from the previous Fire Plan 2021-2024. As result from consultation, it has been agreed that the trigger for the BUI level be changed from Open to Open/Restricted at 0 - 50% Grass Curing, Restricted at 50-80% Grass Curing, and Prohibited at >80% Grass curing, be lowered from BUI 40 to BUI 35. This is based on better fire control measures in this zone, due to greater fire fuel availability at BUI 35 based on fuel types available and the difficulty to bring fire at greater than 35 BUI under control.**

#### Local table.

Grass Curing (GC%) (%)	Build Up Index (BUI)		
	0–35	35–60	> 60
0–50	Open	Open/Restricted	Restricted/ Prohibited
50–80	Open/Restricted	Restricted	Prohibited
> 80	Restricted/ Prohibited	Prohibited	Prohibited

#### Interpreting this matrix:

Open	Open fire season
Open/Restricted	Open fire season, but we may move to a restricted season earlier if forecast conditions support this.
Restricted	Restricted fire season
Restricted/prohibited	Restricted fire season, but we may move to a prohibited season earlier if forecast conditions support this, or stay in a prohibited season longer if grasses remain dry and cured.
Prohibited	Prohibited fire season

### Prohibition on fires in open air (section 52)

We can use the same Fire Weather System trigger thresholds for prohibiting fires in the open air under section 52 as we do for changing to a prohibited fire season, but use section 52 when the fire risk conditions are not expected to last long enough to make changing to a prohibited fire season practical.

Other local thresholds have not been set.

### Prohibitions or restrictions on activities (section 52)

Localised trigger thresholds for applying section 52 to activities have not yet been developed. However, there are some local mitigations used to reduce the need to implement it.

Advice is available through Checkitsalright.nz for when to avoid certain activities that may be of risk for causing a wildfire. Noting these are voluntary restrictions, it is envisaged the majority of public will follow this. Where there is an elevated risk or public are not following this advice, imposing prohibitions or restrictions on activities is a tool available to us.

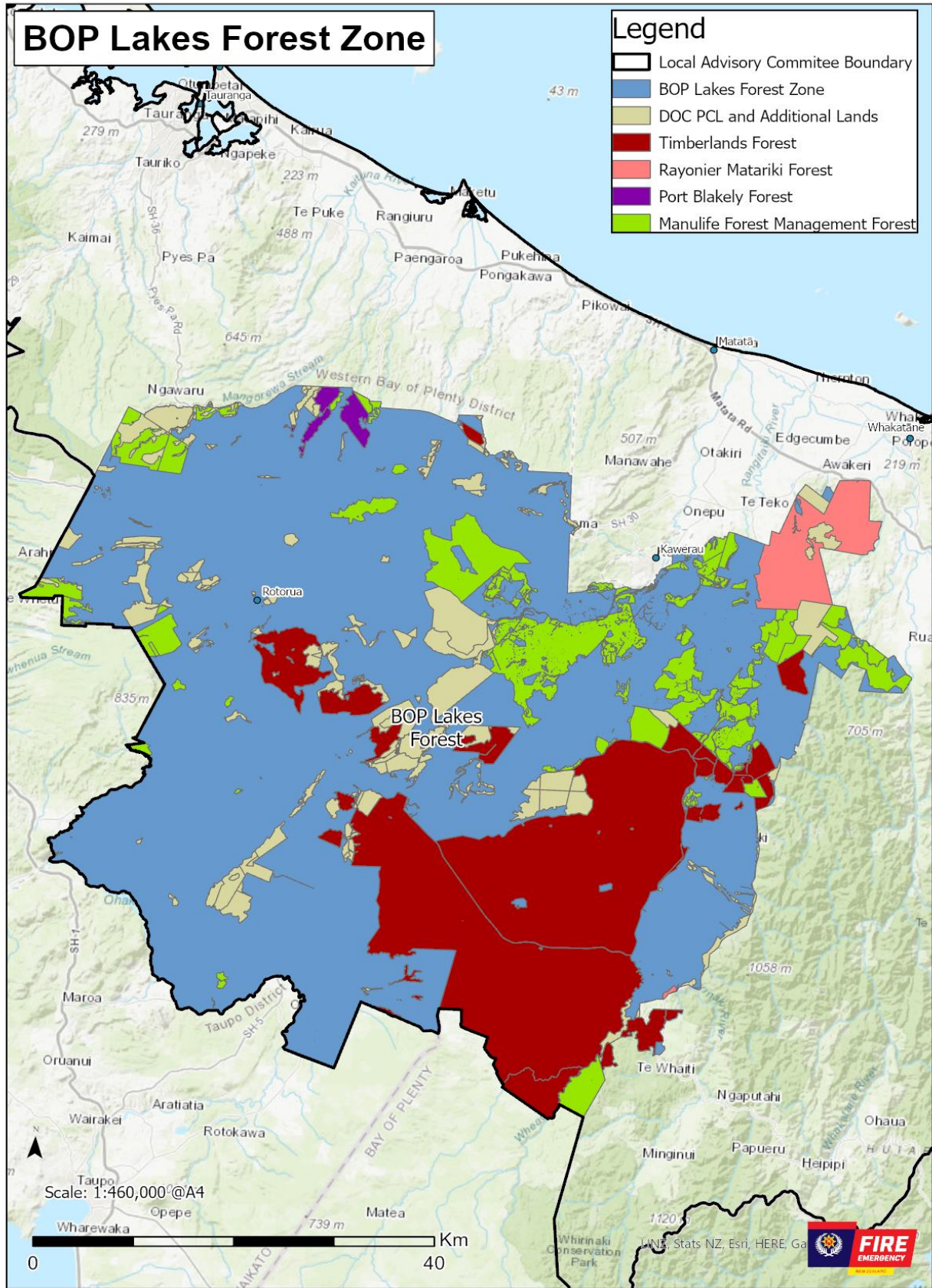
**Representative  
remote  
automated  
weather  
stations**

The Remote Automated Weather Station (RAWS) used to determine whether we have reached the trigger thresholds are:

- Kawerau
- Rotorua
- Matea
- Minden
- Minginui
- Galatea
- Goudies
- TECT All Terrain Park
- Athol



### Bay of Plenty (BOP) Lakes Forest Zone map



## Bay of Plenty (BOP) Hinterland Zone

**Geography** This zone is based around Te Urewera and Raukūmara Conservation Park, which is Department of Conservation (DOC)-administered public conservation land (PCL), and Whirinaki Te Pua-a-Tāne Conservation Park. The zone includes all inland lands within Whakatāne District Council and Ōpōtiki District Council and includes relatively small areas of commercial forest around Minginui, southern Kaingaroa and Waioeka Gorge.

**Demographics** Due to the zone being predominantly a conservation area, it is extremely sparsely populated. Please refer to the demographics section for the whole area for information on age and ethnicity profiles.

**Climate/ weather** The Hinterland Zone comprises of rugged mountain ranges of dense to broken bush. The ridgelines are exposed to high winds, rain and even winter snow. The deep valleys are more protected and can get hot in summer with [katabatic](#) and [anabatic](#) winds being extreme during hotter weather.

### Land cover/land use

Land cover	Hectares
<b>Artificial surfaces</b>	
Built-up area (settlement)	23
Transport infrastructure	15
	<b>38</b>
<b>Bare or lightly vegetated surfaces</b>	
Landslide	123
Gravel or rock	526
	<b>649</b>
<b>Water bodies</b>	
Lake or pond	1
River	522
	<b>523</b>
<b>Grassland, sedge and saltmarsh</b>	
High-producing exotic grassland	6,340
Low-producing grassland	1,016
Tall tussock grassland	62
Herbaceous freshwater vegetation	60
	<b>7,479</b>
<b>Scrub and scrubland</b>	
Fernland	579
Gorse and/or broom	59
Mānuka and/or kānuka	6,300
Broadleaved indigenous hardwoods	13,081
Sub-alpine scrubland	279

	Mixed exotic scrubland	128		
	Matagouri or grey scrub	4		
		<b>20,430</b>		
	<b>Forest</b>			
	Deciduous hardwoods	82		
	Exotic forest	7,851		
	Forest – harvested	300		
	Indigenous forest	343,201		
		<b>351,434</b>		
<b>Industry</b>	<b>Industry</b>	<b>Contributes to increased risk of fire in high risk conditions</b>	<b>Affected by use of fire control measures</b>	<b>Needs to be protected by using fire control measures</b>
	Primary production, including horticulture and agriculture	<input checked="" type="checkbox"/>	<input checked="" type="checkbox"/>	<input checked="" type="checkbox"/>
	<ul style="list-style-type: none"> <li>Use of machinery – sparks</li> <li>Relevant operations affected</li> </ul>			
	Forestry	<input checked="" type="checkbox"/>	<input checked="" type="checkbox"/>	<input checked="" type="checkbox"/>
	<ul style="list-style-type: none"> <li>Use of machinery – sparks</li> <li>Relevant operations affected</li> <li>Fire crew on standby and firebreaks in place between forestry and grasslands</li> </ul>			
	Tourism	<input type="checkbox"/>	<input checked="" type="checkbox"/>	<input type="checkbox"/>
	<ul style="list-style-type: none"> <li>Restricted entry in certain tourist locations and operations</li> </ul>			
<b>Lifeline utilities/other infrastructure</b>	<b>Lifeline utility/other infrastructure</b>	<b>Contributes to increased risk of fire in high risk conditions</b>	<b>Affected by use of fire control measures</b>	<b>Needs to be protected by using fire control measures</b>
	Electricity generation – hydro	<input checked="" type="checkbox"/>	<input checked="" type="checkbox"/>	<input checked="" type="checkbox"/>
	<ul style="list-style-type: none"> <li>Sparking during high winds</li> <li>Use of auto-reclosers limited in high fire danger</li> <li>Recommended vegetation mitigation practices</li> </ul>			
	Electricity – transmission lines	<input checked="" type="checkbox"/>	<input checked="" type="checkbox"/>	<input checked="" type="checkbox"/>
	<ul style="list-style-type: none"> <li>Sparking during high winds</li> <li>Use of auto-reclosers limited in high fire danger</li> <li>Recommended vegetation mitigation practices</li> </ul>			

**Recreational locations**

Communications networks/towers <ul style="list-style-type: none"> <li>Protect by applying controls to surrounding areas</li> </ul>	<input type="checkbox"/>	<input type="checkbox"/>	<input checked="" type="checkbox"/>
Roothing network <ul style="list-style-type: none"> <li>Sparks from vehicle malfunction, discarded cigarettes</li> <li>Spark-causing activities during road maintenance and mowing</li> </ul>	<input checked="" type="checkbox"/>	<input checked="" type="checkbox"/>	<input type="checkbox"/>
Recreational location	Contributes to increased risk of fire in high-risk conditions	Affected by use of fire control measures	Needs to be protected by using fire control measures
Mountain biking areas <ul style="list-style-type: none"> <li>Campfires and cigarettes</li> <li>Closure of facilities</li> <li>May access through remote areas</li> </ul>	<input checked="" type="checkbox"/>	<input checked="" type="checkbox"/>	<input type="checkbox"/>
Water activities <ul style="list-style-type: none"> <li>Closure of some water recreational areas for firefighting purposes. i.e. heli-dipping</li> </ul>	<input type="checkbox"/>	<input checked="" type="checkbox"/>	<input type="checkbox"/>
Freedom camping <ul style="list-style-type: none"> <li>Campfires</li> </ul>	<input checked="" type="checkbox"/>	<input checked="" type="checkbox"/>	<input type="checkbox"/>

**Cultural and recreational activities and events**

Tangata whenua have very strong ties to their whenua (land) and culture, and value being able to use their whenua without unnecessary restrictions.

We will consult with tangata whenua and consider the needs of iwi when making decisions about implementing restrictions or prohibitions with our fire control powers. The relevant iwi for this zone are listed as stakeholders.

Large-scale events that might be cancelled because a restriction on activities can have a significant economic impact.

Restrictions or prohibitions on fire hazardous activities should not impose any unreasonable restrictions on people living and enjoying recreational activities in this zone.

Cultural or recreational activity or event	Contributes to increased risk of fire in high-risk conditions	Affected by use of fire control measures	Needs to be protected by using fire control measures
<ul style="list-style-type: none"> <li>Numerous marae throughout the zone</li> <li>Cultural cooking fires, e.g. hāngī</li> </ul>	<input checked="" type="checkbox"/>	<input checked="" type="checkbox"/>	<input type="checkbox"/>
Events such as Diwali and Matariki <ul style="list-style-type: none"> <li>Fireworks</li> <li>Fire seasons and other controls may affect some parts of the events</li> </ul>	<input checked="" type="checkbox"/>	<input checked="" type="checkbox"/>	<input type="checkbox"/>

Motorsports <ul style="list-style-type: none"> <li>Car fire and sparks</li> <li>Closure of facilities due to high fire risk</li> </ul>	<input checked="" type="checkbox"/>	<input checked="" type="checkbox"/>	<input type="checkbox"/>
Hunting <ul style="list-style-type: none"> <li>Fires</li> <li>Closure of hunting sites</li> </ul>	<input checked="" type="checkbox"/>	<input checked="" type="checkbox"/>	<input type="checkbox"/>

**Special risk areas**

Special risk area	Contributes to increased risk of fire in high risk conditions	Affected by use of fire control measures	Needs to be protected by using fire control measures
Archaeological and culturally sensitive sites (wāhi tapu) <ul style="list-style-type: none"> <li>Access may be restricted</li> </ul>	<input type="checkbox"/>	<input checked="" type="checkbox"/>	<input checked="" type="checkbox"/>
Non-DOC conservation areas <ul style="list-style-type: none"> <li>Ecologically significant</li> <li>Consider fire breaks and fuel reduction practices.</li> </ul>	<input type="checkbox"/>	<input checked="" type="checkbox"/>	<input checked="" type="checkbox"/>
DOC areas of significance including public conservation land (PCL) <ul style="list-style-type: none"> <li>Significant fuel loadings</li> <li>Consider fire breaks and fuel reduction practices.</li> <li>Year-round restricted fire season in place</li> </ul>	<input checked="" type="checkbox"/>	<input checked="" type="checkbox"/>	<input checked="" type="checkbox"/>

**Known fire hazards**

There are no long-term fire hazards listed for this zone in the Fire Hazard Removal Case Management System.

**High-risk communities**

These are communities that are at high risk in the event of a wildfire. These communities may be surrounded by high fuel loadings that are especially vulnerable to fire spread and/or have limited access into or out of the community.

**Bay of Plenty Hinterland Zone high-risk communities**

- Minginui
- Ruatāhuna

**Frequency of elevated fire danger**

On average, this area experiences

- 1.2 days a year at Very High on Forest fuel
- 0.3 days a year at Extreme on Forest fuels

(Based on Scion fire danger climate data for seasonal severity)

**Fire history**

Fires in last five years over five hectares in size:

Year	Fire	Cause
2019	Whakatāne	Suspicious
2019	Urewera National Park	Suspicious
2020	Waipunga	Other not listed

2022	Matahi	Suspicious	
2022	Urewera National Park	Suspicious	

**Predominant fuel type** The predominant fuel type in this zone is scrub and native forest.

**Thresholds**

**Fire seasons**

Build-up Index (BUI) and the degree of grass curing (GC%) are the most relevant fire weather indices to monitor where there is a mixture of forestry and grasslands as the predominant fuel types.

**Please note:**

**There has been a change in threshold triggers from the previous Fire Plan 2021-2024. As result from consultation, is has been agreed that the trigger for the BUI level be changed from Open to Open/Restricted at 0 - 50% Grass Curing, Restricted at 50-80% Grass Curing, and Prohibited at >80% Grass curing, be lowered from BUI 40 to BUI 35. This is based on better fire control measures in this zone, due to greater fire fuel availability at BUI 35 based on fuel types available and the difficulty to bring fire at greater than 35 BUI under control.**

**Local table>**

Grass Curing (GC%)	Build Up Index (BUI)			
	(%)	0-35	35-60	>60
0-50		Open	Open/Restricted	Restricted/Prohibited
50-80		Open/Restricted	Restricted	Prohibited
>80		Restricted/Prohibited	Prohibited	Prohibited

**Interpreting this matrix:**

Open	Open fire season
Open/Restricted	Open fire season but we may move to a restricted season earlier if forecast conditions support this.
Restricted	Restricted fire season
Restricted/prohibited	Restricted Fire Season but we may move to a prohibited season earlier if forecast conditions support this or stay in a prohibited season longer if grasses remain dry and cured.
Prohibited	Prohibited fire season

**Prohibitions on fires in open air (section 52)**

In addition to the above trigger thresholds for changing fire seasons, there will be days where we consider that fire danger conditions are very high or extreme.

We will use forecast data including elevated temperatures, strong winds, low humidity, Fine Fuels Moisture Code (FFMC) to predict these events.

We will communicate this to communities and stakeholders as per the stakeholder plan.



**Prohibitions or restrictions on activities (section 52)**

In addition to the above trigger thresholds for changing fire seasons, there will be days where we consider that fire danger conditions are very high or extreme.

We will use forecast data including elevated temperatures, strong winds, low humidity, Fine Fuels Moisture Code (FFMC) to predict these events.

We may prohibit activities on these days which have the potential to produce sparks, farming operations such as land clearing and discing, grinding/welding, roadside mowing, steam and traction operations, forestry operations and automatic reset on power lines.

We will communicate this to communities and stakeholders as per the stakeholder plan.

Some forest operations may continue work during elevated fire danger. A Build-up Index trigger may be considered if the forest companies will mitigate the risk by having set numbers of firefighters, heavy machinery and helicopters on standby. This may include patrolling work sites for an hour after operations cease. Parking heavy machinery on clear skid sites, blocks and working ropes are checked before leaving (Skyline Hauler Operations).

**Representative Remote Automated Weather Station**

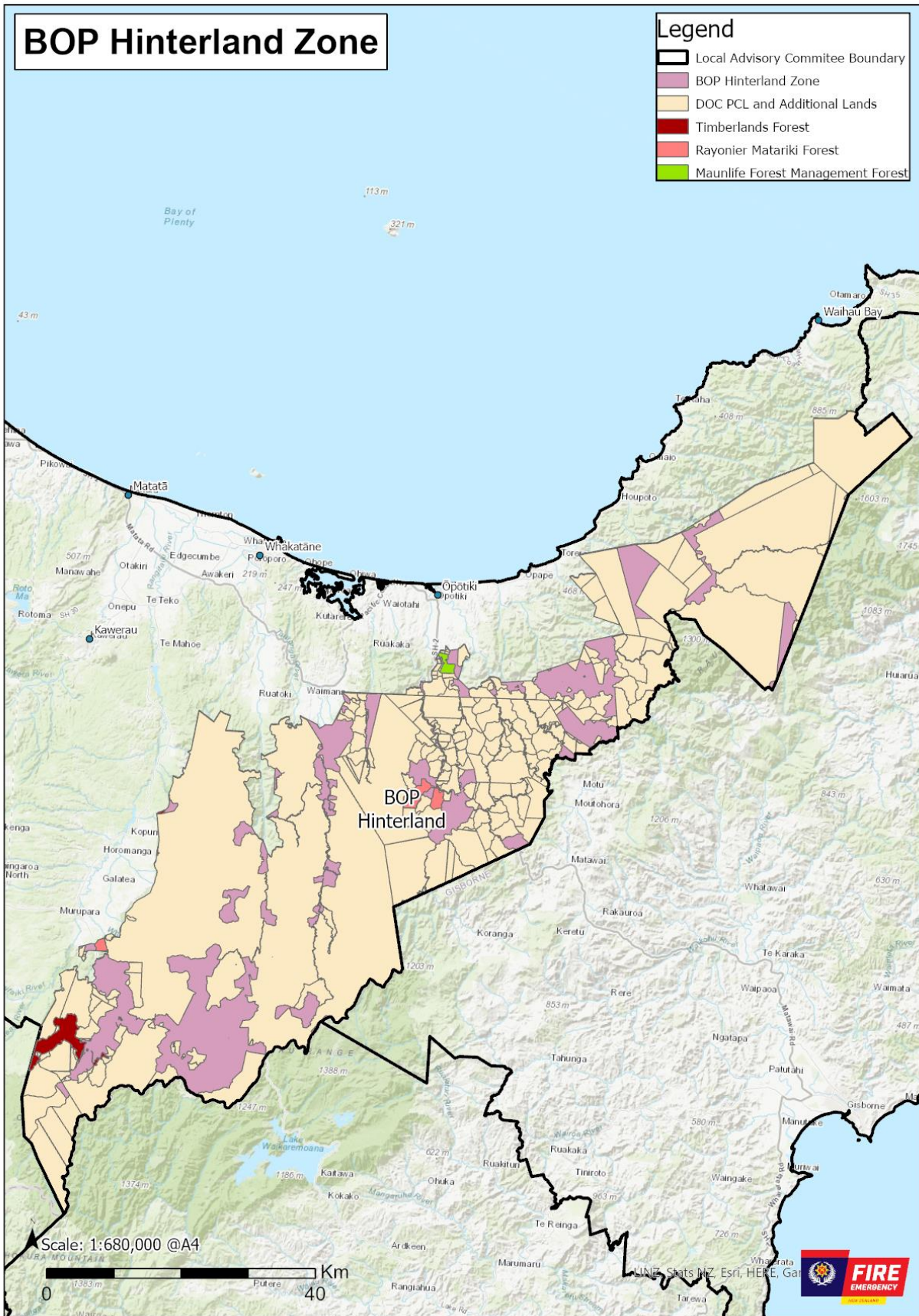
The Remote Automated Weather Stations (RAWS) used to determine whether we have reached the trigger thresholds are set out below.

Considerations are given to an average reading across all six weather stations as all trend consistently across the zone.

We will consider the forecast for these locations when declaring or revoking a fire season.

- Mātāwai
- Wharekōpae
- Raparapariki
- Ruatāhuna
- Minginui
- Maungaroa

# Bay of Plenty (BOP) Hinterland Zone Map





## Public Conservation Land and Additional Lands

### Geography

This zone includes conservation areas such as:

- Kaimai/Mamaku Forest Park
- Horohoro Range
- Mount Tarawera
- Whakarewarewa Forest Park
- Raukūmara Conservation Park
- Whirinaki Te Pua-a-Tāne Conservation Park
- Moutohora (Whale) Island Wildlife Management Reserve
- Lands managed by Ngā Whenua Rāhui

### Climate/weather

Due to the varied mountain range locations, and coastal versus inland, climatic conditions vary dramatically.

Off-shore island vegetation types are prone to early curing.

### Land cover

Secondary growth native forest over the Mamaku and Kaimai Forest Park, with old-growth native.

Horohoro Range consists of virgin native bush with boundaries covered in exotics.

Mount Tarawera is covered in low-lying scrub around the tops if any at all. Lower slopes are covered with scrub and exotics.

Coastal areas are predominantly kānuka and mānuka mix with pōhutukawa forests.

There are a number of offshore and inshore islands that are administered by DOC. These have significant cultural and ecological values.

### Special risk areas

	Contributes to increased risk of fire in high risk conditions	Affected by use of fire control measures	Needs to be protected by using fire control measures
<p><del>Whakarewarewa Forest Park</del></p> <ul style="list-style-type: none"> <li>• Campfires and cigarettes</li> <li>• Closure of facilities</li> </ul>	☒	☒	☒
<p>Waimangu Valley</p> <ul style="list-style-type: none"> <li>• Campfires and cigarettes</li> <li>• Closure of facilities</li> </ul>	☒	☒	☒
<p>Moutohora (Whale) Island Wildlife Management Reserve</p> <ul style="list-style-type: none"> <li>• Staff activities</li> <li>• Concessioned visitors</li> <li>• Flares and fireworks</li> </ul>	☒	☒	☒

Due to the values at risk, public conservation lands are kept in a restricted fire season when they are not in a prohibited fire season.

### Known fire hazards

There are no long-term fire hazards listed in the Fire Hazard Removal Case Management System.

---

<b>Fire history</b>	No recent fires over five hectares in the public conservation lands zone.
---------------------	---

---

## Thresholds

### **Restricted seasons year-round**

Due to the values at risk, public conservation lands are kept in a restricted fire season when they are not in a prohibited fire season. Even when the surrounding zone goes to an open fire season, public conservation land will remain in a restricted fire season.

Thresholds for declaring or revoking a prohibited fire season are the same as the thresholds for the surrounding zone.

When considering whether to declare a restricted or prohibited fire season over areas that are public conservation land or additional land, Fire and Emergency will have regard to:

- conservation values
- public values
- accessibility
- fire risk conditions

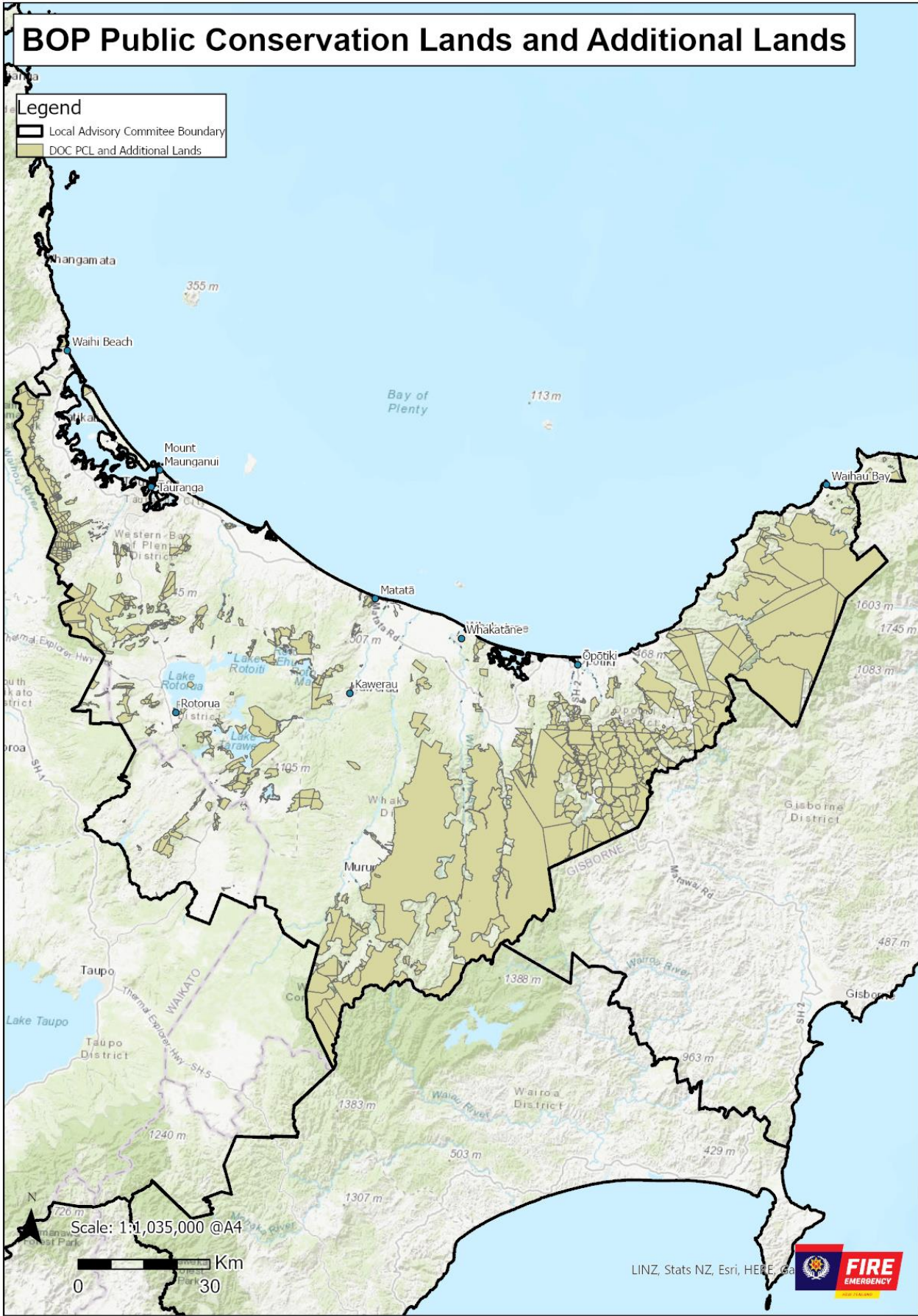
Department of Conservation has an Operational Services Agreement with Fire and Emergency that allows for mutual understanding over fire risk reduction strategies.

### **Notification of fires on PCL and additional Lands**

Fire and Emergency will as soon as practically possible, notify the Department of Conservation of all fires occurring on public conservation land and additional land, using the procedures for notifying the Department set out in Fire and Emergency's Communications Centre SOP.

---

Public conservation land and additional lands map



## Forestry zone

### Geography

This zone includes forestry areas covered by Forestry Management Organisation (FMO) Agreements with Fire and Emergency New Zealand:

- Rayonier Matariki Forests.
- Timberlands.
- Manulife Forest Management (Pending Agreement Finalisation)
- NZ Forest Managers (Pending Agreement Finalisation)
- Port Blakely
- Aratu Forests.

### Climate/weather

Due to the varied mountain range locations, and coastal versus inland, climatic conditions vary dramatically.

Off-shore island vegetation types are prone to early curing.

### Land cover

Forestry areas include a variety of plantation species, including pine, eucalyptus, and cedars. These range in age classes and are planted on a multi-rotational land usage.

Most plantation forests include understory vegetation types, that can include grasses and scrub species.

### Special risk areas

Due to the values at risk, forest zone lands are kept in a restricted fire season when they are not in a prohibited fire season.

Forestry Companies have plans and procedures to manage their activities and mitigate the risk of a fire developing and/or spreading.

This plan supports this approach by limiting the activities of others within the forestry land included in this zone.

### Known fire hazards

There are no long-term fire hazards listed in the Fire Hazard Removal Case Management System.

### Fire history

2020	Matakana Island	Cooking/warming
2022	Matakana Island	Burn-off
2023	Matakana Island	Suspicious

## Thresholds

### Restricted seasons year-round

Due to the values at risk, agreed forestry lands are kept in a restricted fire season when they are not in a prohibited fire season. Even when the surrounding zone goes to an open fire season, forestry land included in this zone will remain in a restricted fire season.

Thresholds for declaring or revoking a prohibited fire season are the same as the thresholds for the surrounding zone.

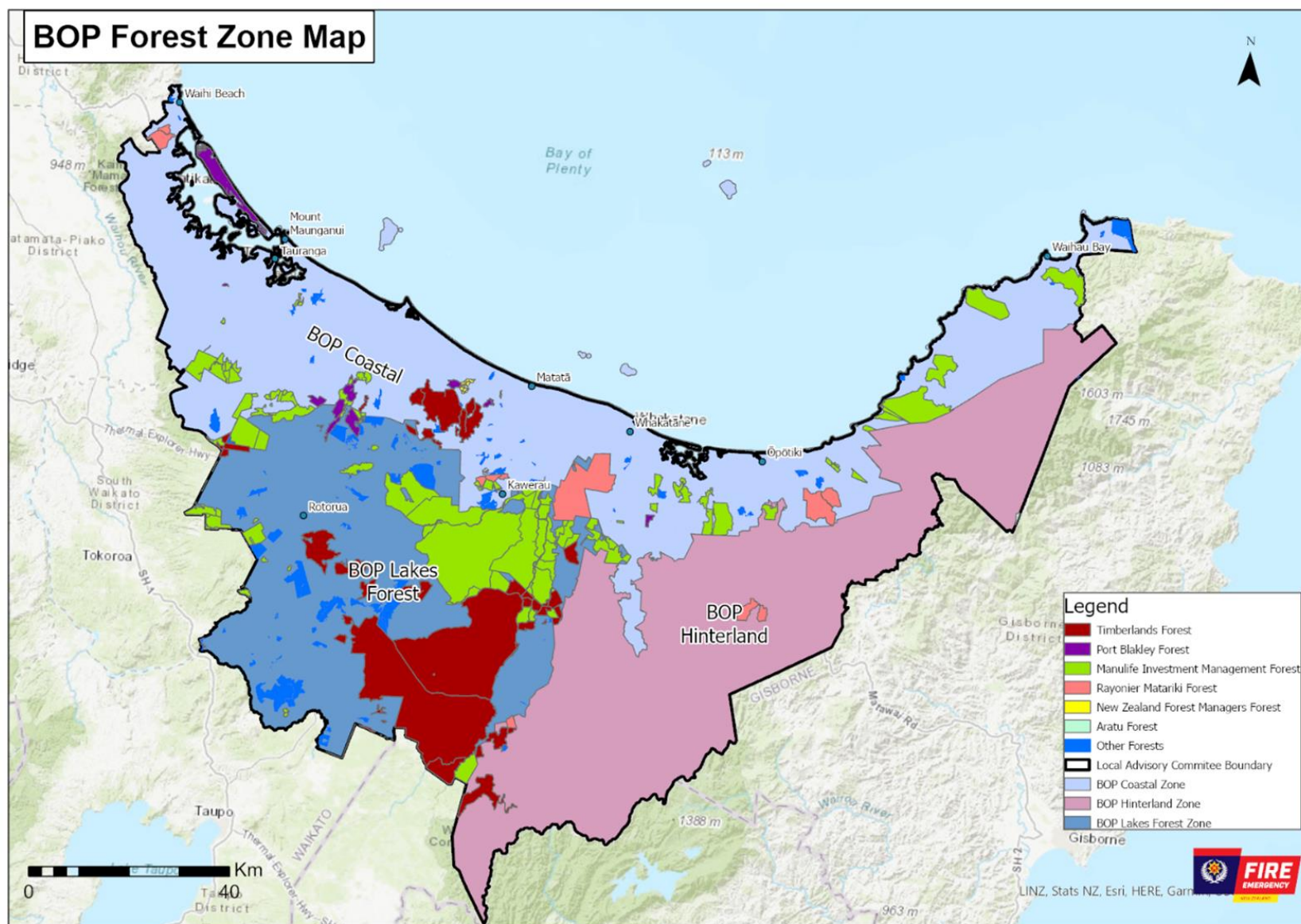
Forestry Management included in this zone has a Forestry Management Organisation Agreement with Fire and Emergency that allows for mutual understanding over fire risk reduction strategies.

### Notification of fires on PCL and additional Lands

Fire and Emergency will as soon as practically possible, notify the Forestry Managers of all fires occurring on forestry land, using the procedures for notifying set out in Fire and Emergency's Communications Centre SOP.




## Forestry Zone map



## Appendix A- Plantation forestry rural fire control charter





### PLANTATION FORESTRY RURAL FIRE CONTROL CHARTER

**August 2017**

Fire and Emergency New Zealand was established on 1 July 2017 with the principal objectives to reduce unwanted fires; and in relation to its main and additional functions to protect and preserve life, prevent or limit injury, and prevent or limit damage to property, land and the environment.

This is the first time New Zealand has a single, unified fire services organisation that combines urban and rural fire services, with expanded functions that reflect the range of services firefighters provide to communities. Fire and Emergency New Zealand is committed to working co-operatively and collaboratively with other organisations to achieve these objectives.

The plantation forestry sector (the sector) covers over 1.7 million hectares of land in New Zealand. The NZ Forest Owners Association (NZFOA) and the NZ Farm Forestry Association (NZFFA) are voluntary membership organisations that provide leadership, support and services to the sector.

It is acknowledged that there will be a long transition period before Fire and Emergency New Zealand functions as a fully unified, national organisation. This Charter provides clarity during this transition. The sector and Fire and Emergency New Zealand are committed to working together to maintain, and enhance the existing arrangements used to deliver effective rural fire control. The parties will review this Charter at least three yearly.

Both Fire and Emergency New Zealand and the sector, as represented by the signatories of this Charter, will work together to:

- develop and promote principles and actions with our members and personnel to improve fire management, and to support Fire and Emergency New Zealand over the coming years.
- communicate the contents of this Charter to our respective members and personnel.

NZFOA and NZFFA will also recommend to their members that they adopt those elements that can only be acted on by individual forest owners, rather than by the signatory Associations.

We will also be guided by the following statements: -

<ul style="list-style-type: none"> <li>• Fire and Emergency New Zealand and the sector each have duties under health and safety legislation, and will co-operate with each other where they have a duty in relation to the same matter, to promote a safety-first culture within their organisations.</li> <li>• The sector will make representations to, and seek support from, Fire and Emergency New Zealand at national, regional and local level.</li> <li>• Fire and Emergency New Zealand and the sector acknowledge the role of fire as a land management tool.</li> <li>• The sector is committed to investing at appropriate levels, in people, equipment and specialist knowledge, to support Fire and Emergency New Zealand in its objectives and fire control functions.</li> <li>• Fire and Emergency New Zealand and the sector are committed to reducing the incidence and economic consequence of wildfires, through efficient and effective fire control measures and national, regional and local risk planning.</li> </ul>	<ul style="list-style-type: none"> <li>• Fire and Emergency New Zealand and the sector support the philosophy of managing wildfires by fire risk reduction, and early and controlled response.</li> <li>• Fire and Emergency New Zealand and the sector support fire research including that of the SCION Fire Research Program and the utilisation or adoption of this research.</li> <li>• Fire and Emergency New Zealand and the sector support the NZFOA Fire Management Guidelines which provide operational guidance and information to promote and ensure efficient and effective fire management, including protection, on plantation forests.</li> <li>• The sector will be engaged and consulted on the development of national standards and forestry related fire management policies.</li> <li>• Fire and Emergency New Zealand will engage with the sector on the development and publication of forestry fire related materials, distribution of fire control information, and the promotion of good fire management practices.</li> </ul>
--	---

#### SIGNATORIES

		
Rhys Jones, Chief Executive Fire and Emergency New Zealand	David Rhodes, Chief Executive New Zealand Forest Owners Association	Neil Cullen, President New Zealand Farm Forestry Association